

11.8.91.

N. 201. S. P. Rinner
Brow Rpt. N. 201. S. P.

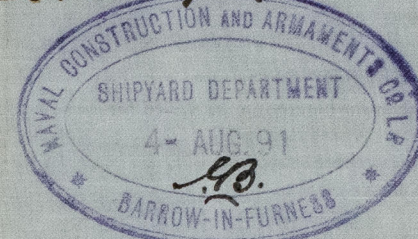
Brow 4/8/91
J.B.

Steel T.S.S. N° 201 - 211 x 212

21.11.91.

Midship Section

Scale $\frac{1}{4}$ inch = 1 foot



Principal Dimensions

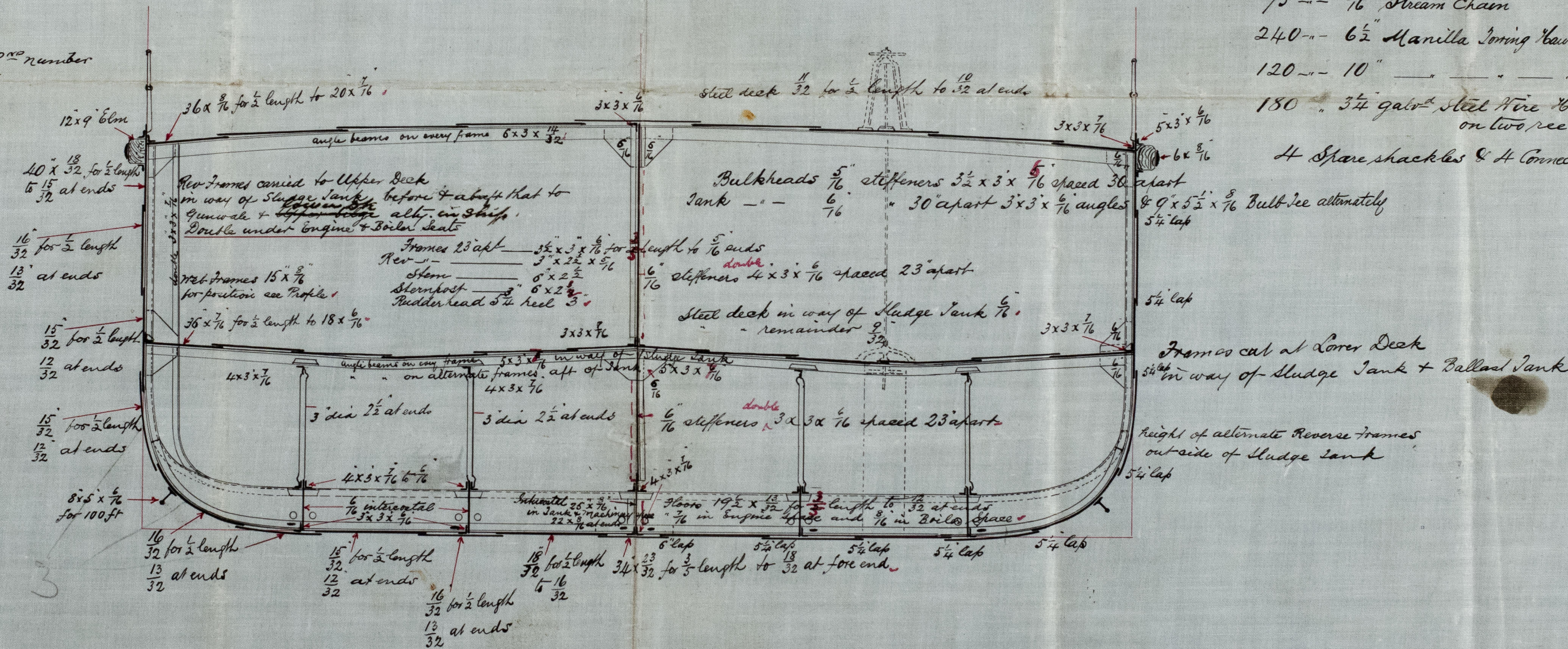
Length B. P. 232' - 0"
Breadth Moulded 38' - 0"
Depth 14' - 6"
" of hold to top of floors 13' - 10"

To class 100 A at Lloyds

Lloyds Numerals	
$\frac{1}{2}$ girth	31.66
$\frac{1}{2}$ breadth	19.00
Depth	15.40
	66.06
	231
	66.06
	1981.8
	13212
	1525986
	2 nd number

Equipment

2 Borer Anchors 16 cwt each (Stockless pattern)
1 Sheet 18"
1 Hedge 32"
240 fms $1\frac{1}{4}$ " cable
75 -- $\frac{1}{16}$ " Stream Chain
240 -- 62" Manila Loring Hauler (water laid)
120 -- 10"
180 -- $3\frac{1}{4}$ " galv. Steel Wire Hauler on two reels
4 Spare shackles & 4 Connecting shackles



J.B.
21/11/91

J. L.
11/8/91