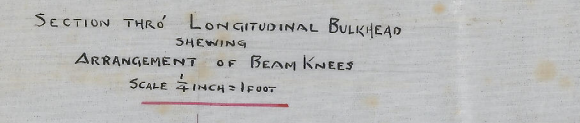
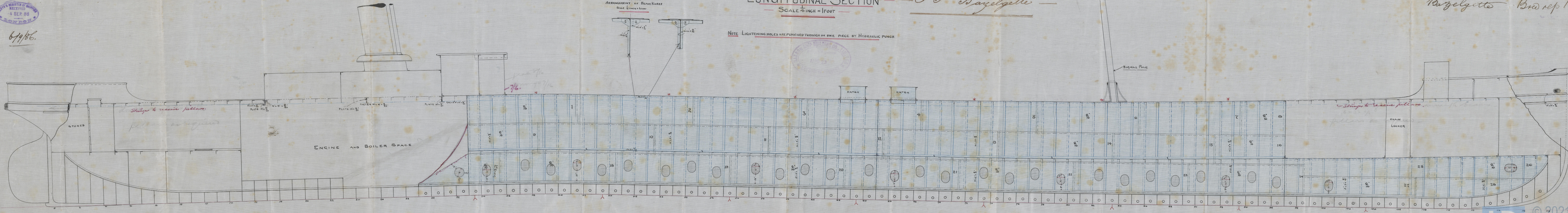


LLOYD'S REGISTER OF SHIPPERS  
RECEIVED  
4 SEP 86  
LONDON

6/9/86.



T.S.S. N<sup>o</sup> 152  
LONGITUDINAL SECTION  
SCALE 1/4 INCH = 1 FOOT  
S.S. 'Bazelgette'

NOTE LIGHTENING HOLES ARE PUNCHED THROUGH IN ONE PIECE BY HYDRAULIC PUNCH

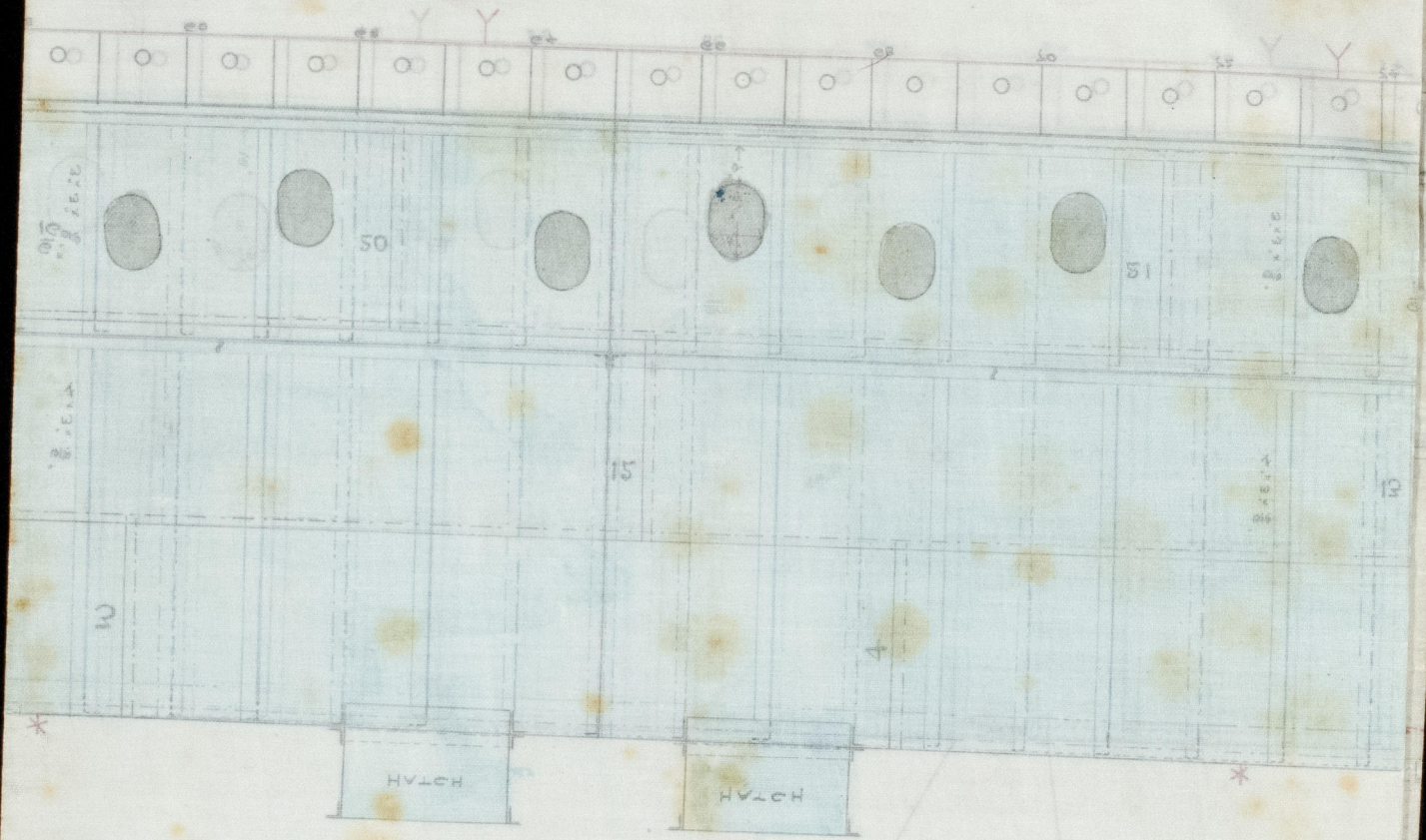
SHARP SHIP BUILDING CO. LTD.  
LONDON  
APR 23 1886

PART PLAN OF LONGITUDINAL BULKHEAD

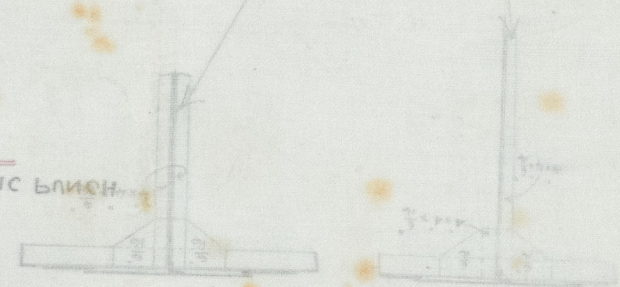
Bazelgette  
Bra rep 143



БАВТЪ БУИ ОЪ ГОНСТАВНИУГ ВЛКНЕУО



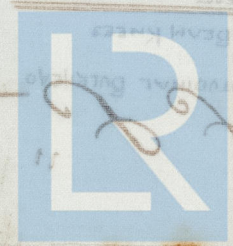
ИОНЕД ТИКОПЕРНИ БИЕ БІЕСЕ ОЪ НДОВКАГІС БІИОН



1 INCH = 1 FOOT

SECTION

№ 125



© 2021

Lloyd's Register Foundation