

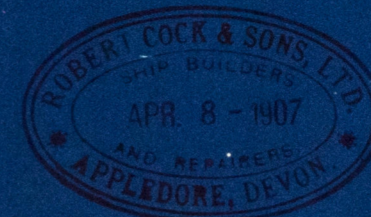


# STEEL SCREW FISHING DRIFTER

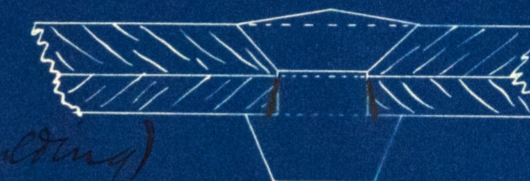
— 86'-0" x 18'-3" x 9'-6" —

## — PARTICULARS OF RIVETS & RIVETING —

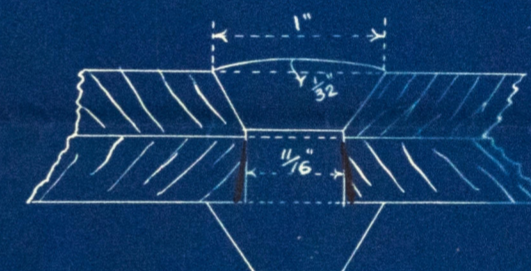
— YARD No 153. —



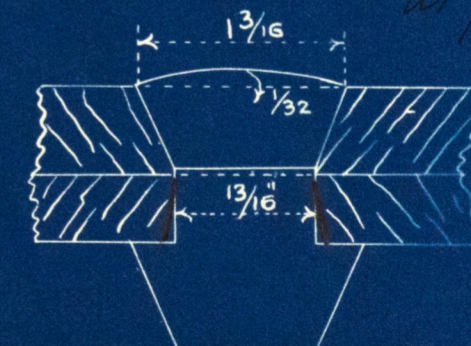
WHERE RIVETTED	DIAMR.	SPACING	HOW RIVETTED	WIDTH LANDING	WIDTH STRAP	WIDTH LAP BUTT	REMARKS.
KEEL	1"	5"	DOUBLE ZIG ZAG				RIVETS MUST BE HAMMERED UP ON ALTERNATE SIDES
STEM AND STERN FRAME	1	5	DOUBLE ZIG ZAG				
GARBOARD UPPER EDGE.	3/4	3	SINGLE	2 1/2"			5 BETWEEN EACH FRAME EXCLUDING RIVETS IN FRAME
DO BUTTSTRAPS	3/4	2 5/8	DOUBLE		9 3/4"		
SHEERSTRAKE UPPER EDGE TO STRINGER <sup>ANGLE</sup>	5/8	2 1/4	SINGLE				EVERY <del>THIRD</del> RIVET TO TAKE MOULDING <i>(solid moulding)</i>
DO LOWER EDGE	3/4	3	DOUBLE	4 1/2"			5 BETWEEN EACH FRAME EXCLUDING RIVETS IN FRAME
DO BUTTSTRAPS	3/4	2 5/8	DOUBLE		9 3/4"		
REMAINDER OF PLATING EDGES	5/8	2 5/8	SINGLE	2 1/4			7 BETWEEN EACH FRAME EXCLUDING RIVETS IN FRAME
DO DO BUTTSTRAPS	5/8	2 1/4	DOUBLE		8"		
FRAMES AND SHELL PLATING	3/4	5 1/4	SINGLE				
DO DO DO	5/8	4 1/2	SINGLE				
FRAMES AND FLOORS	5/8	4 1/2	SINGLE				
STRINGER BAR AND DECK	5/8	2 1/4	SINGLE				
DECK PLATING LANDINGS	5/8	2 5/8	SINGLE	2 1/4			
DO BUTTSTRAPS	5/8	2 1/4	DOUBLE		8		
BULWARKS TO SHEERSTRAKE	5/8	4 1/2	SINGLE				
BULWARK RAIL	5/8	6	SINGLE				
MOULDING	3/4	10 1/8	SINGLE				EVERY <del>THIRD</del> RIVET OF STRINGER ANGLE AND SHEERSTRAKE
BULKHEAD LANDINGS	5/8	2 3/4	SINGLE	2 1/4			
DO BUTTS	5/8	2 3/4	SINGLE				
CASING ANGLES TO DECK & COAMINGS	5/8	2 3/4	SINGLE				
KEELSONS BACK TO BACK	5/8	4 1/2	SINGLE				
CROSS BUNKER PLATING	5/8	2 3/4					
REVERSE FRAMES AND FLOORS	5/8	4 1/2					
BEAMS & DECK	5/8	4 1/2					FULL POINTS
BULKHEAD STIFFENERS	5/8	4 1/2					
BEAM KNEES	3/4	FOUR	RIVETS				



— SKETCH OF FULL POINT  
FOR DECK RIVETING —



— COUNTERSUNK 5/8" RIVET. —



— COUNTERSUNK 3/4" RIVET. —

ROBERT COCK & SONS LTD.  
APPLEDORE, DEVON  
APRIL 8/07.



© 2019  
Lloyd's Register  
Foundation  
BID 77-0534



81077-0534



© 2019

Lloyd's Register  
Foundation