

# ALFRED SECTION

N 292

## DIMENSIONS

LENGTH BETWEEN PERPENDICULARS 210  
BREADTH BETWEEN PERPENDICULARS 35  
DEPTH IN HULL 21  
TONNAGE REGISTERED 1120 tons

Number of Scantlings Class 100A.

Number of Breads 174

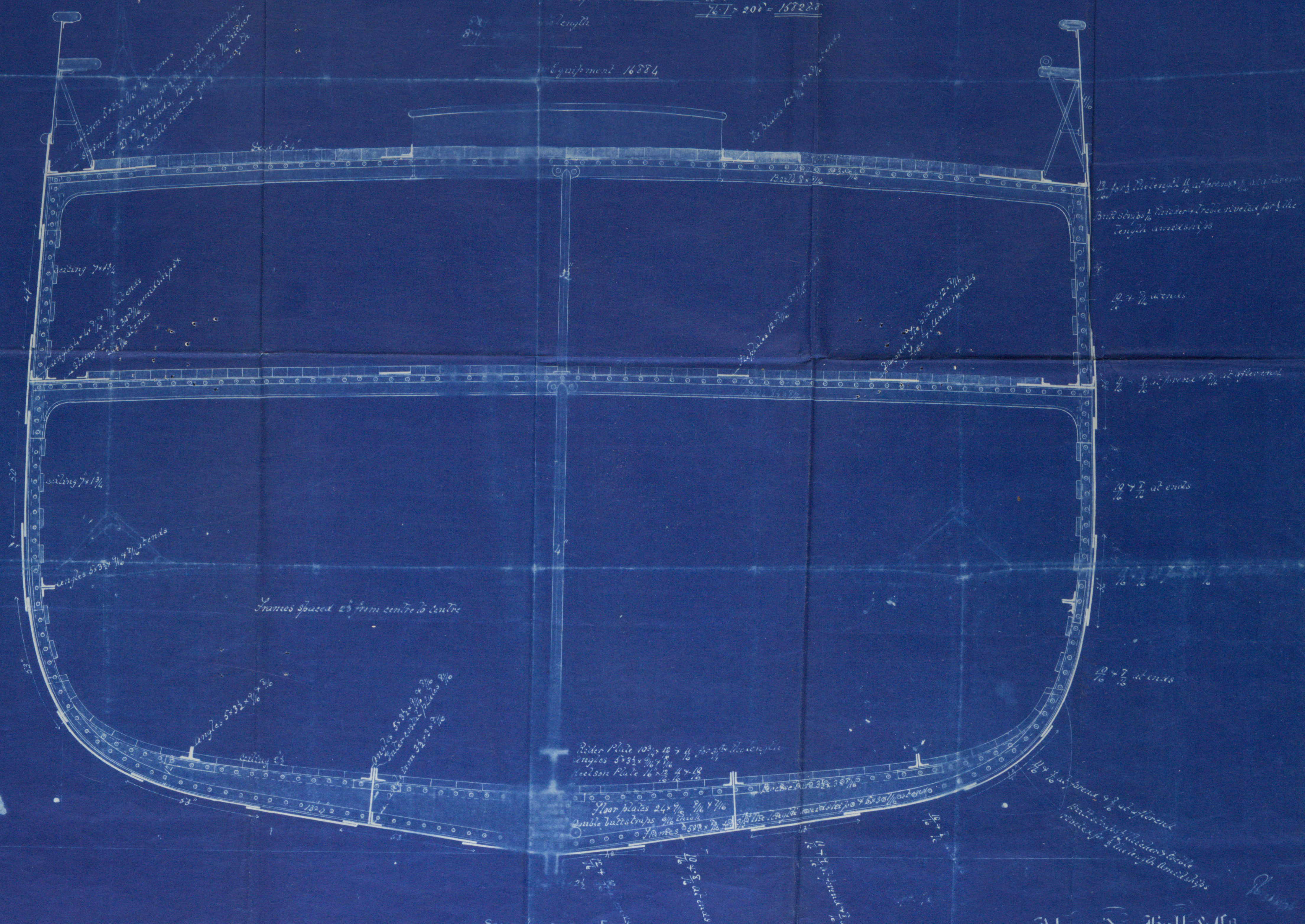
Number of keel to 100 of upper deck beams 23.2

Number of midship sections 35.5

76.1 x 20.0 = 1522.00

58.4 x 27.0 = 1572.80

Equipment 16884



Alexander Hall & Co  
Shipbuilders  
ABERDEEN

31077-034



Lloyd's Register  
Foundation





B1D77-0311



© 2019

Lloyd's Register  
Foundation