

Mr. J. B. J.
2/6/83.

MIDSHIP SECTION

S. S. NO 8

No 9907-48
+ 1/10 990.70
70898, 18 No for Equipment
Equipment

1/2 Breadth 14.00
1/2 Girth 26.13
Depth 15.25
56, 38 No for Frames
Length 178.9
9907.482 No for Plating

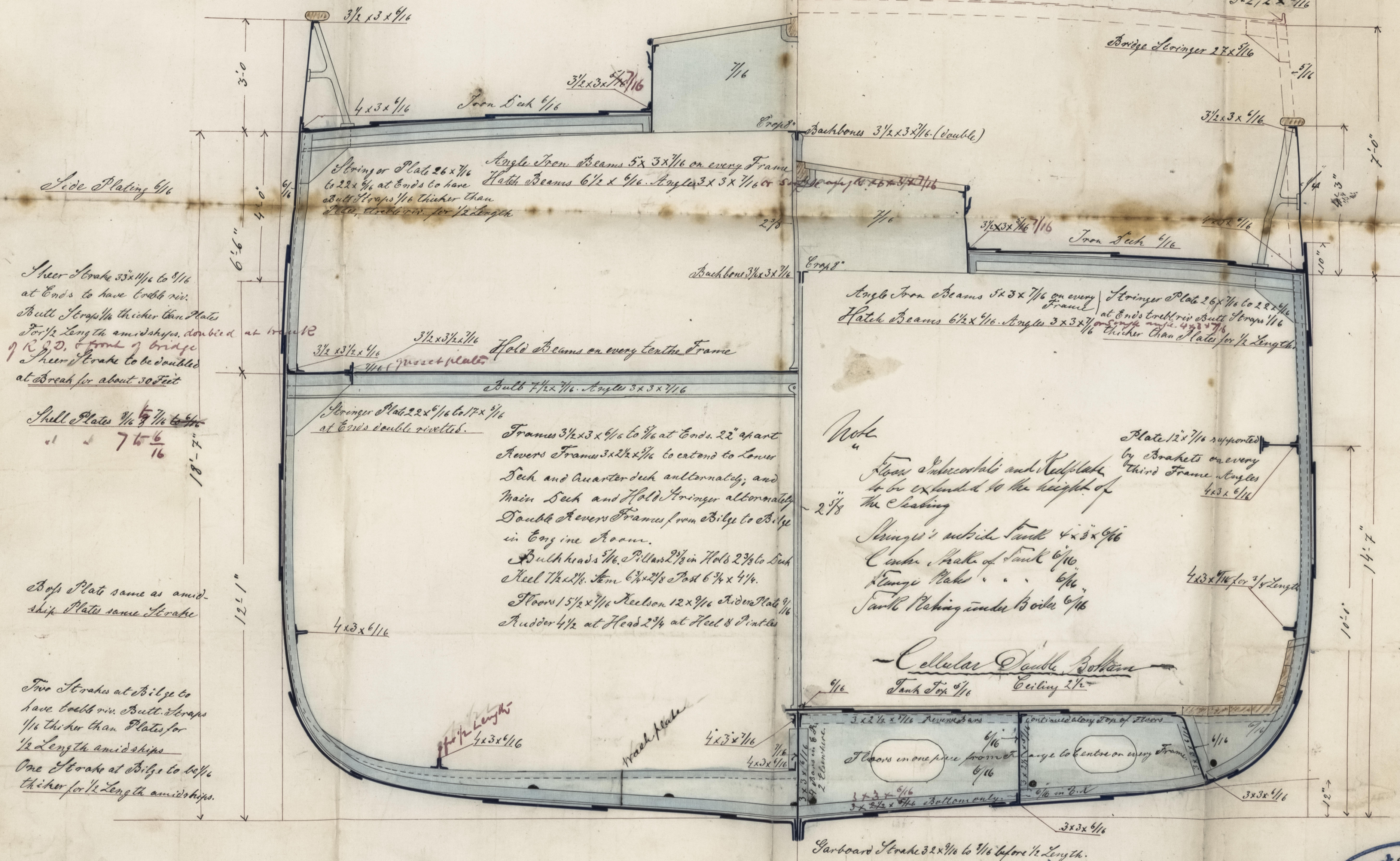
Proportions

Breadth in Length 6.39
Depth in " 11.73

Dimensioner:

	Feet	inches
Stroke Length	188	0
Length mellem Perpendikulær	180	0
Stroke Brede	28	0
Dybde i Drummet	13	11 1/2
Do. fra Højstens Underkant til overste Dek	15	2
Tonn (gammelt Maal)		75.7
Nominale Bæstkræfter		100 H.P. i 4 Stager
Class		

2 Bowers	13 1/2	Ends exclusive of Stock
1 Do	11 1/2	" " " "
1 Stream	4 3/4	" " " "
1 Kedge	2 1/2	" " " "
1 Do	1 1/4	" " " "
210 Tails	1 1/4	stud Chain Cable
60 "	1 3/6	Stream
75 "	8 1/2	Trawl
90 "	6 1/2	Warp
90 "	4	"



Note

From Subordinate and Keel Plate
to be extended to the height of
the Chesting
Shoos's outside Tank 4 x 3 1/4
Center Plate of Tank 6 1/4
Tang's Plate 6 1/4
Tank Plating under Boiler 6 1/4

Cellular Double Bottom
Tank Top 1/4
Ceiling 2 1/4

SCALE 1/2" = ONE FOOT

J. G. J. J.
Surveyor to Lloyd's

