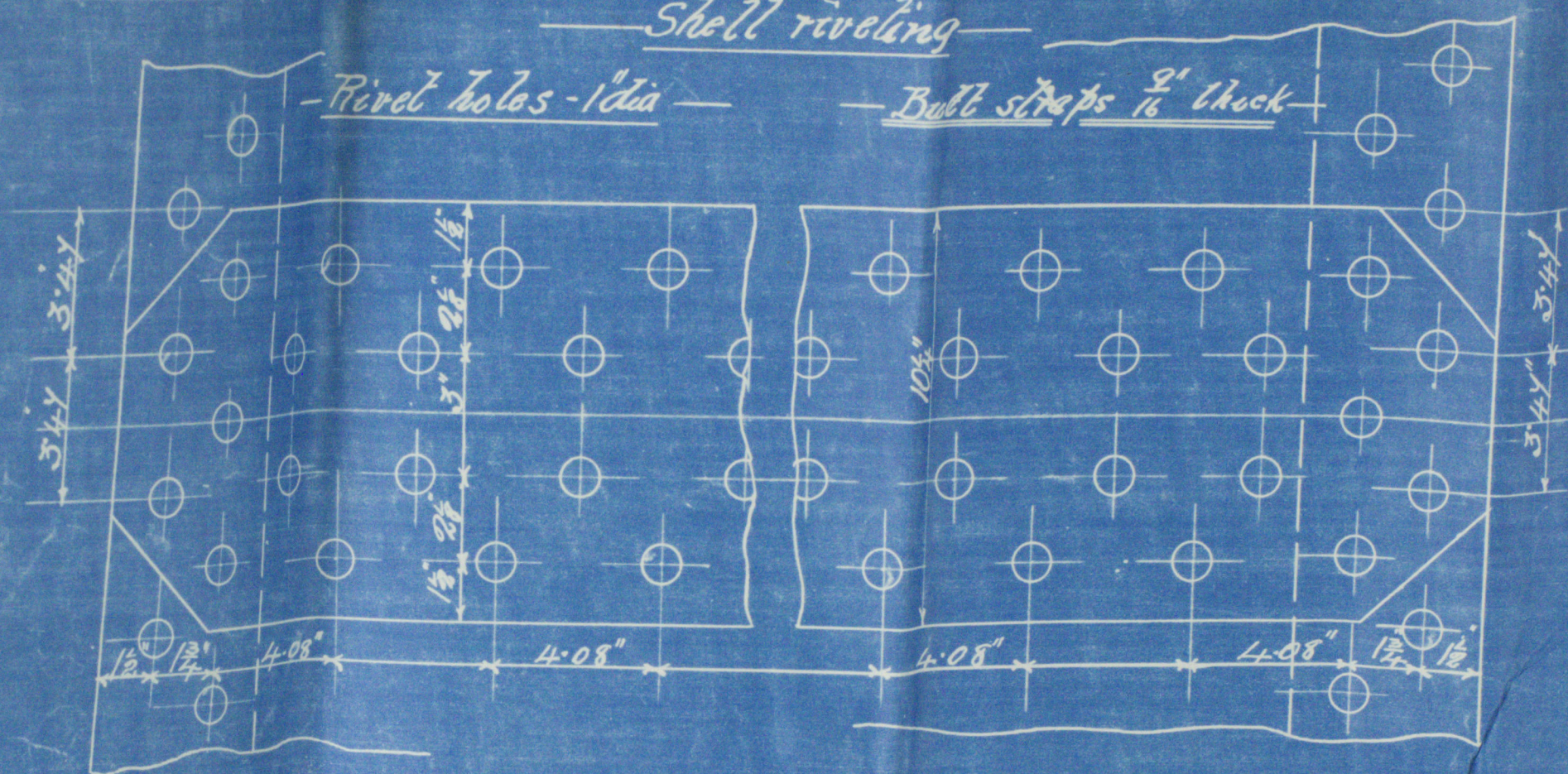
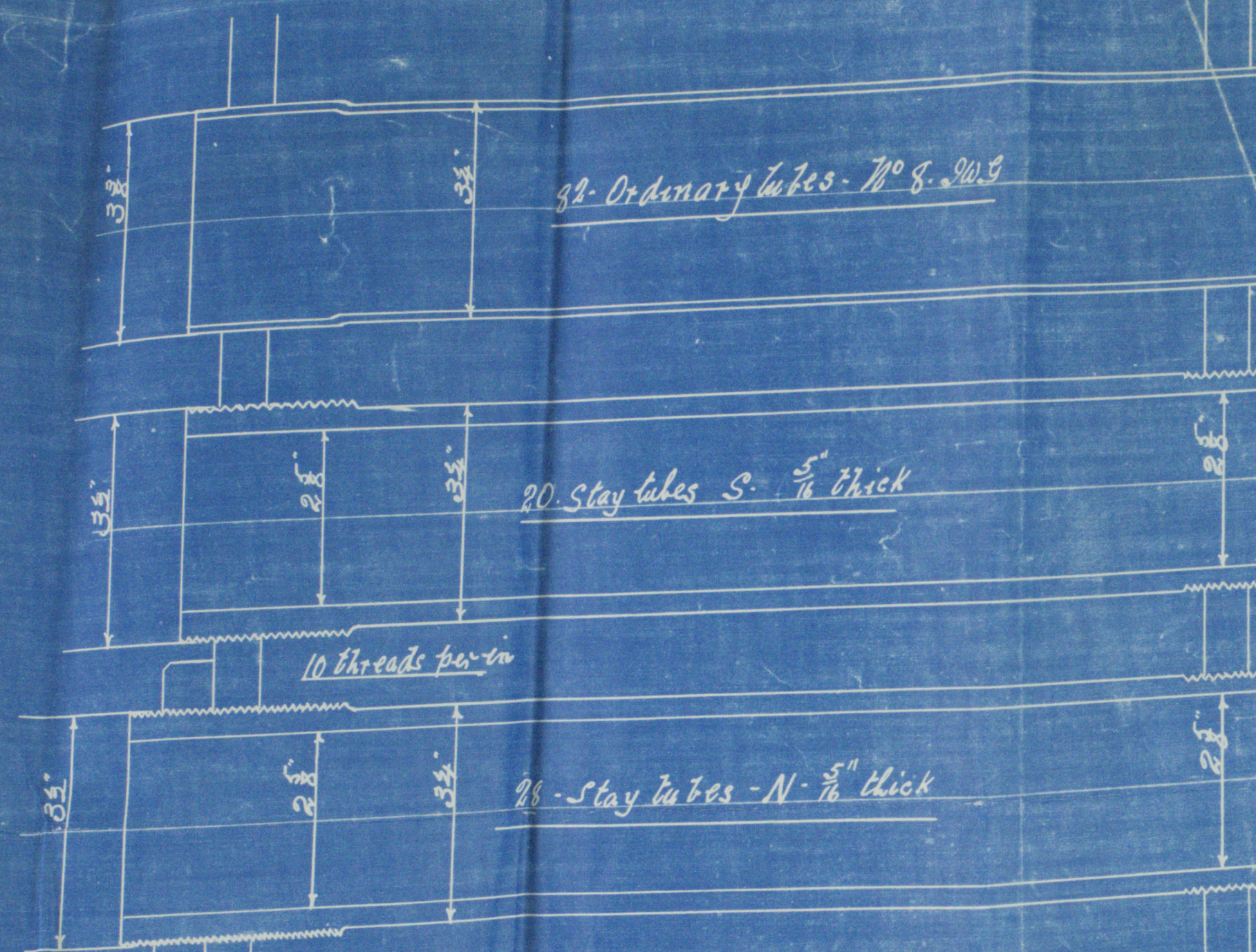
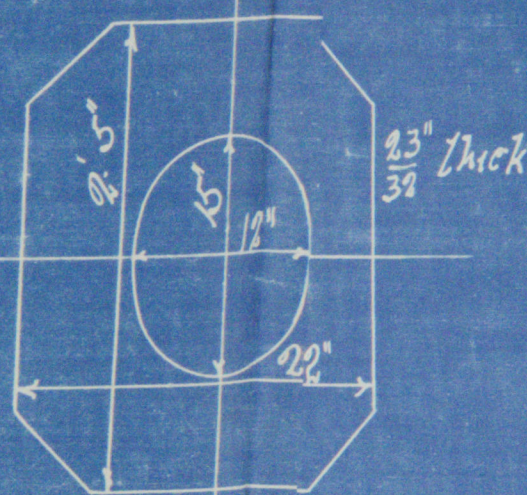


Rkr
Pay: \$4:00

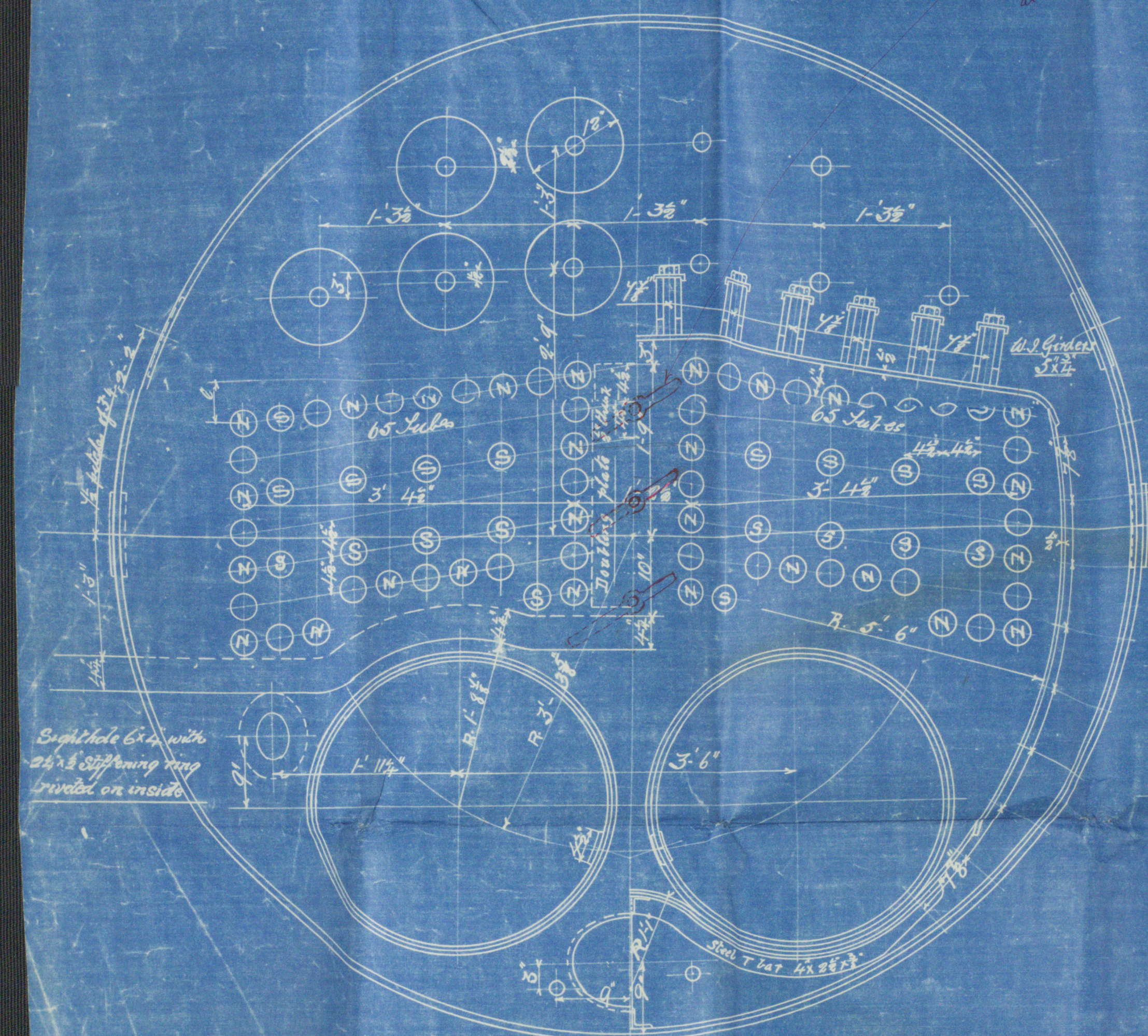


Circumference of shell divided into 114 pitches

15th Aris Circumferentially



130 Total number of studies - Wrote from



Manhole 14 x 11 —

Steel stays - 1/2 dia secured into plates 10 threads
nutted inside + outside - Not worked in fire

Particulars of riveting

- Shell - Longitudinal seams - Double built straps - Riveted as shown —
- " Strength of plate = 75.5% - Strength of rivets = 76.8% —
- " Circumferential seams - Double riveted as shown —
- " End plates - Double riveted $\frac{3}{4}$ rivets - 3" pitch —
- Furnaces - Double built straps - Single riveted $\frac{3}{4}$ rivets - 2" pitch —
- Comb^d chambr^s - Single riveted $\frac{3}{4}$ rivets - 2" pitch —
- All plates & rivets steel - All holes drilled in place —
- Minimum tensile strength of shell plates - 28 tons per sq in —
- Working pressure - 115 lbs - Test pressure 230 lbs per sq in —

Heating space.	34 feet.
Subs	725.0
Furnaces	76.0
Combustion chairs	89.0
Front sub. pit.	10.0
Sub.	= 900.0

S. S. "PARIS."

DONKEY BOILER
— I OFF —

Under survey of Hamburg: Braupolizei
" " " Germanischer Lloyd

J.S.
17.4.00
 PNB
 Redwood

J.S.S. ~~Paris~~ Philadelphia

Donkey, Railen



© 2019

Lloyd's Register
Foundation

1567-102