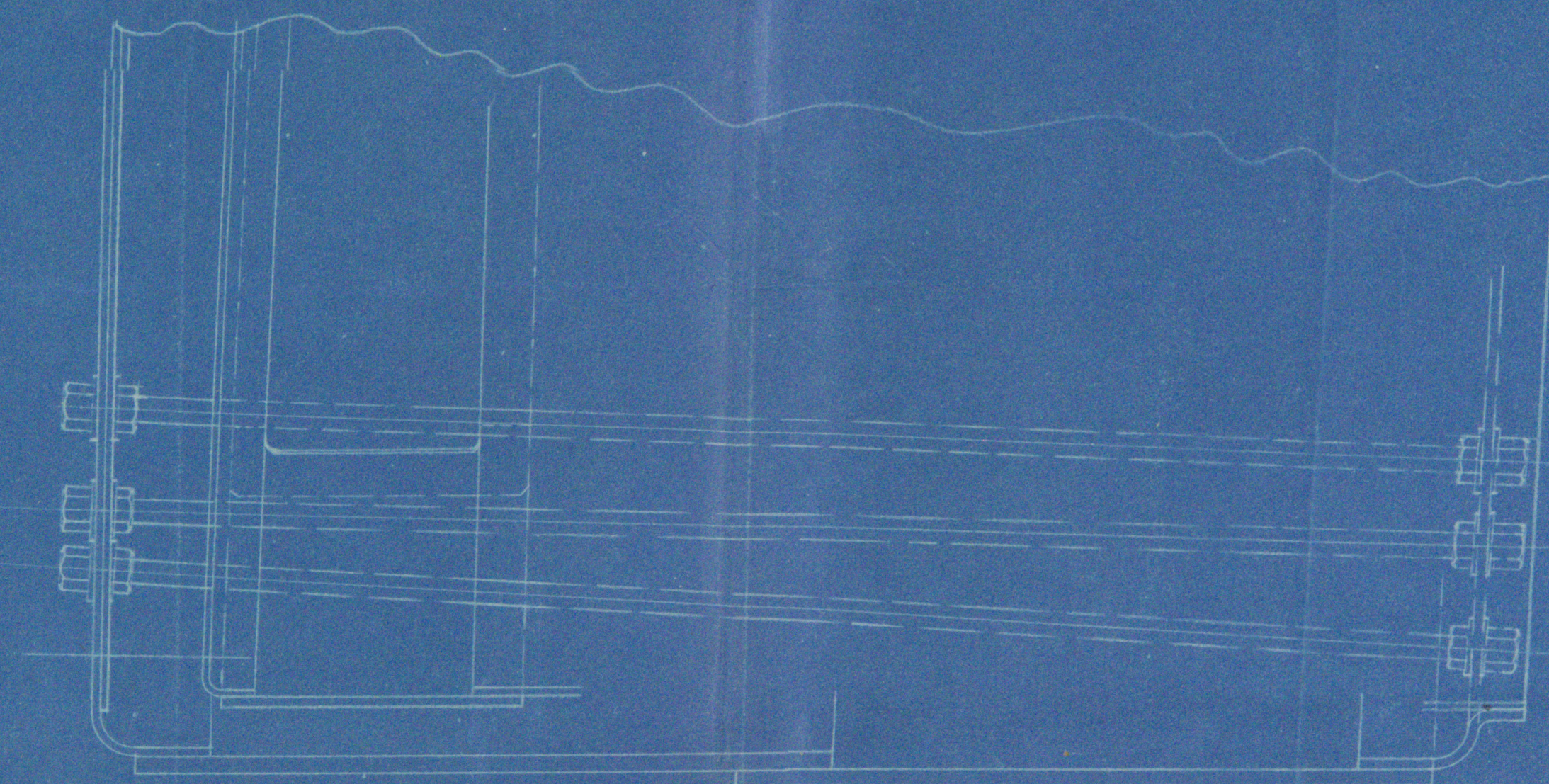
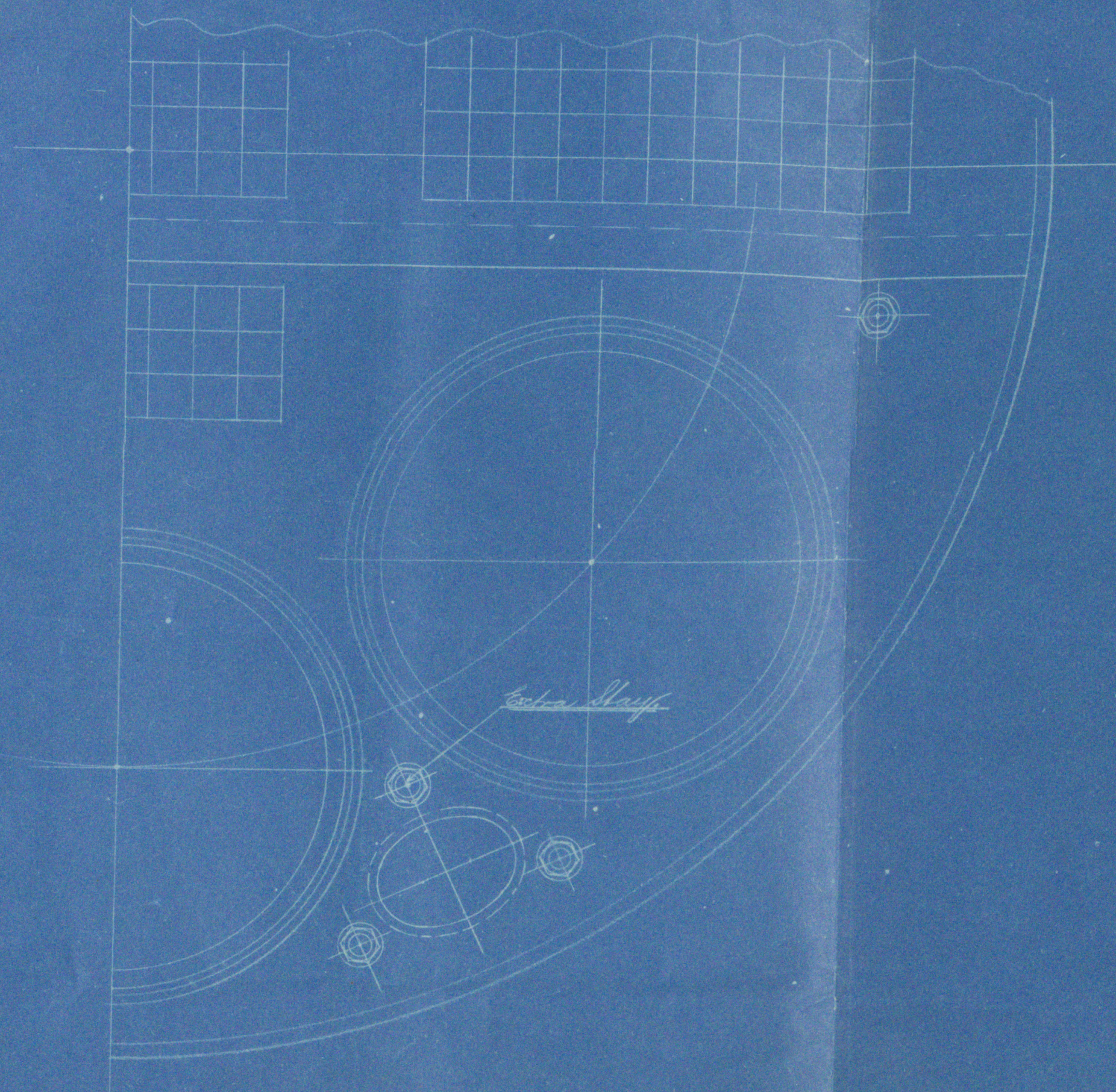


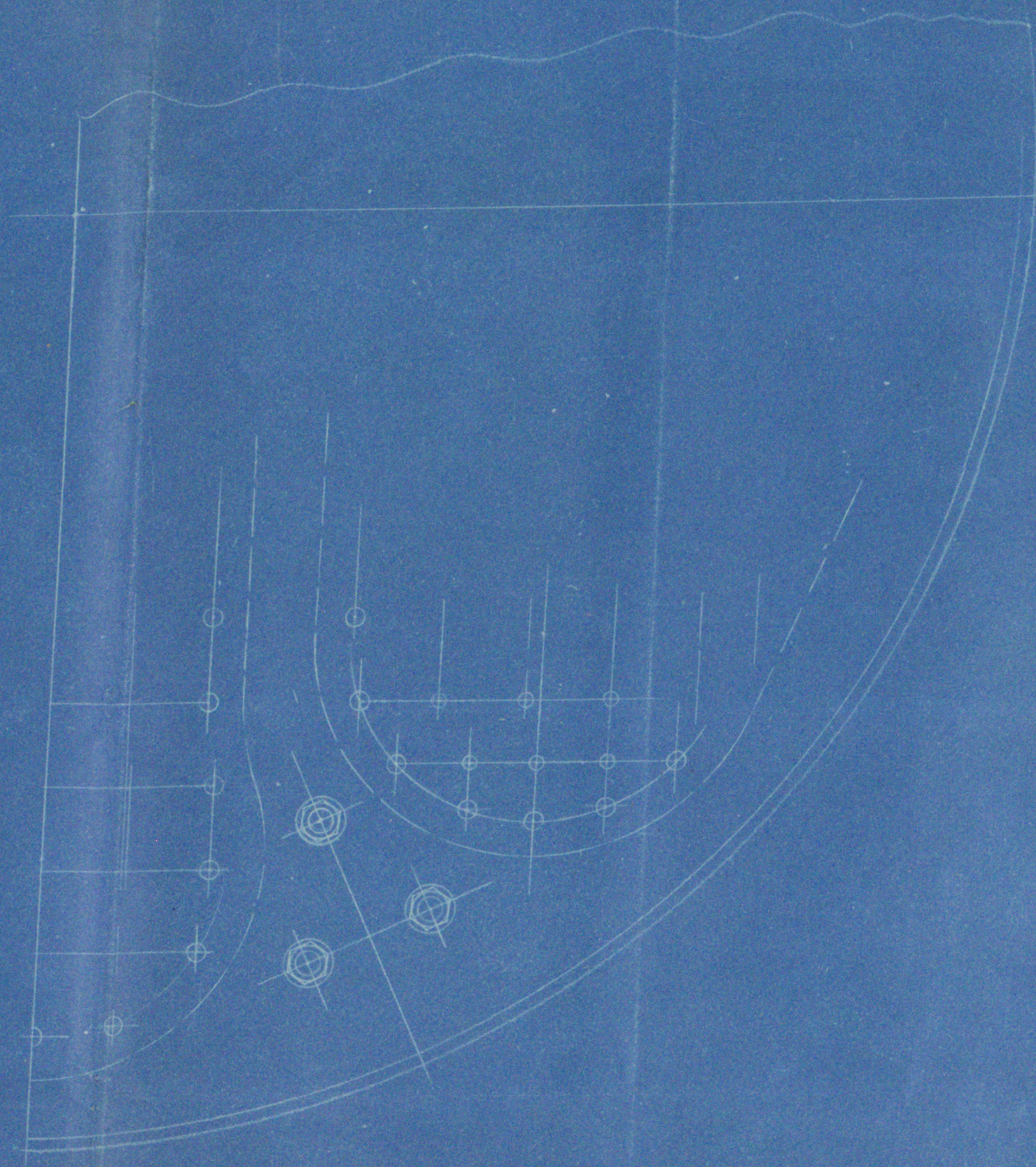
4280.

MS. 26/7/99.



Extra Longitudinal Stay in Main Boilers (S.E.) No ~~170~~ 170.

MS. 26/7/99.  
MS. 26/7/99.  
MS. 26/7/99.



© 2019  
Lloyd's Register  
Foundation



Workman Charles 40 ~~to~~ <sup>Single</sup> End Ruler

Extra Stay at Bottoms

Y.B.S. Indian

Bel 5212

© 2019