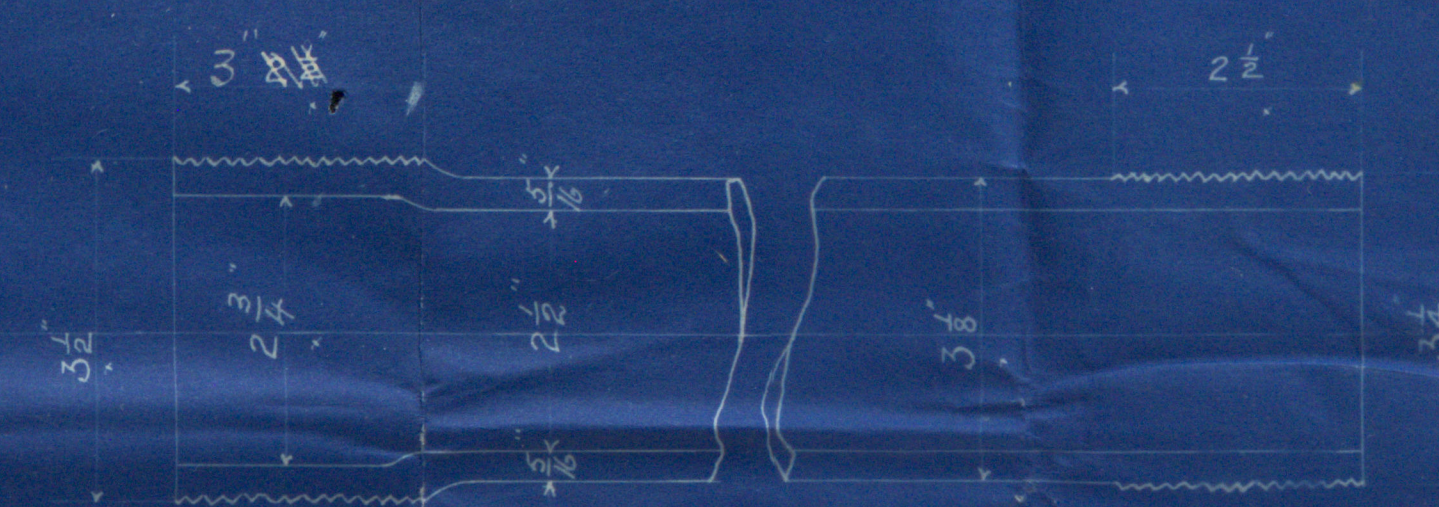


4377  
728 16-9-99  
188 10-10-99

20.10.99

### HEATING SURFACE

80 TUBES 5-9 LONG 3 1/2 EXT DIA	= 391
2 FURNACES 5-9 3 1/2	= 54
T & S OF FIRE BOXES	= 30
BACKS	= 19
BACK TUBE PLATES	= 12.5
FRONT PLATE	= 7.5
<b>TOTAL</b>	<b>= 514</b>

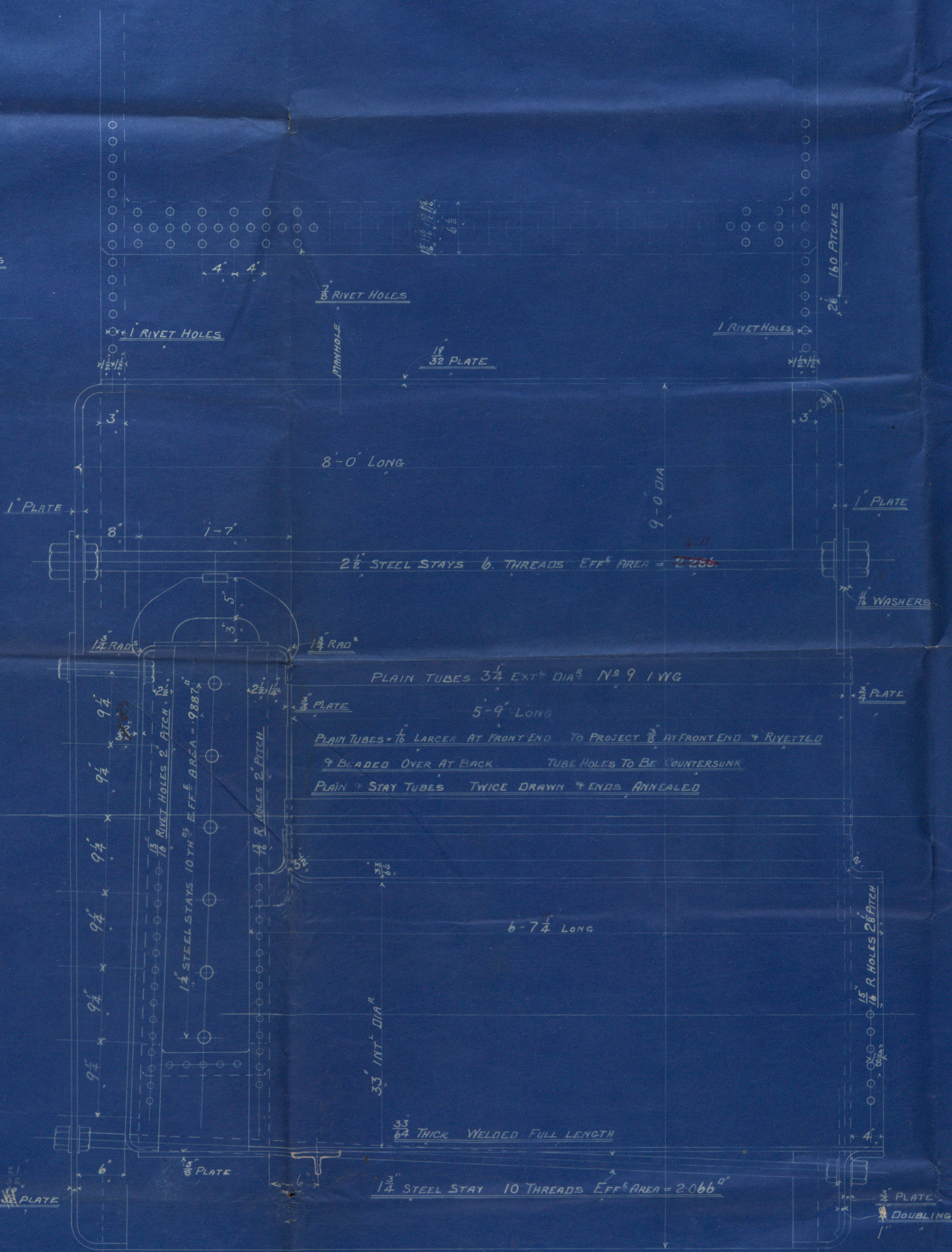
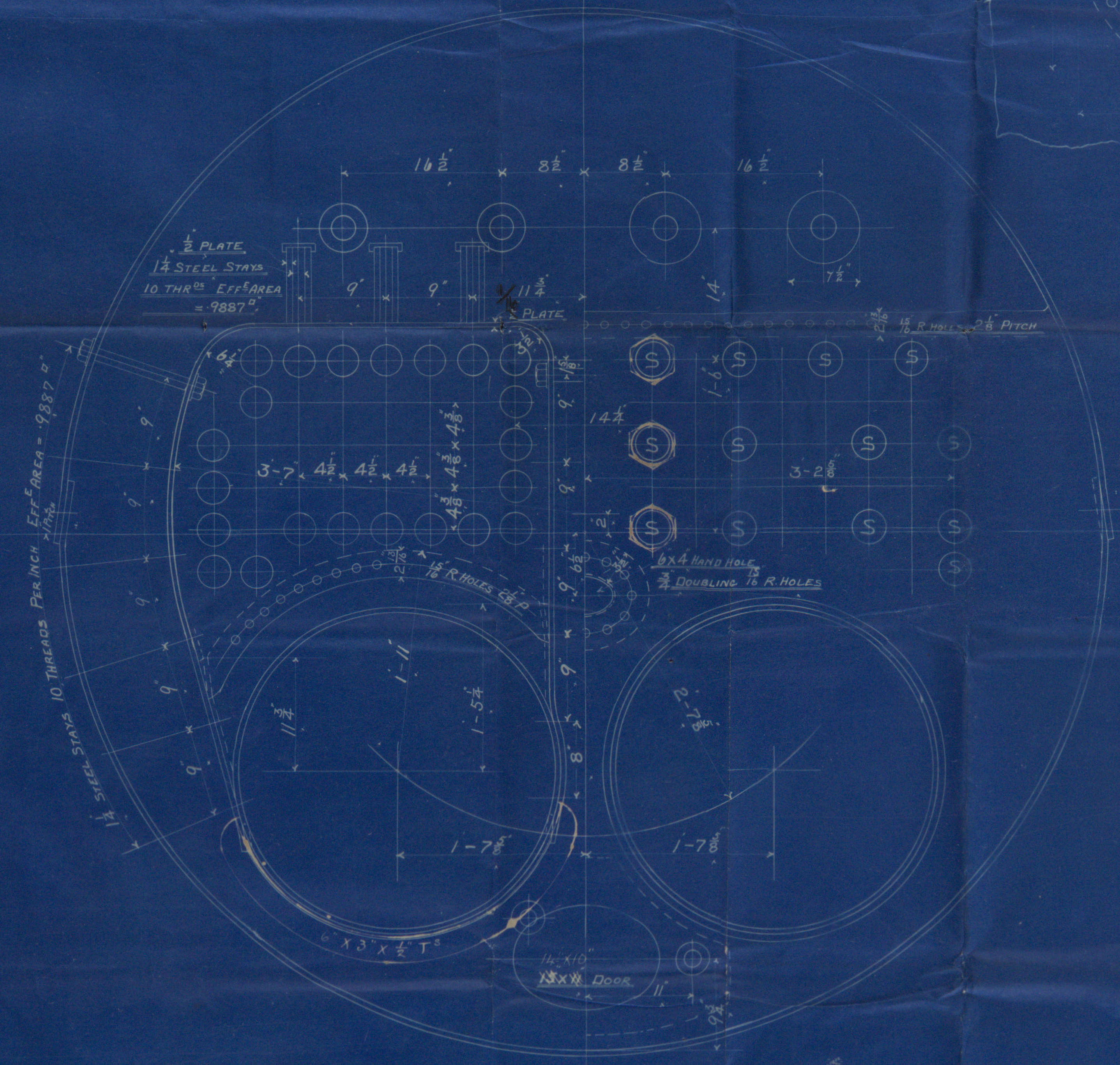
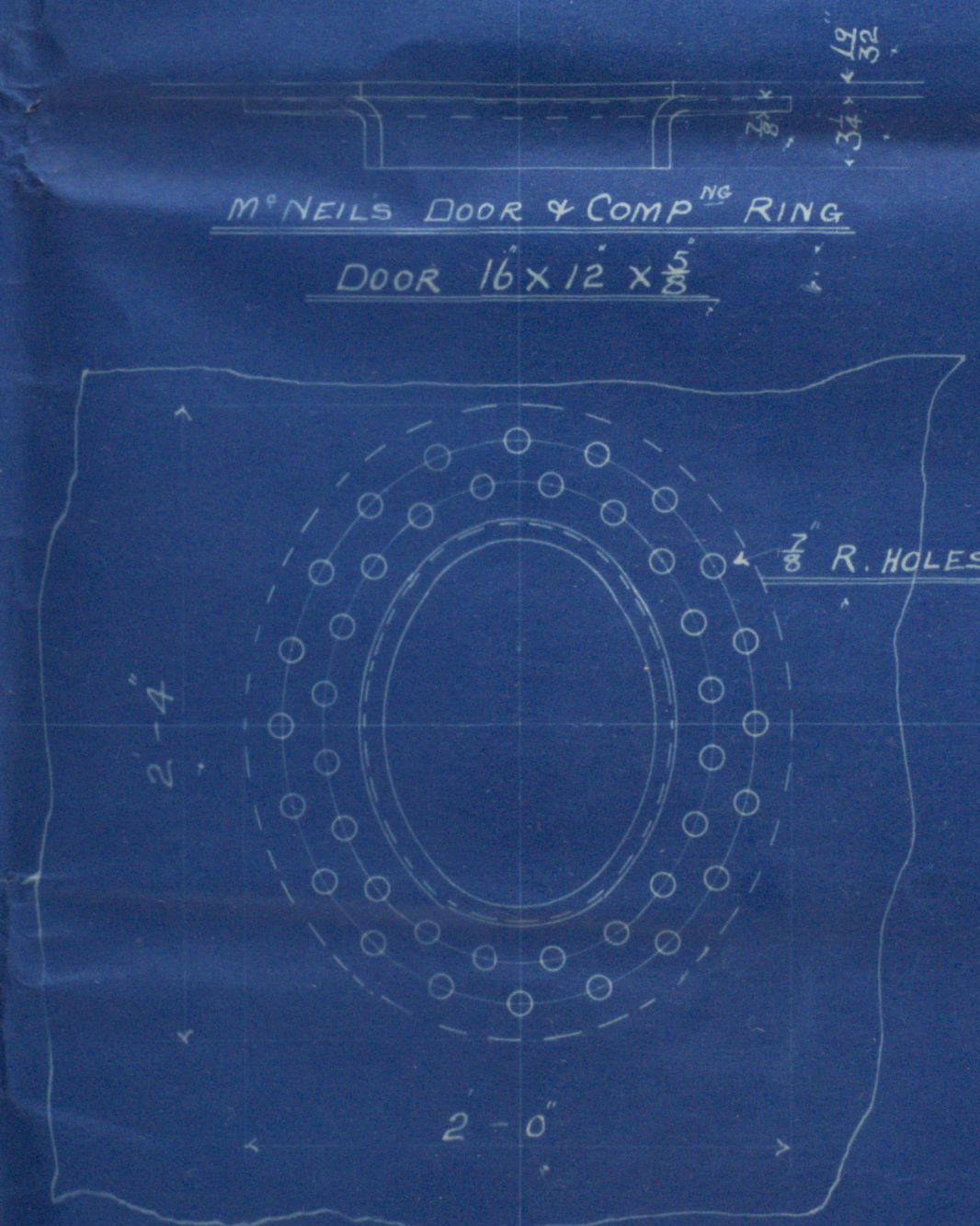


### GRATE SURFACE

2 FURNACES 33 INT DIA 4-8 BAR	= 25.66
<b>H.S.</b>	<b>= 20</b>
<b>G.S.</b>	<b>= 15.2</b>

IRON STAY TUBES MARKED S.  
10 THREADS PER INCH

6 of fitted with nuts on centre stays only  
at front end



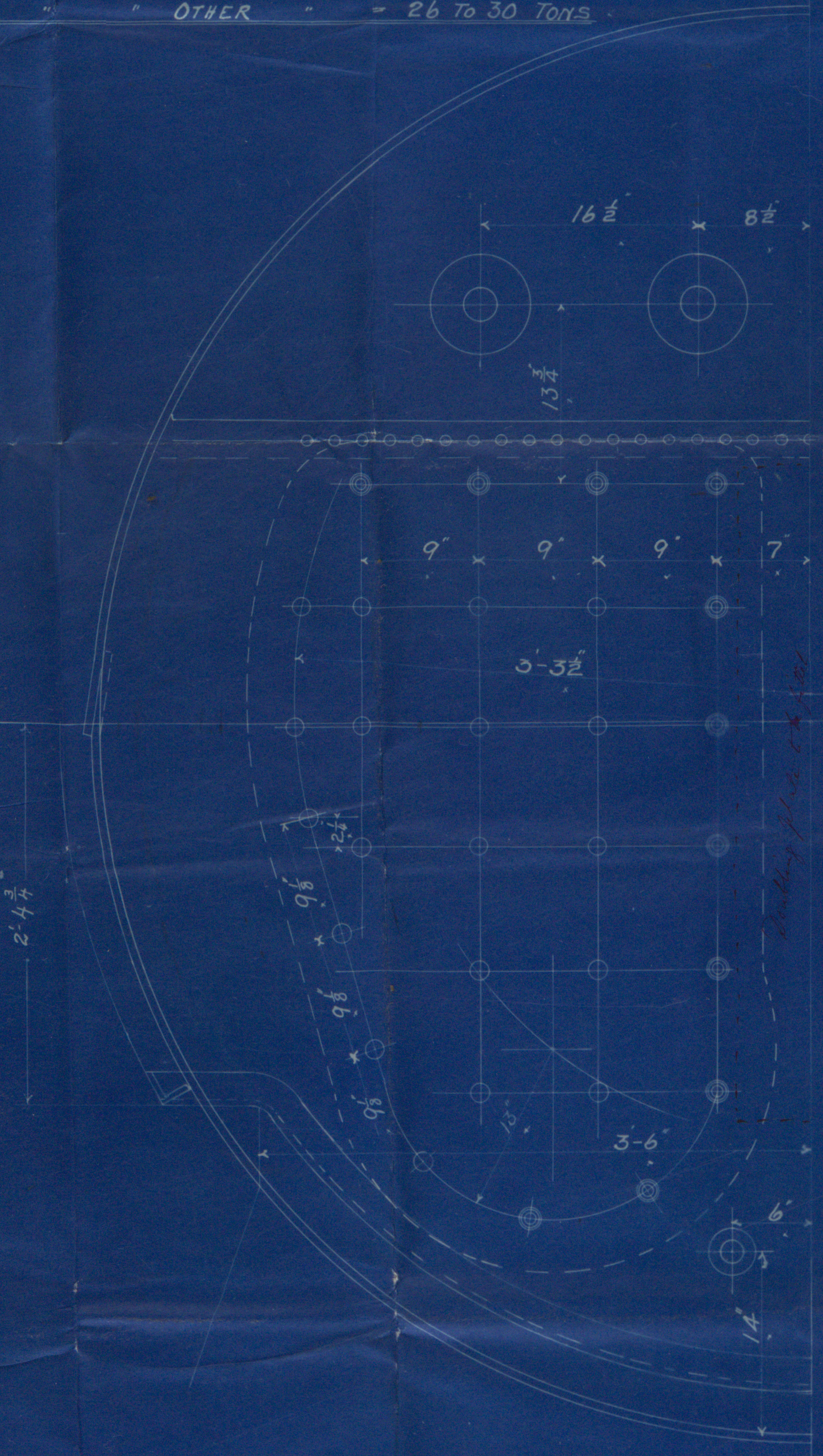
### LONGITUDINAL JOINT

PLATE 3/8" RIVET HOLES 7/8" PITCH 4"	
PERCENTAGE OF PLATE B of T	= 78.1
" RIVETS	= 96 LLOYDS = 86
COMBINED P & R	= 80.25
WORKING PRESSURE	= 103.6 LBS LLOYDS = 118 LBS
FACTOR OF SAFETY	= 5.2

### END CIR<sup>L</sup> JOINT

PLATE 3/8" RIVET HOLES 1" PITCH 2 1/2"	
PERCENTAGE OF PLATE B of T	= 52.9
" RIVETS	= 51.1 LLOYDS = 52.9

NOTE: ALL RIVET HOLES DRILLED IN PLACE.  
TENSILE STRENGTH OF SHELL PLATES = 28 TO 32 TONS.  
OTHER = 26 TO 30 TONS.



### STEEL DONKEY BOILER

9-0 DIA x 8-0 LONG 100 LBS WORKING PRESSURE  
TO PASS BOARD OF TRADE, LLOYDS & AMERICAN PASSENGER SURVEYS  
ALL MATERIAL STEEL EXCEPT TUBES WHICH ARE OF IRON  
APPROVED BY B. OF TRADE APPROVED BY LLOYDS  
SCALE 1/2" = ONE FOOT

Nº 170

ALL FIRE BOX STAYS FITTED WITH NUTS INSIDE & OUT.  
1 1/2 DIA 10 THREADS EFF AREA = 1.478"  
1 1/8 DIA 10 " " = 1.22"



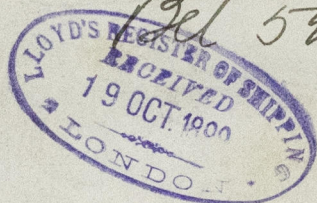
No. 170 of 1900



Belfast

Workman Clark & Co 140  
Donkey Boiler

G.S.S. "Indian"  
Bel 5312



© 2019

Lloyd's Register  
Foundation  
REL71-065