

STEEL S.S. 490-0" x 56-0" x 34-0" (KEEL TO BEAMS SPAR DN)

— N<sup>o</sup> C. —

TO CLASS 100A1 AT LLOYDS SPAR DECK RULE.

— SCALE  $\frac{1}{2}$ " = ONE FOOT —

## NUMERALS

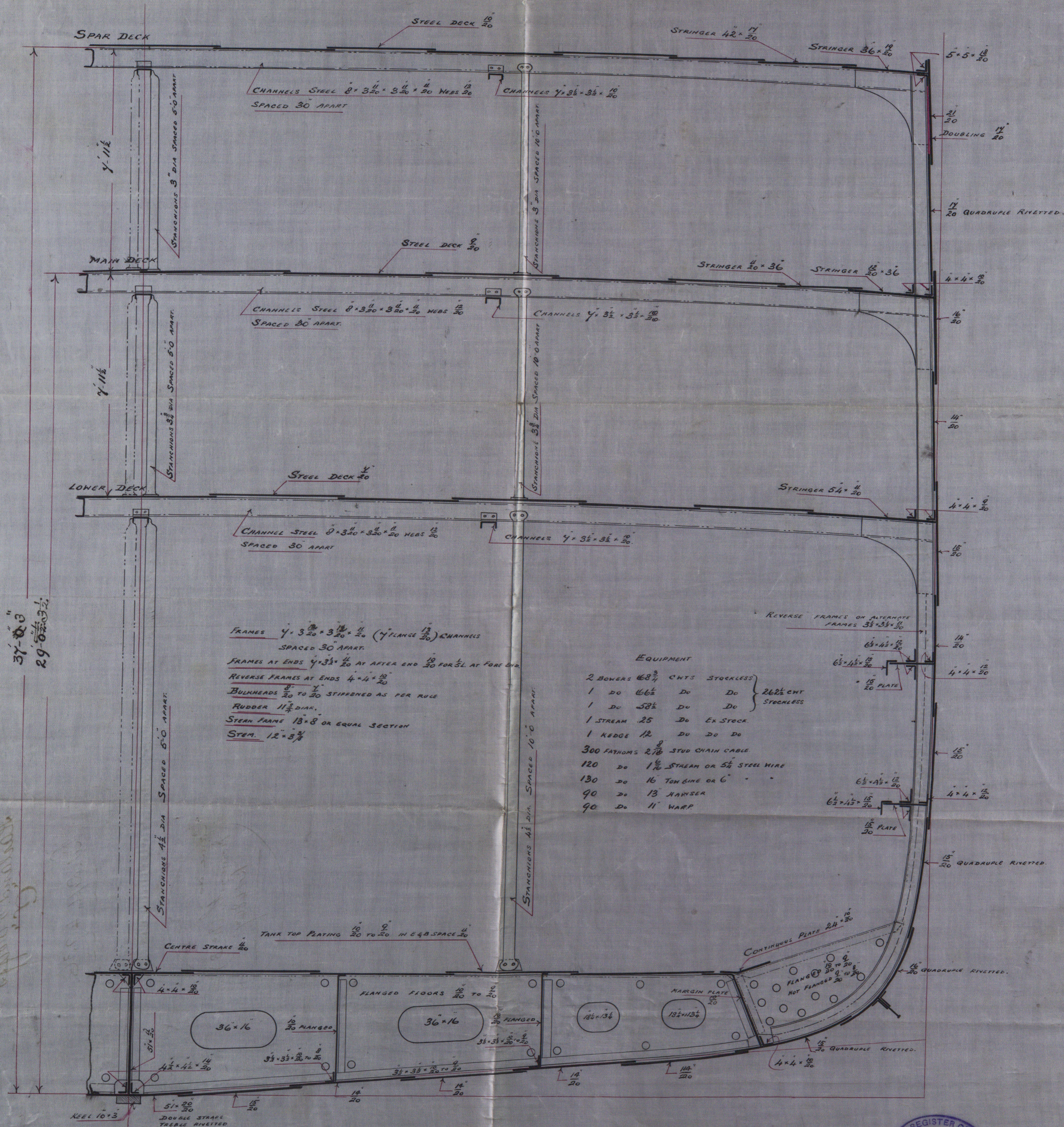
$$\begin{aligned} 52 + 29 \cdot 29 + 28 + 104 &= 109.54 && \text{FRAMING NUMBER} \\ 109.54 \cdot 488 &= 53,469 && \text{PLATING NUMBER} \\ 125.99 \cdot 488 + 2300 &= 63,488 && \text{EQUIPMENT DO.} \end{aligned}$$

— PROPORTIONS —

8.7 BREADTHS. 16.7 DEPTHS TO MAIN DECK.

Manhattan Rel. 4936

(Same as Monmouth.)



## EQUIPMENT

2 BOWERS	£8 <sup>3</sup> / <sub>4</sub>	CNTS	STOCKLESS	} 26 <sup>1</sup> / <sub>2</sub> CNTS STOCKLESS
1 DO	66 <sup>1</sup> / <sub>2</sub>	DO	DO	
1 DO	58 <sup>1</sup> / <sub>2</sub>	DO	DO	
1 STREAM	25	DO	EX STOCK	
1 KEDGE	12	DO	DO DO	
300 FATHOMS	27 <sup>3</sup> / <sub>4</sub>	STUD CHAIN CABLE		
120 DO	1 <sup>1</sup> / <sub>2</sub>	STREAM OR 5 <sup>1</sup> / <sub>2</sub> STEEL WIRE		
130 DO	16	TONGUE OR 6" - -		
90 DO	13	NAWSE		
40 DO	11	WARP		

CONTINUOUS PLATE 24





Belfast

S.S. Manhattan  
Midship Section.  
Harland & Wolff's  
Co.



Rel. Repl. 4936.

Came as "  
"Monmouth" (n<sup>o</sup> B)  
Rel 4847



© 2019

Lloyd's Register  
Foundation