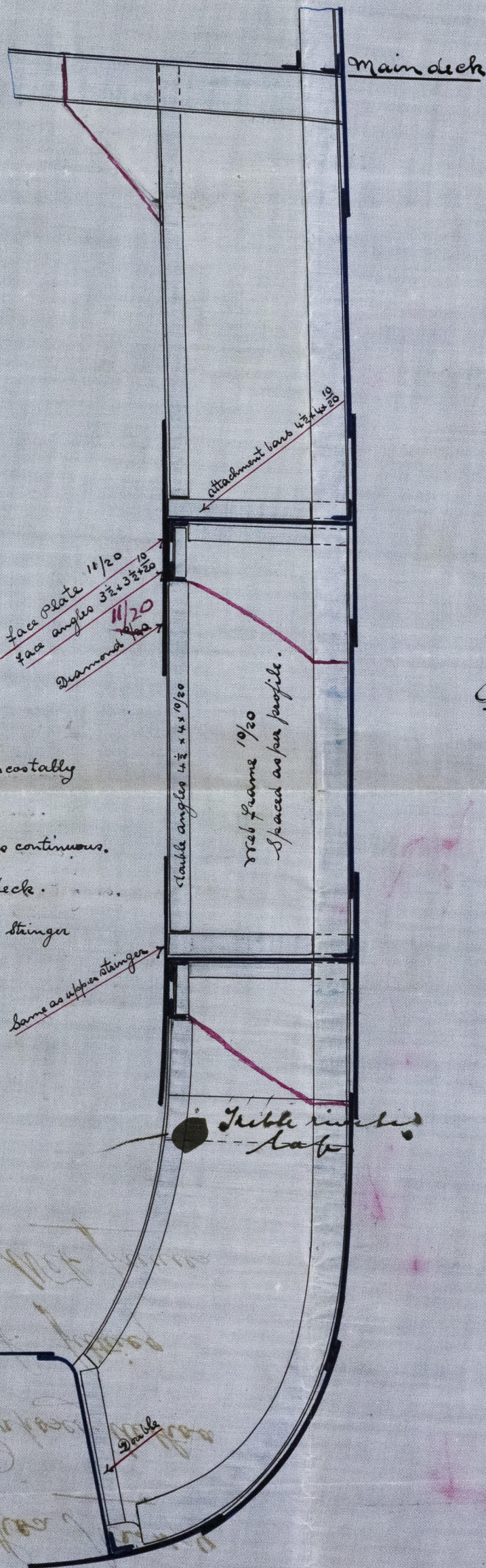
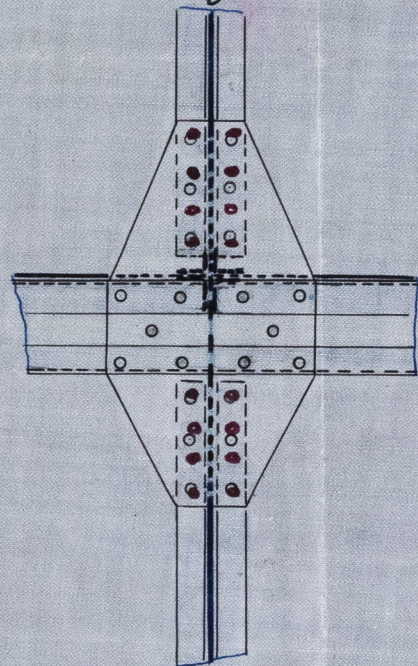


Sketch of Method of Fitting Web Frames.
No 149 S.S.
Scale 1/2" = 1 foot.

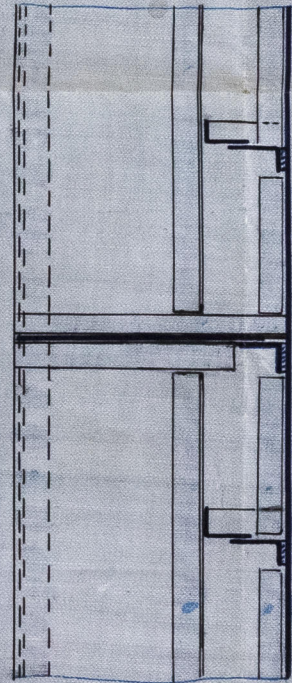
25.2.97



Plan of Diamond.



Plan of Stringer in way of webs.



Stringer plate fitted intercostally
 between webs.
 Stringer face plate & angles continuous.
 web plate continuous to deck.
 web face bars stopped below & above stringer
 face plates.

24.2.97

25/2/97



Lloyd's Register
 Foundation
 BEL69-0055