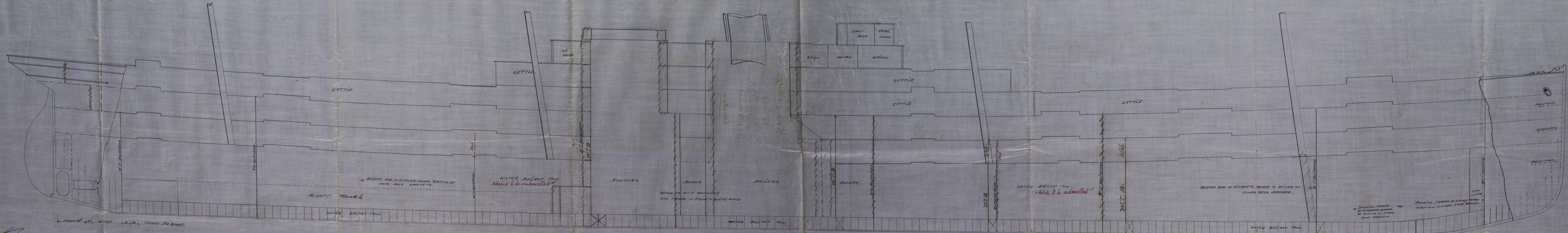


18.5.97



No 321
 SECTIONAL ELEVATION
 S.S. 490'0" x 52'0" x 36'4" (KEEL TO DECK)
 SERIAL 3 INCHES ONE FOOT
 S.S. 'Bay State'

1877



SECTIONAL ELEVATION

2.2 40.0 x 25.0 x 25.0 (100' x 100' x 100')

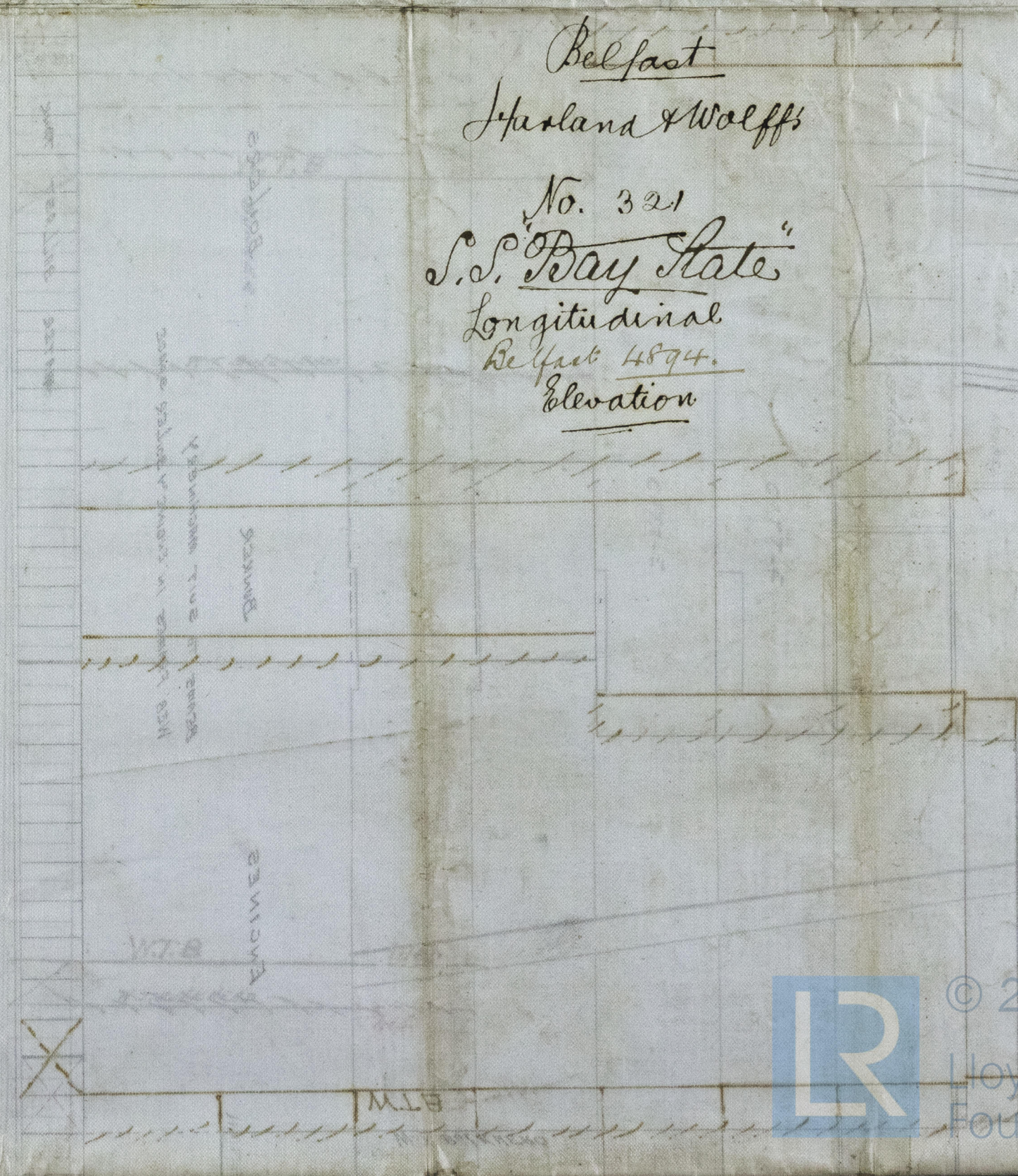
SECTIONAL ELEVATION

No 351

W. G. G. G.

Belfast
Harland & Wolffs

No. 321
S.S. Bay State
Longitudinal
Belfast 4894.
Elevation



© 2019

Lloyd's Register
Foundation