

*Manhattan*

*Liverpool Report*  
*No 46881*



*Bel 4936*

*s/s*

*"Monmouth"*

*Liverpool Report No 45967*

*League with*  
*Belfast Rept. 4847*

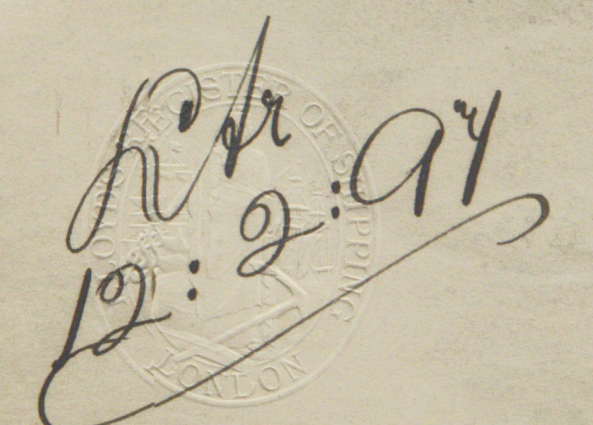
BEL68-0098



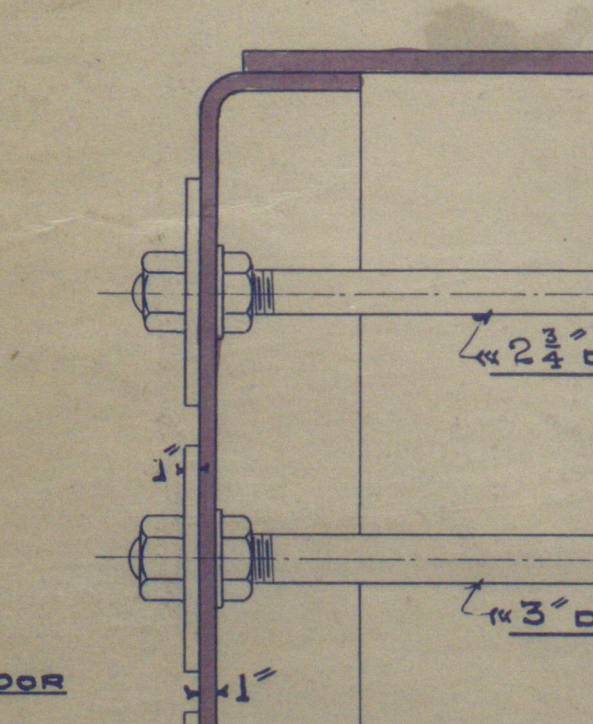
© 2019

Lloyd's Register  
Foundation





Technical drawing of a door hinge assembly. The drawing shows two hinges mounted on a door edge. Dimensions are indicated: a vertical distance of 12 3/4" between the hinge centers, a horizontal distance of 3" from the door edge to the hinge center, and a horizontal distance of 1" from the door edge to the hinge mounting plate. The text "DOOR" is visible at the bottom left.



2 OFF FOR ENGINES N<sup>OS</sup> 4150 & 4151  
2 " " " N<sup>OS</sup> 4152 & 4153