

Belfast 4847

Harland & Wolffs

"B" & "C"

"Monmouth"

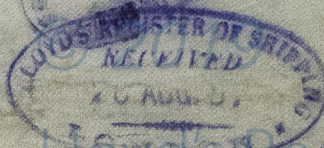
Belfast 4847

Midship Section



s/s Manhattan

Belfast 4936



LR

Lloyd's Register  
Foundation  
36468-0093



20.1.97 "B."  
 10.3.97 "C."  
 24.6.97  
 13.8.97  
 28.8.97

# MIDSHIP SECTION.

STEEL S.S. 490'0" x 56'0" x 37'6" (KEEL TO BEAMS SPAR DECK)

N.B. 4'6" appo. 10/3/97

TO CLASS 100 A.I. AT LLOYD'S SPAR DECK RULE.

SCALE 1/2" INCH = 1'00"

## NUMERALS.

52 + 29.04 + 28 + 100 = 109.54 FRAMING NUMBER.  
 109.54 x 4.89 = 534.55 PLATING NUMBER.  
 109.54 x 4.89 + 2300 = 6373.55 EQUIPMENT NUMBER.  
 126.45 x 4.89 + 7652.4 = 68872

## PROPORTIONS.

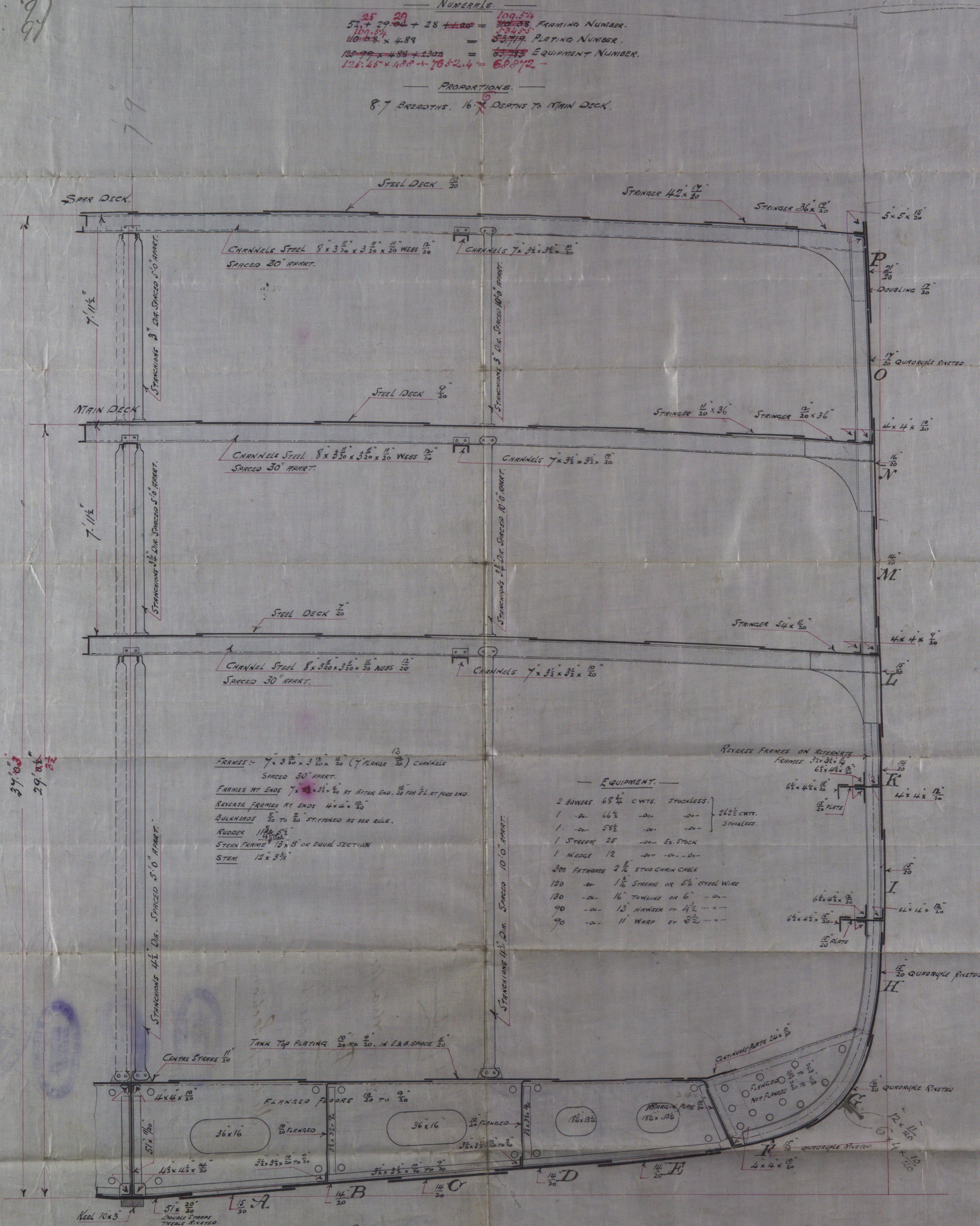
8.7 BREADTHS. 16.7 DEPTHS TO MAIN DECK.

"Monmouth" (B)

Rel. 14.84.7

Manhattan (C)

Rel. 14.9.36



## EQUIPMENT.

2 BOWERS 68 1/2 CWT. STOCKLESS.  
 1 - 66 1/2 - 26 1/2 CWT. STOCKLESS.  
 1 - 58 1/2 - 26 1/2 CWT. STOCKLESS.  
 1 STEERING 25 - EX. STOCK  
 1 WEDGE 12 - - - -  
 300 FATHOMS 3/4" STUB CHAIN CABLE  
 120 - 1/4" STEEL OR 5/8" STEEL WIRE  
 130 - 16" TOWLING OR 6" - -  
 90 - 13" HANGER OR 1 1/2" - -  
 90 - 11" WARD OR 3/2" - -

V.B.M.  
 20/1/97

2.1.97