

Midship Section of No 141 S.S.

To Class 100 #1 @ Lloyd's Spar Dk.

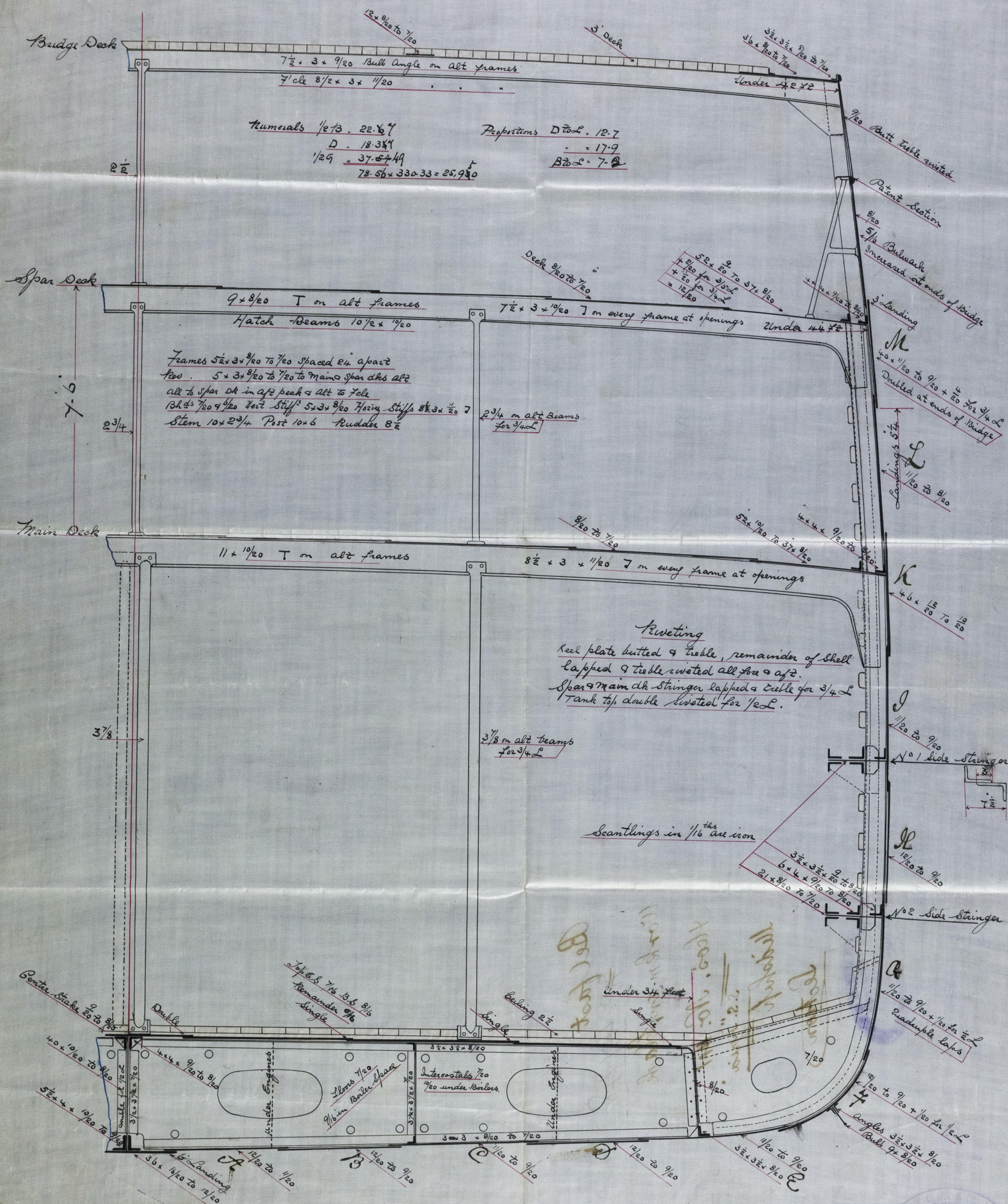
Scale  $\frac{1}{2}$  inch = 1 foot.

<sup>4</sup>  
Cyria

Bel 4<sup>th</sup>/48

Same as Paria (H<sup>7</sup> 140)

Bel. 4723



Shell plating entirely in way of Double bottom excluding  
Garb & Stake to be reduced to  $\frac{1}{20}$  where  $\frac{1}{20}$  & above.



Belfast  
No. 4748  
Workman, Clark  
Hos. No. 141  
S.S. "Tyra"  
Midship  
Section

BEL 67-0149