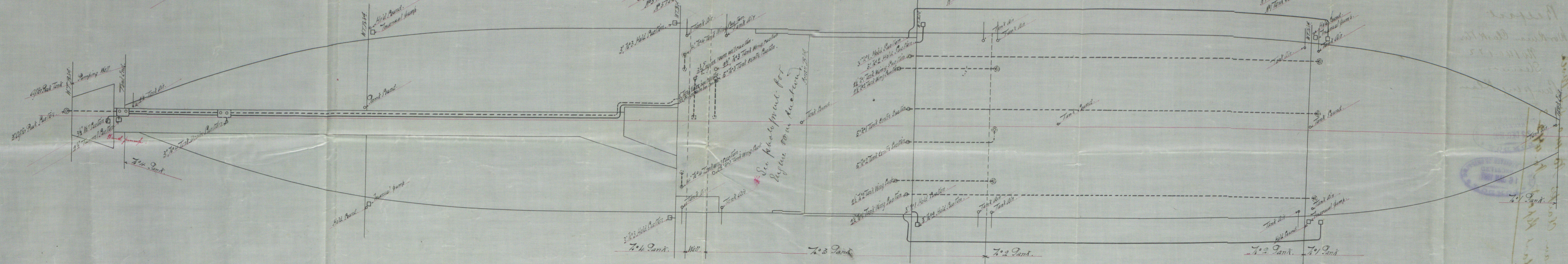
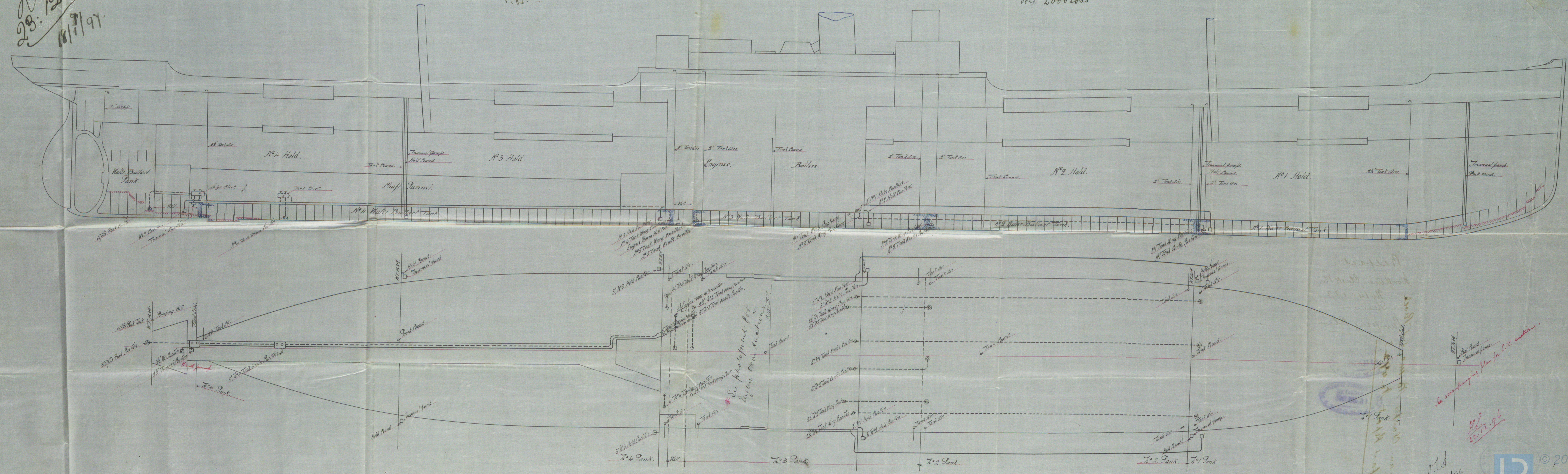


23:12:96
 18/7/97

Pumping Arrangement, Nos 140, 141 & 142, 3.3.96
 Scale 8 inch = 1 foot.

11 D tonnage
 over 2000 tons



See accompanying plan for C.P. center.

23:12:96

M.D.
 21/12/96

1000 2000 3000

Belfast.

Wm Ruman Clark Trs

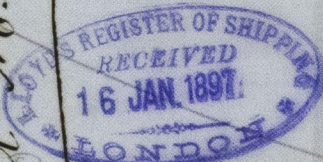
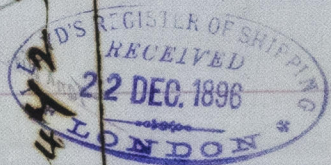
No 140-1 Y2

Slowness

Pumping Room

22. 5. 1840. S. L. P. 1840.

Belfast Report No. 4923



BEL 67-0148

© 2019

Lloyd's Register
Foundation