

Scale $\frac{1}{8}$ in = One foot.

Scale $\frac{1}{8}$ in = One foot.

M. A.
29.7.96

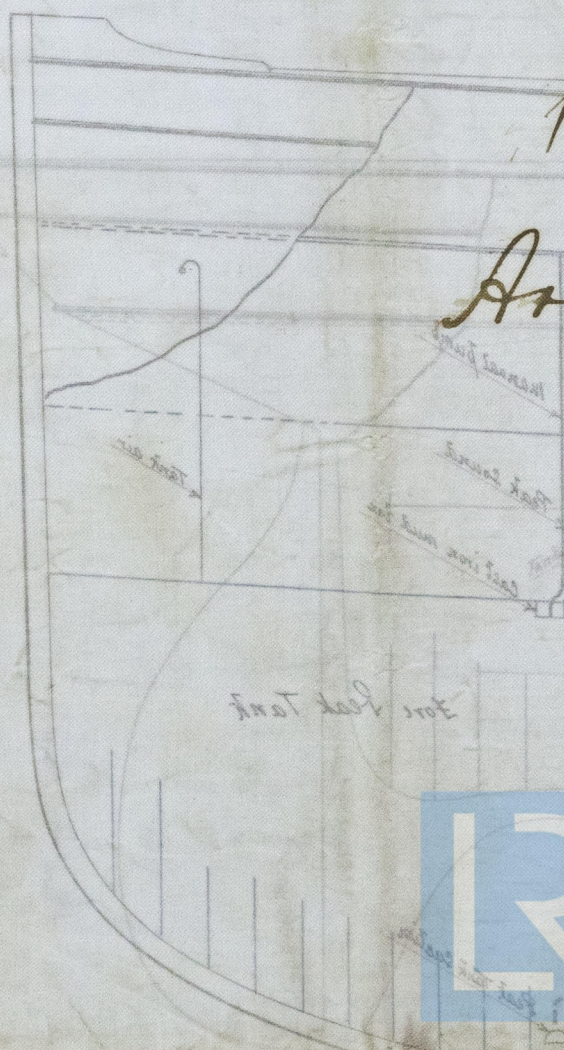


"Kamakura Maru"
Belfast 4710

Workman, Clark
& Co's. No. 134

Pumping.

Arrangements



© 2019

Lloyd's Register
Foundation
BEL67-0068