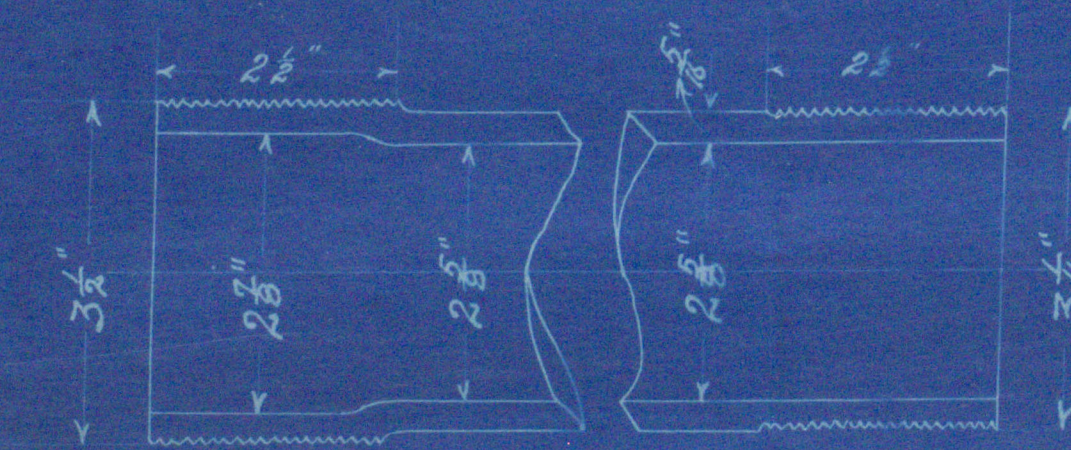
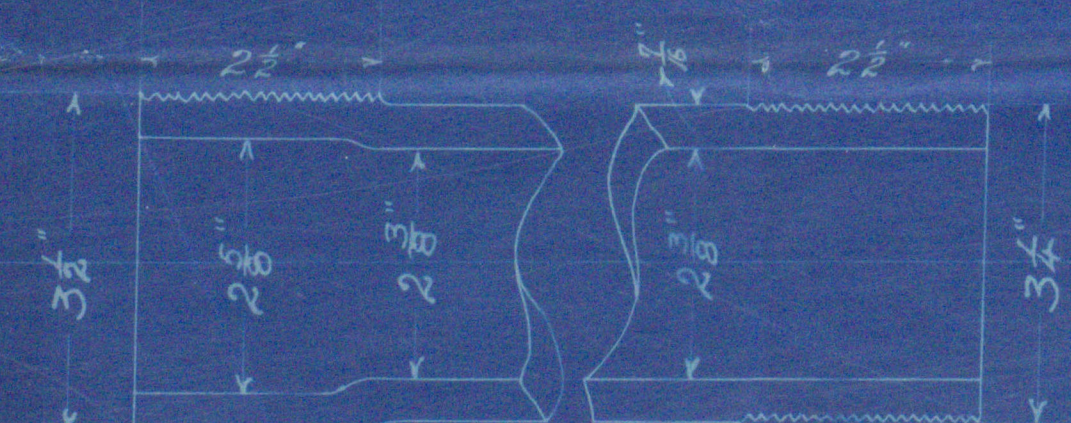


No 2244

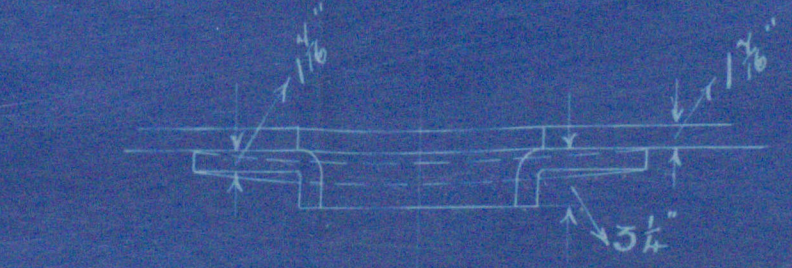
8.4.94



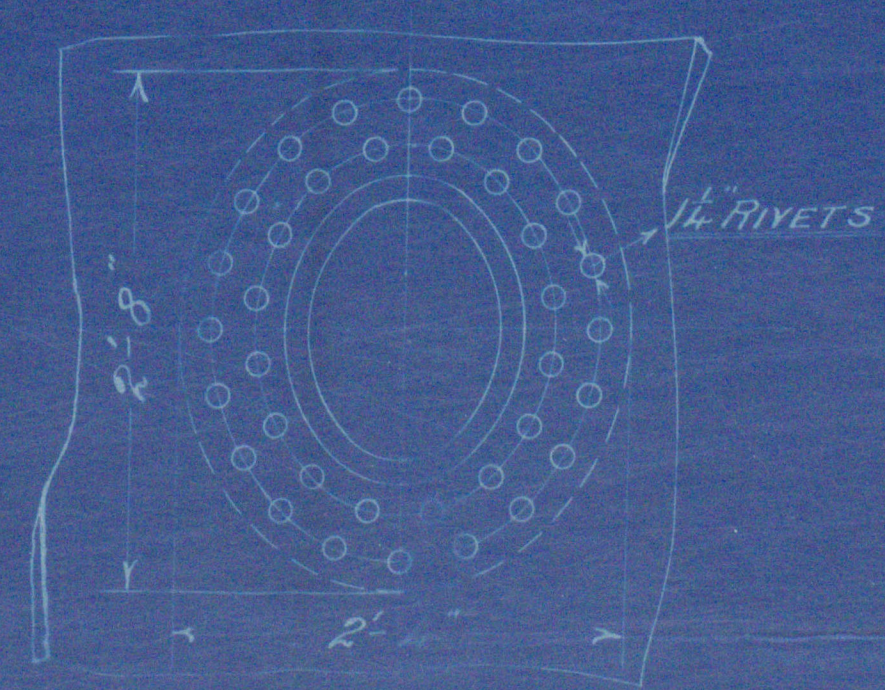
IRON STAY TUBES MARKED 'S'  
3/4 THICK PER INCH



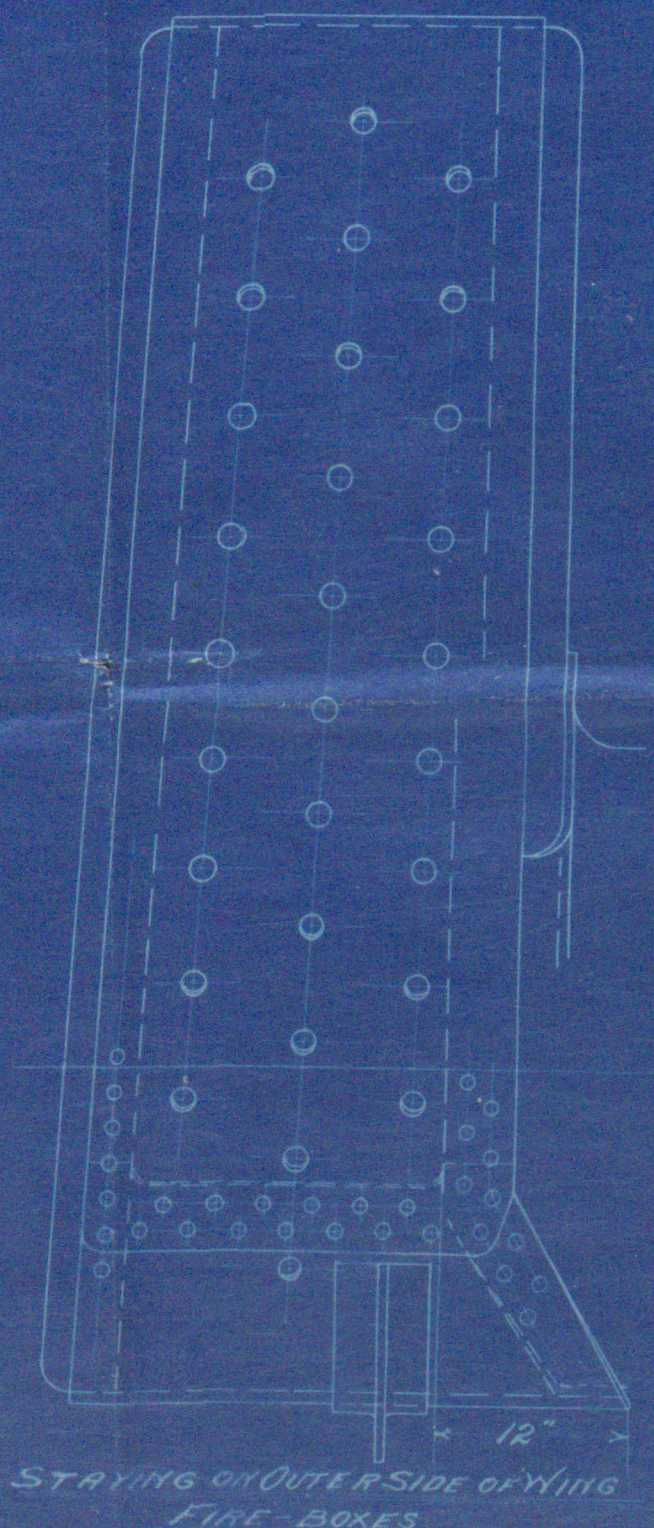
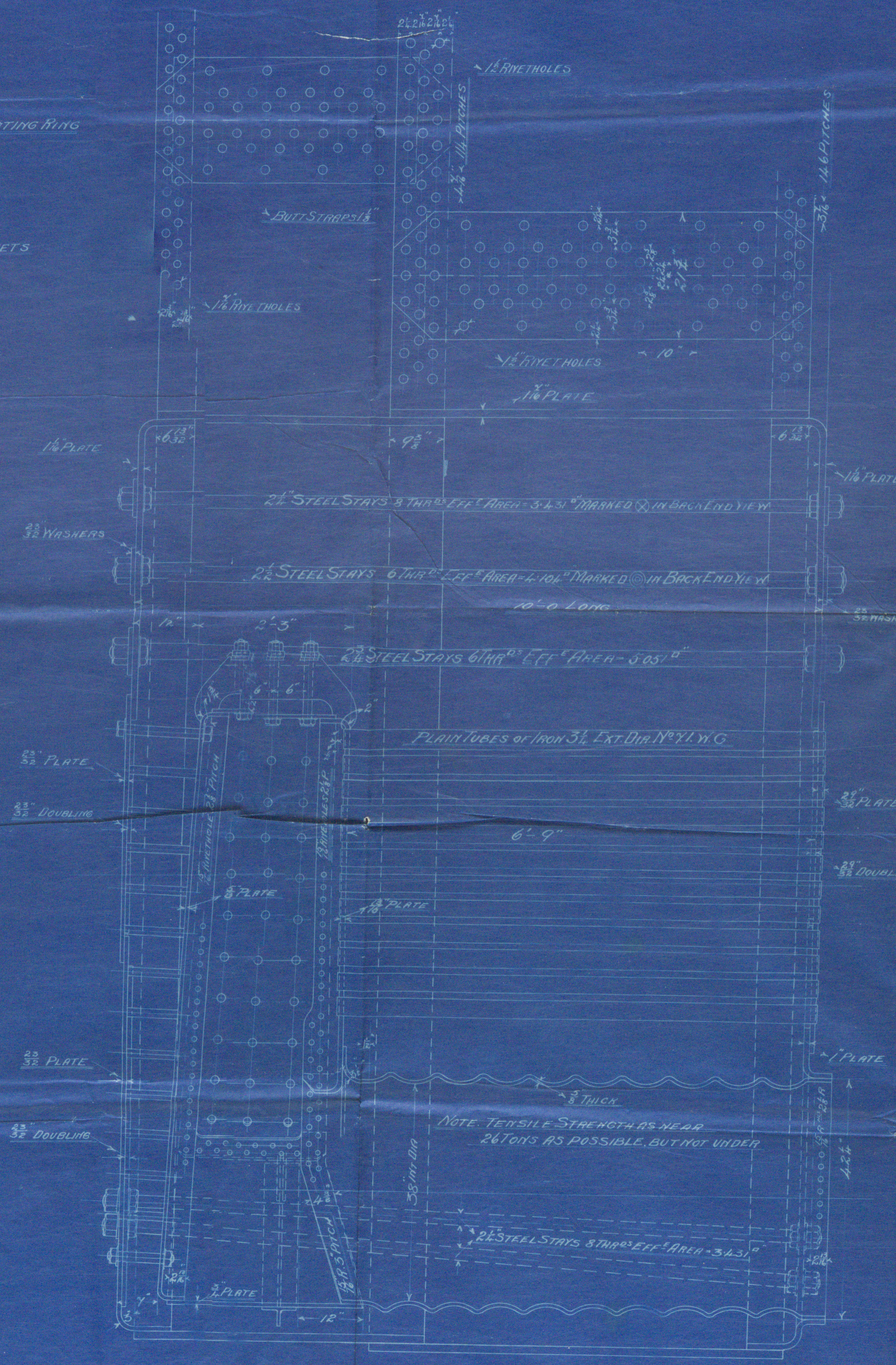
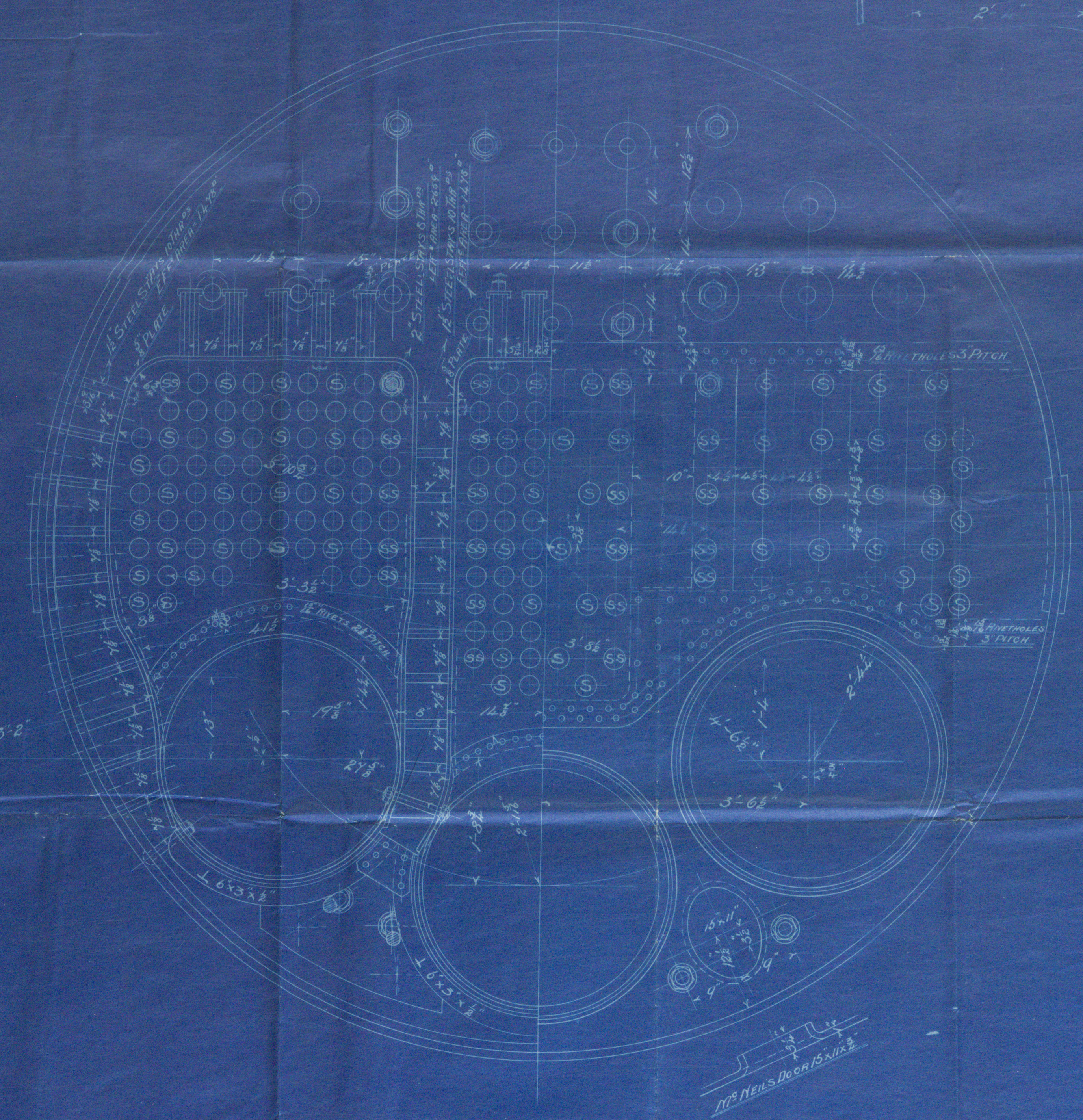
IRON STAY TUBES MARKED 'SS'  
3/4 THICK PER INCH



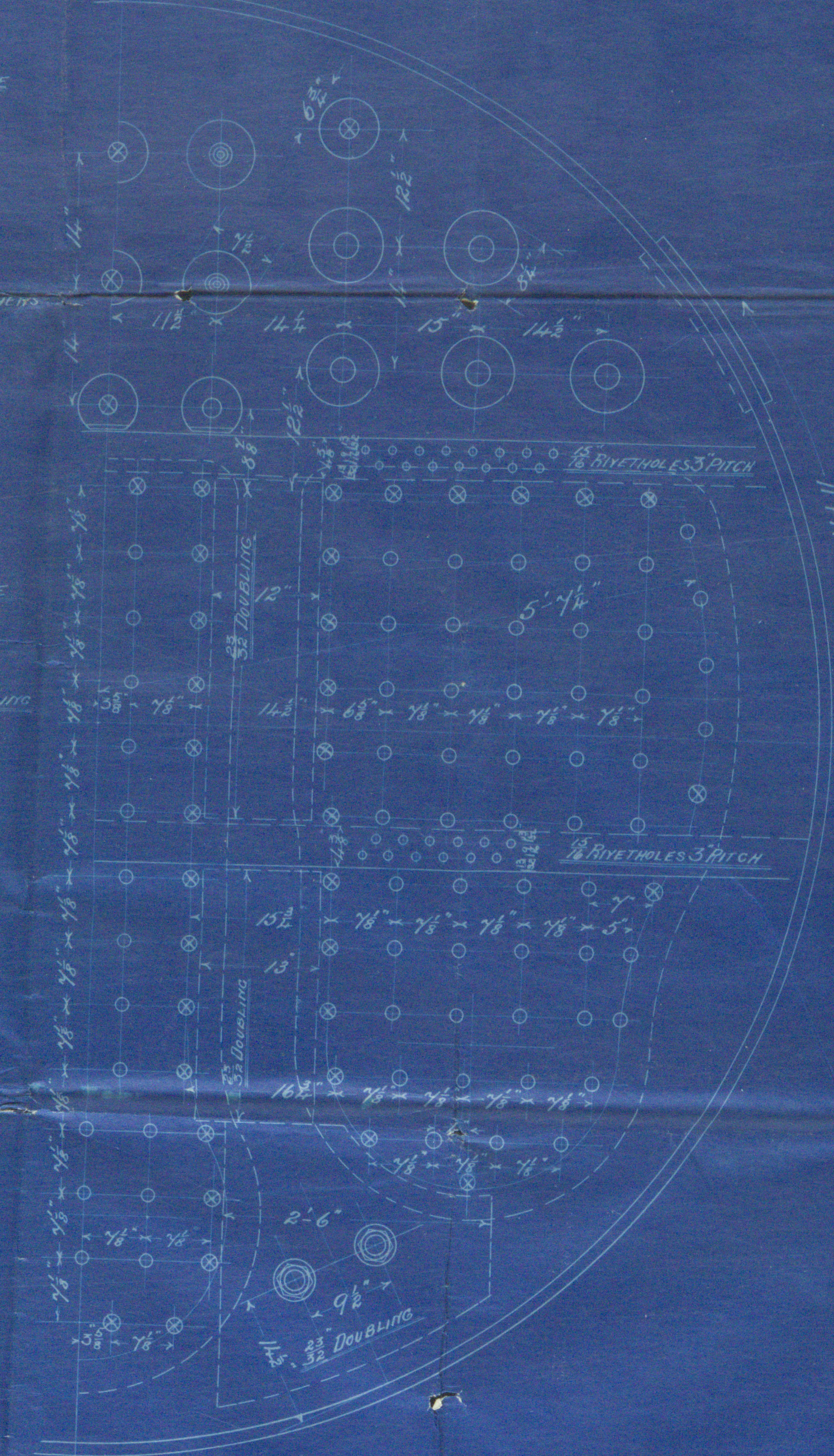
MANHOLE WITH HOLE & COMPENSATING RING  
DOOR 16" x 16" x 3/4"



1/2 RIVETS



STAYING ON INSIDE OF RING  
FIRE-BOXES



**LONGITUDINAL JOINT**  
1 1/2" PLATE 10" PITCH 1 1/2" RIVET HOLES 1/8" BUTT STRAPS  
PERCENTAGE OF PLATE = 85 FACTOR OF SAFETY = 4.5  
" RIVETS = 804 9/16 LLOYD'S 9/16  
" COMB. P. & R. = 88.365  
WORKING PRESSURE BY RULES = 20.7 TONS LLOYD'S 220

**CENTRE CIRCUM. JOINT**  
1 1/2" PLATE 4 1/2" PITCH 1 1/2" RIVET HOLES  
PERCENTAGE OF PLATE = 66.19  
" RIVETS = 68.261

**END CIRCUM. JOINT**  
1 1/2" PLATE 5 1/2" PITCH 1 1/2" RIVET HOLES  
PERCENTAGE OF PLATE = 58.1  
" RIVETS = 53.95

NOTE: ALL RIVET HOLES DRILLED IN PLACE  
TENSILE STRENGTH OF SHELL PLATES 27 TO 32 TONS  
" " " OTHER " 26 TO 30 "

No 134

**STEEL MAIN BOILER**  
13'-6" DIA. 10'-0" LONG. 200 LBS. PRESSURE  
TO PASS B. OF T. LLOYD'S SURVEYS

SCALE 1" = ONE FOOT





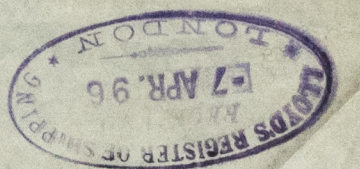
Myers Bros & Co. Clark & Co.

No 134

S. E. Main Boilers

200 No. N. P.

BEL 67-0065



© 2019

Lloyd's Register  
Foundation