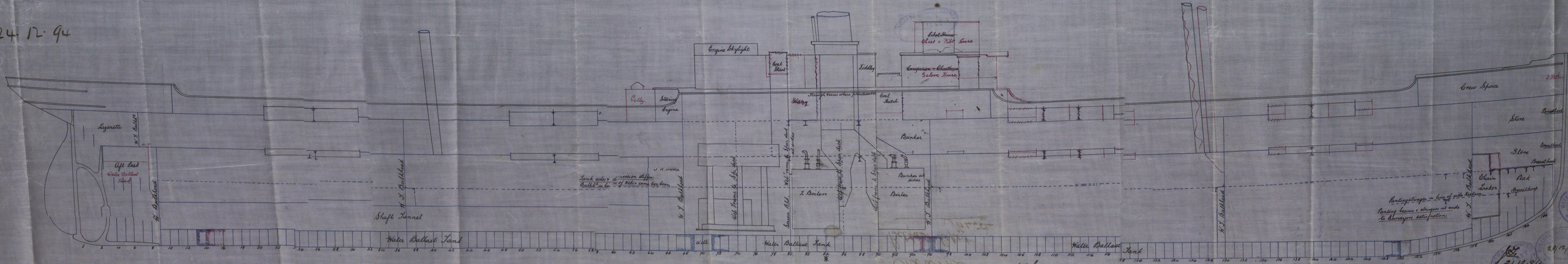


For Enclosure to
Messrs. Lloyd's Surveyors

24. 12. 94

Longitudinal Elevation of N° 114 Screw Steamer
Scale 1/4 inch = 1 foot.



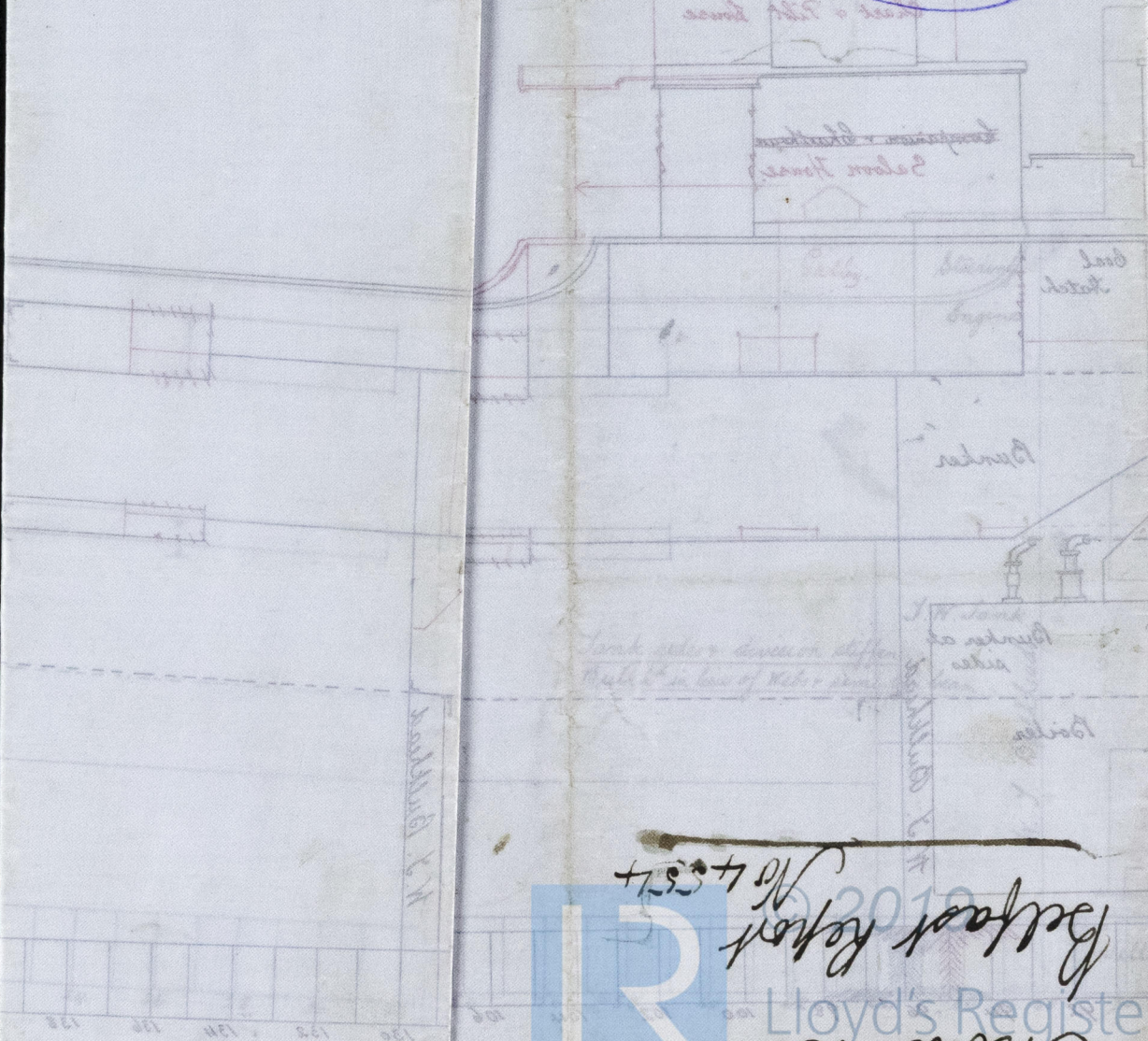
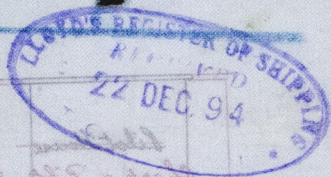
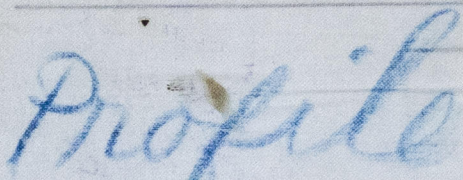
Panting struts in line of side Redwood
Panting beams & struts at ends
to Surveyors satisfaction

21. 12. 94

W. & A. R. LLOYD'S REGISTER
SHIPBUILDERS
3 JAN. 95
ENGINEERS
BELFAST

20/12/94
15005-093

elbourne



Belloc Report
No 4574

Moore