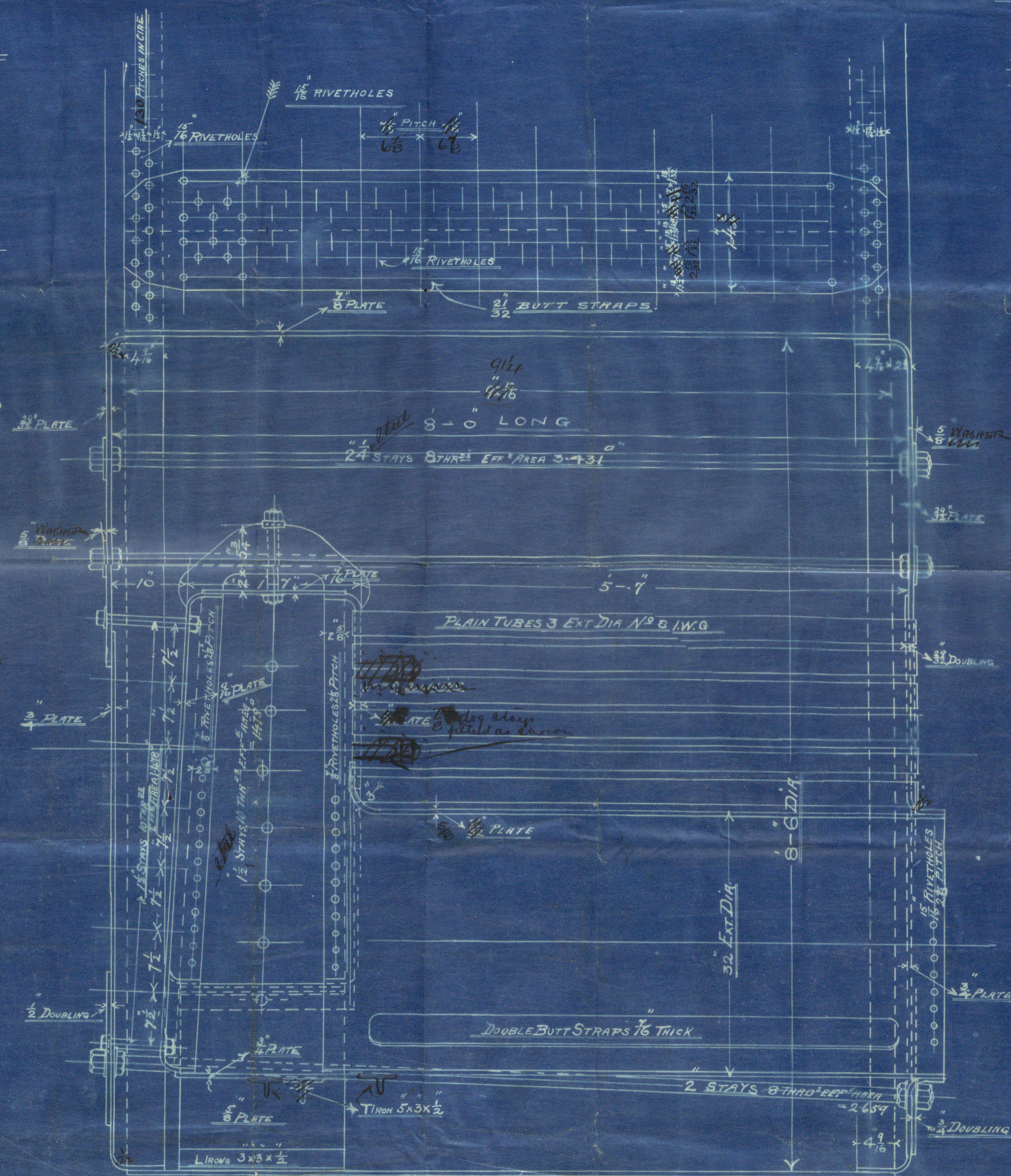
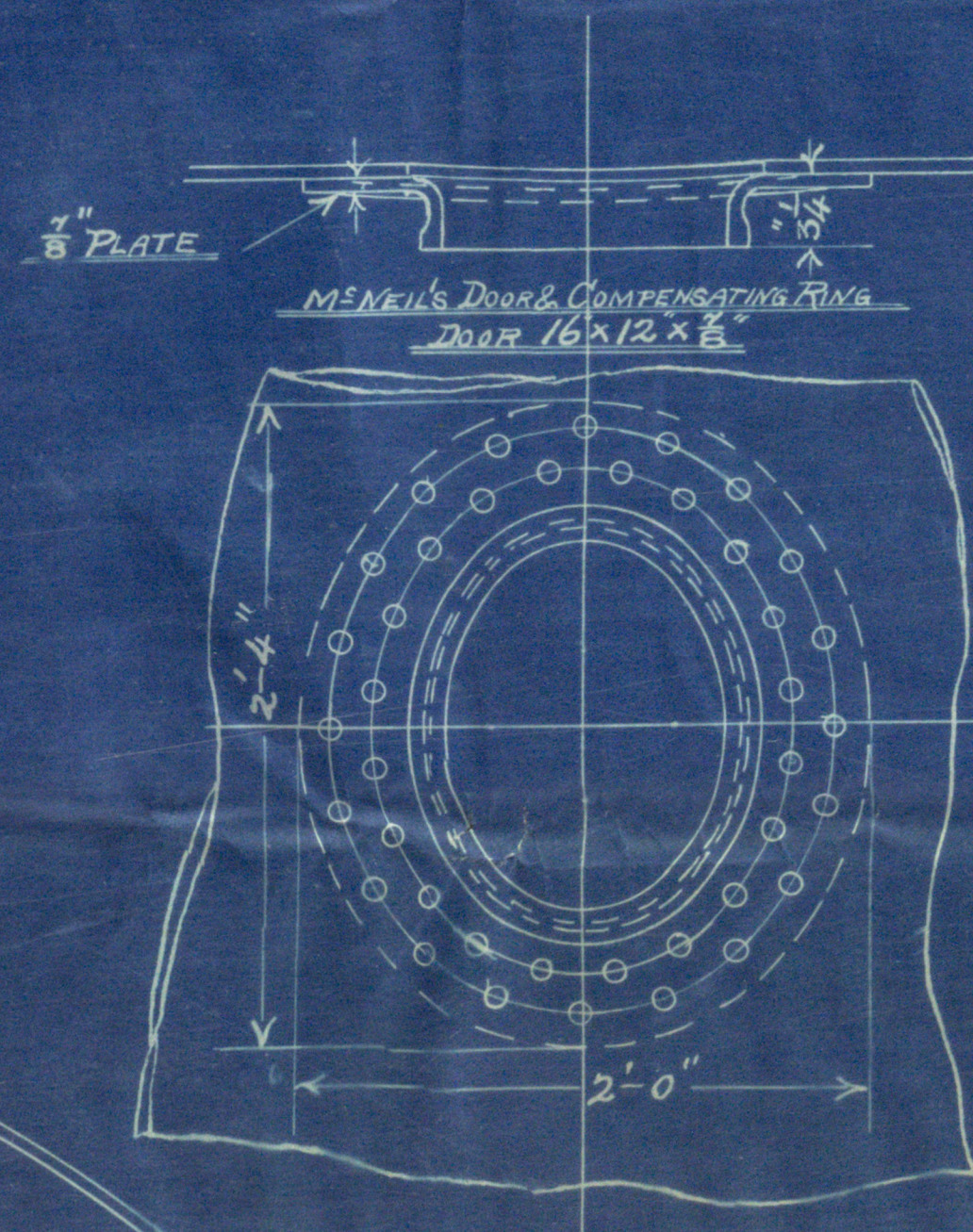
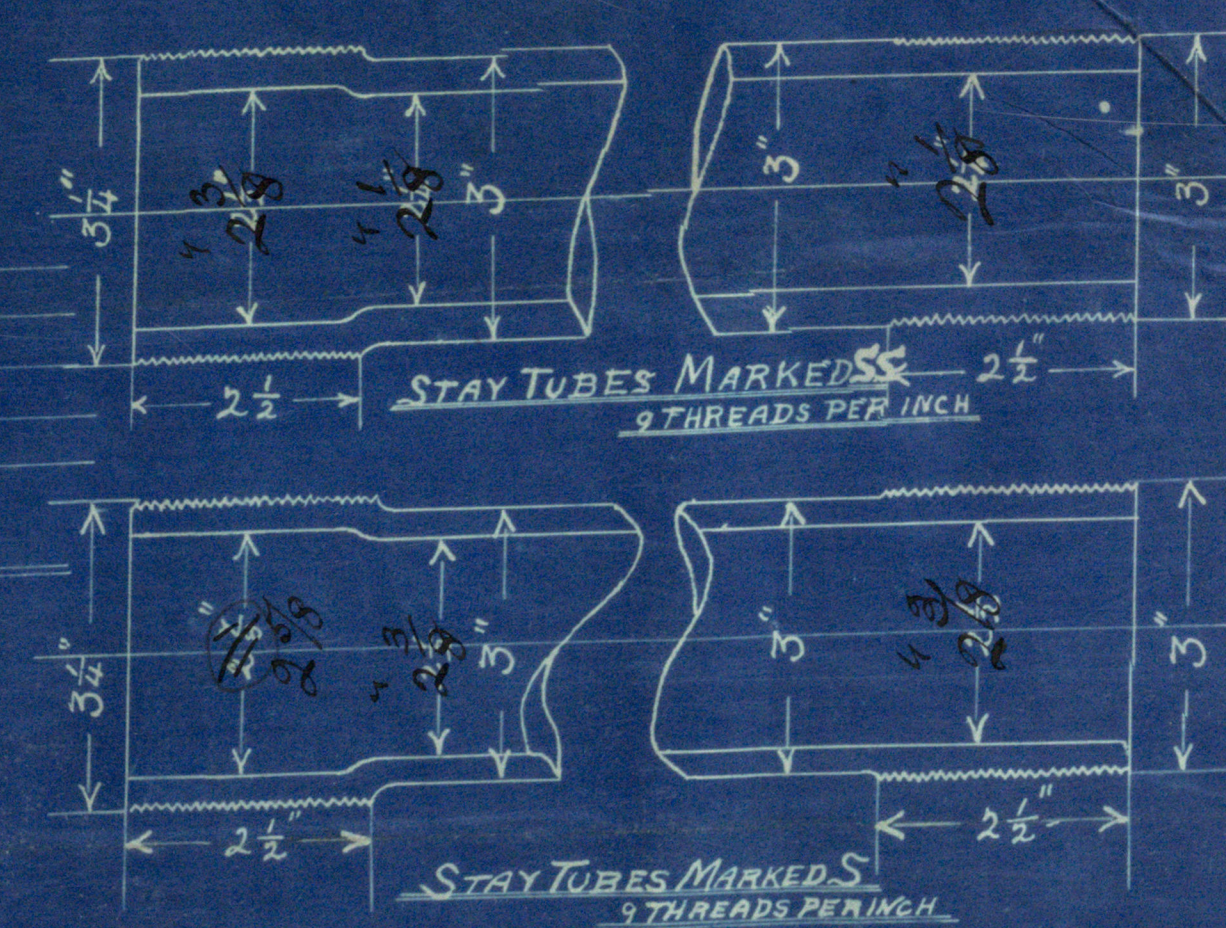


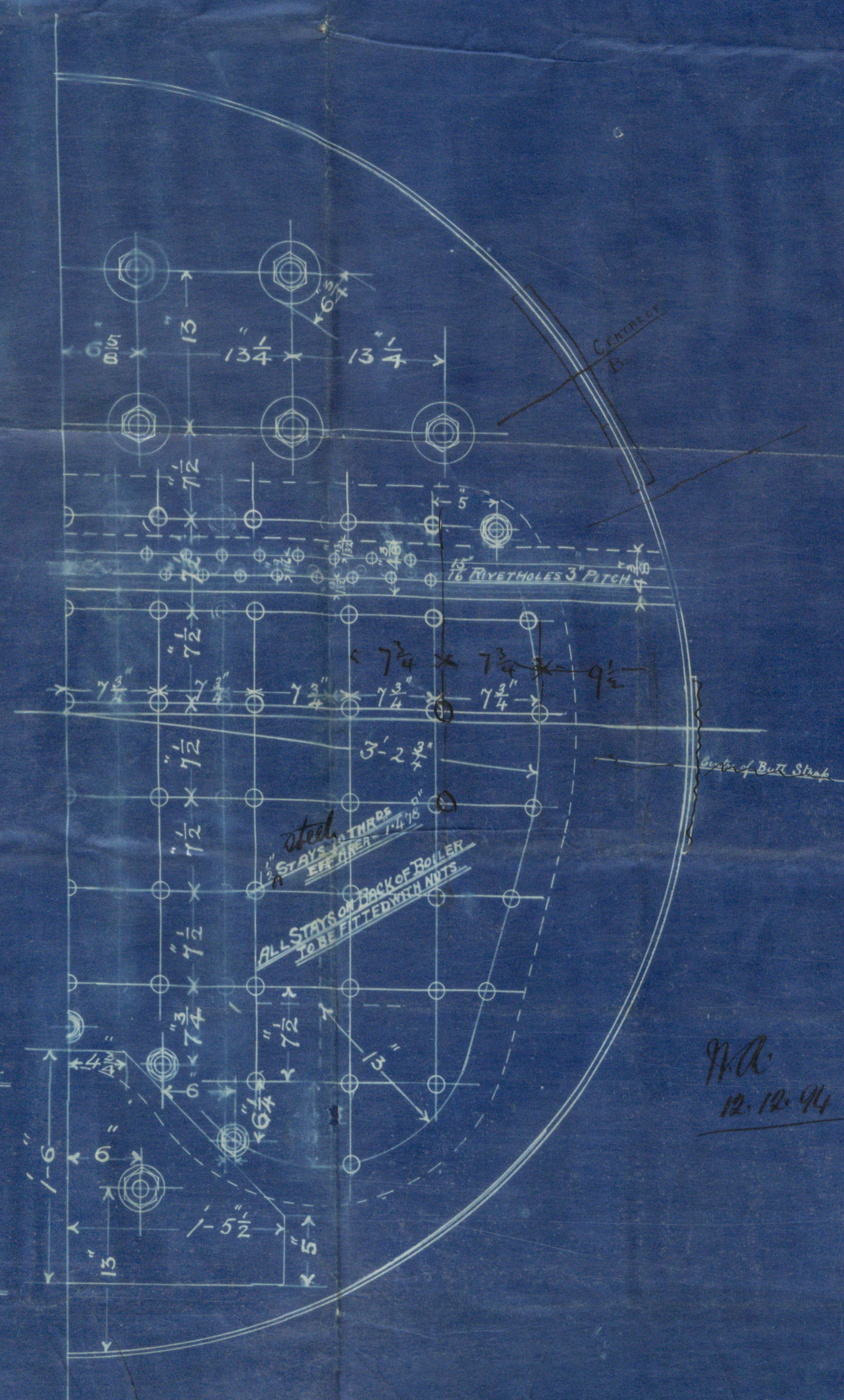
No 1657



LONGITUDINAL JOINT
 PLATE 1/2 RIVET HOLES 1/2 PITCH 1/2
 PERCENTAGE OF PLATE = 86.30 LLOYD'S 86.30
 " RIVETS " = 88.43 B & T RULE
 " " " = 87.34 LLOYD'S
 COMB'D PERCENTAGE = 91.36 B & T
 " " " = 90.15 LLOYD'S
 WORKING PRESS. BY LLOYD'S RULES = 193 LBS
 " " " B & T " = 180.2

FACTOR OF SAFETY 5.

NOTE: ALL RIVET HOLES BORED IN PLACE
 TENSILE STRENGTH OF SHELL 27,330 TONS
 " " " OTHER PLATES 26 TO 30 "



MA. 12.12.94



No 14.

STEEL DONKEY BOILER
 8'-6" DIA 8'-0" LONG 180 LBS PRESSURE
 TO PASS B & T & LLOYD'S SURVEYS

SCALE 1 1/2 INCH TO ONE FOOT



No 111 S. S.

*No 14 Engines
Donkey Boiler*

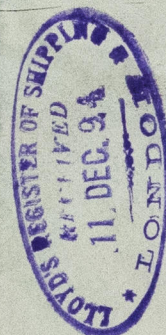
Mount Sirion

Bel. Rpt No 4477

SS no 111



Donkey Boiler



BEL64-0235



© 2019

Lloyd's Register
Foundation