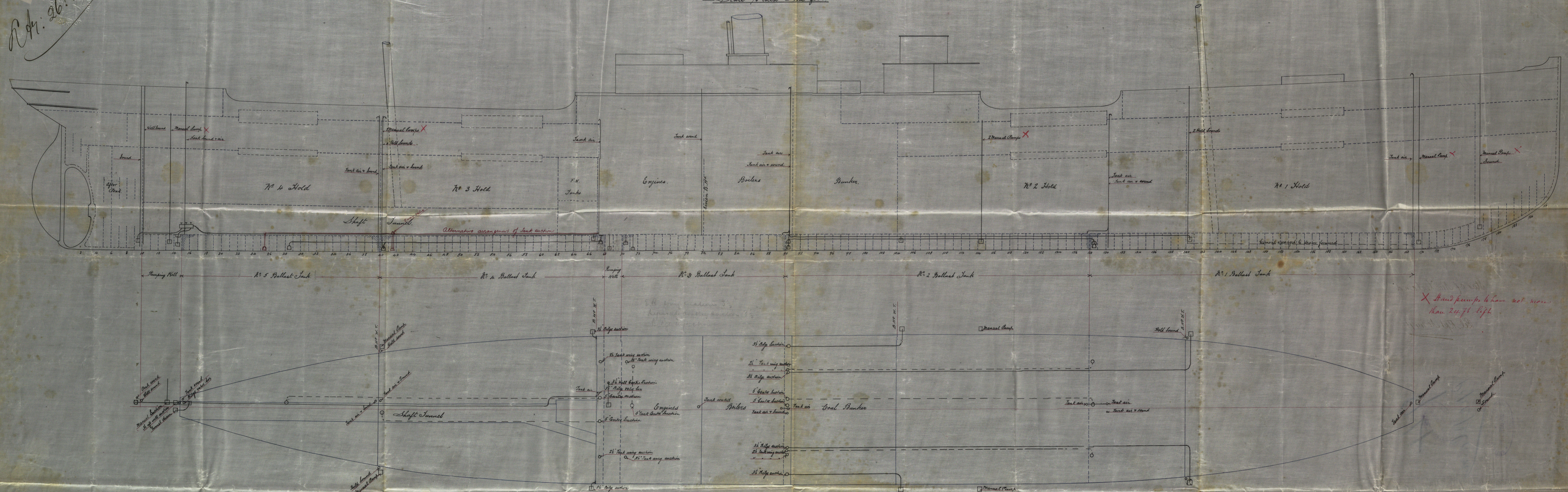


5(2/2)

Adm. 26:10 94

Pumping Arrangement of No 94 S.S.
Scale 1/8 inch = one foot



X Hand pumps to have not more than 24 ft lift

Engine room suction to compress
Bilge suction
3 1/2" separate donkey suction
3 1/2" Centre suction in well
two 3" wing suction, one in
each gutter outside of well.

Approx gross tonnage
4300
H.L.
24.10.94

© 2019

For Enclosure to

Messrs

Lloyd's Register
Surveyors.

X Attached hereto to find my answer
 When 24th Sept

Bel. Rpt No 4473

RECEIVED
25 OCT 1944
U.S. DEPT. OF SHIPPING
F. O. M.

Pipe/Plans

BEL 64-0195(1/2)

© 2019

Lloyd's Register
Foundation