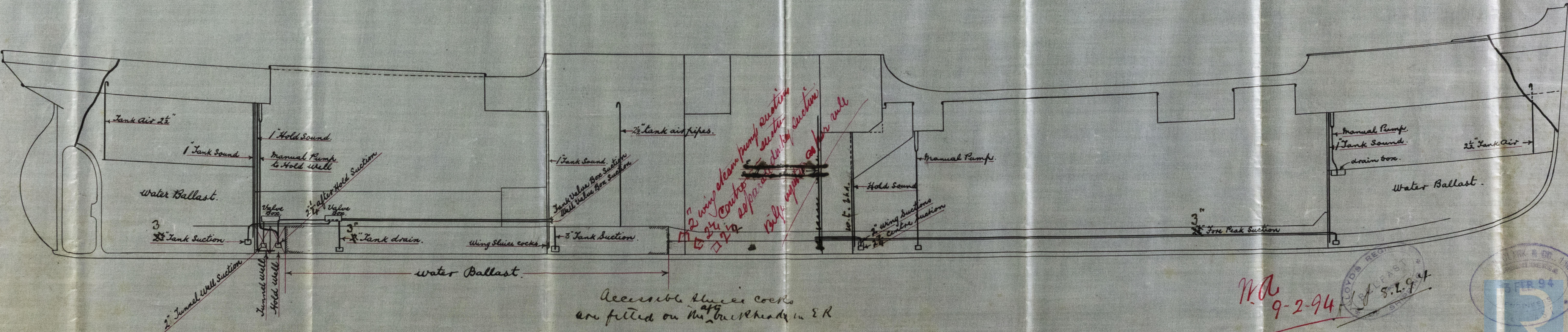


See
 24/10/94

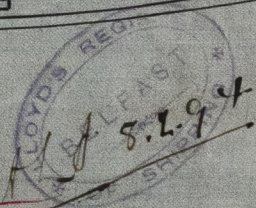
S. S. "Theory"
 — Pumping Arrangement S.S. N° 59. —
 Scale 1/8" = 1 foot.

17/11/94



Accessible sluice cocks
 are fitted on the ^{at} bulkheads in E R

MA
 9-2-94



Lloyd's Register
 Foundation
 BEL63-0129

