

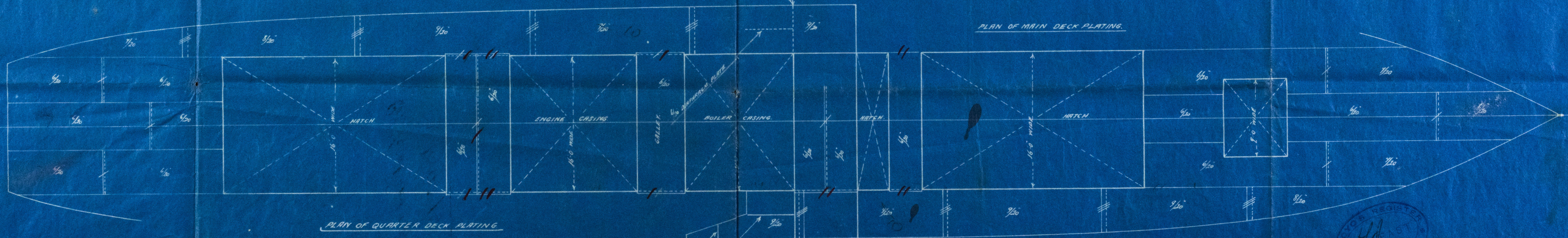
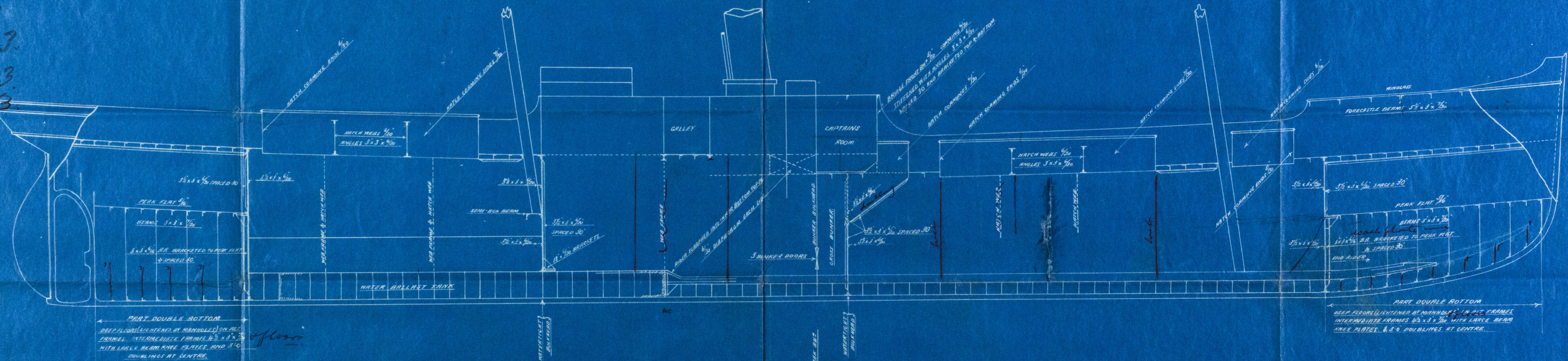
S.S. "Theory"

PROFILE of S.S. 180'-0" x 27'-6" x 14'-6" K.B.

No. 59.

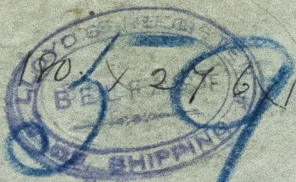
SCALE 1/8" = 1 FOOT.

19.7.93.
7.8.93.
13.11.93.
14.12.93.



RACILWAINE & MACCOLL,
LIMITED.
No 4039
19.7.93
SHIP BUILDERS AND ENGINEERS,
BELFAST.

REGISTERED
19.7.93



"Theory"

Bel. First Ent. Rpt. No 4367

Bel. First Ent. Rpt.
No 4374

Profile

