

20/9/93

STEEL BOILER —FOR— S.S. "ARDANBHAN."

15'-0" DIAM x 10'-6" LONG x 100 LB S

TO PASS LLOYDS

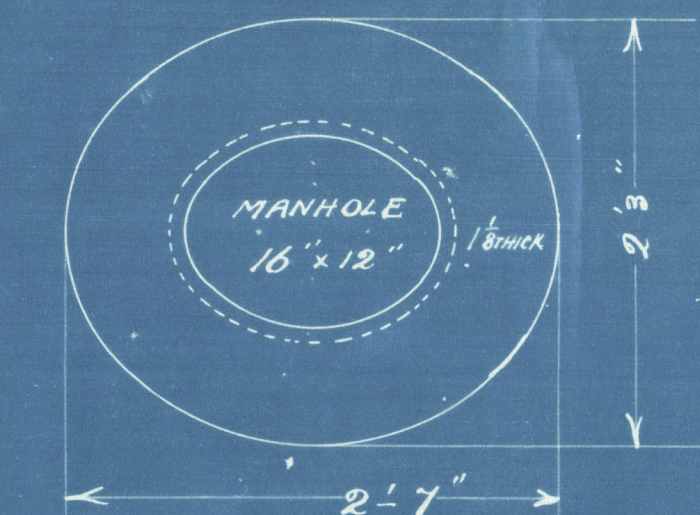
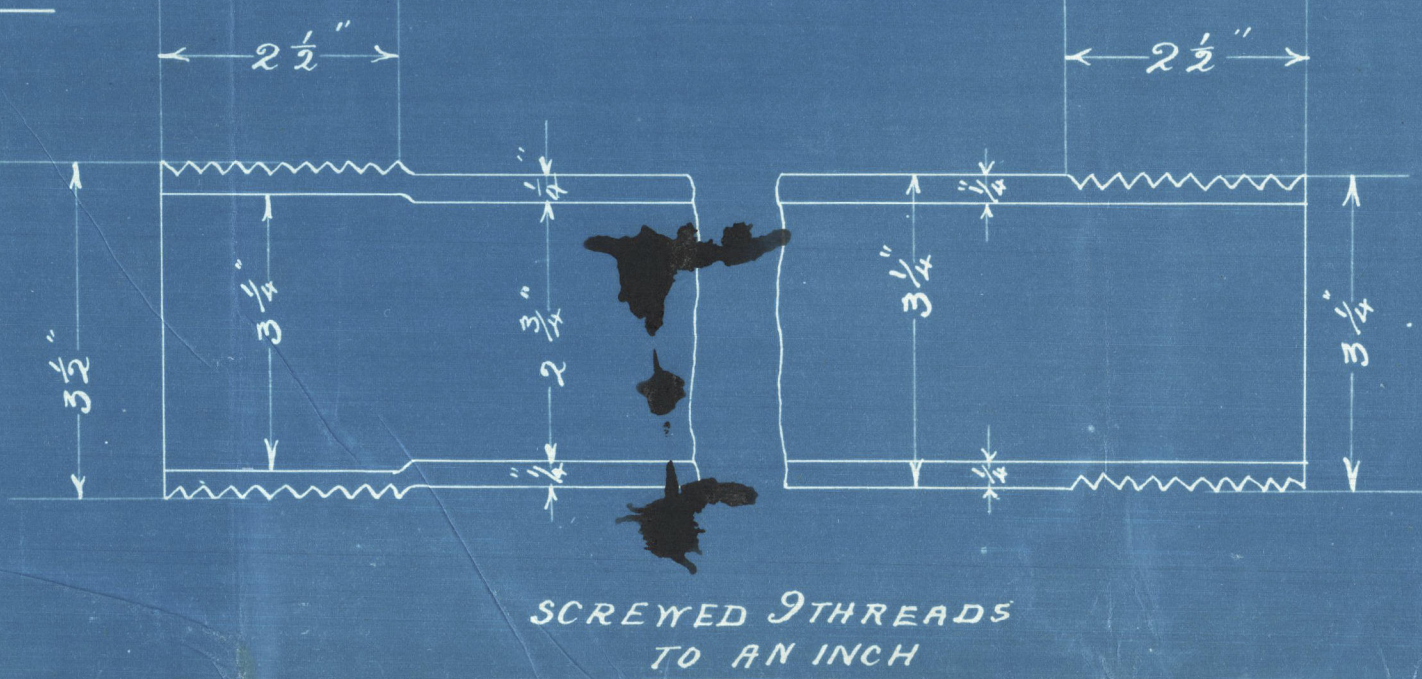
—1 OFF—

HEATING SURFACE

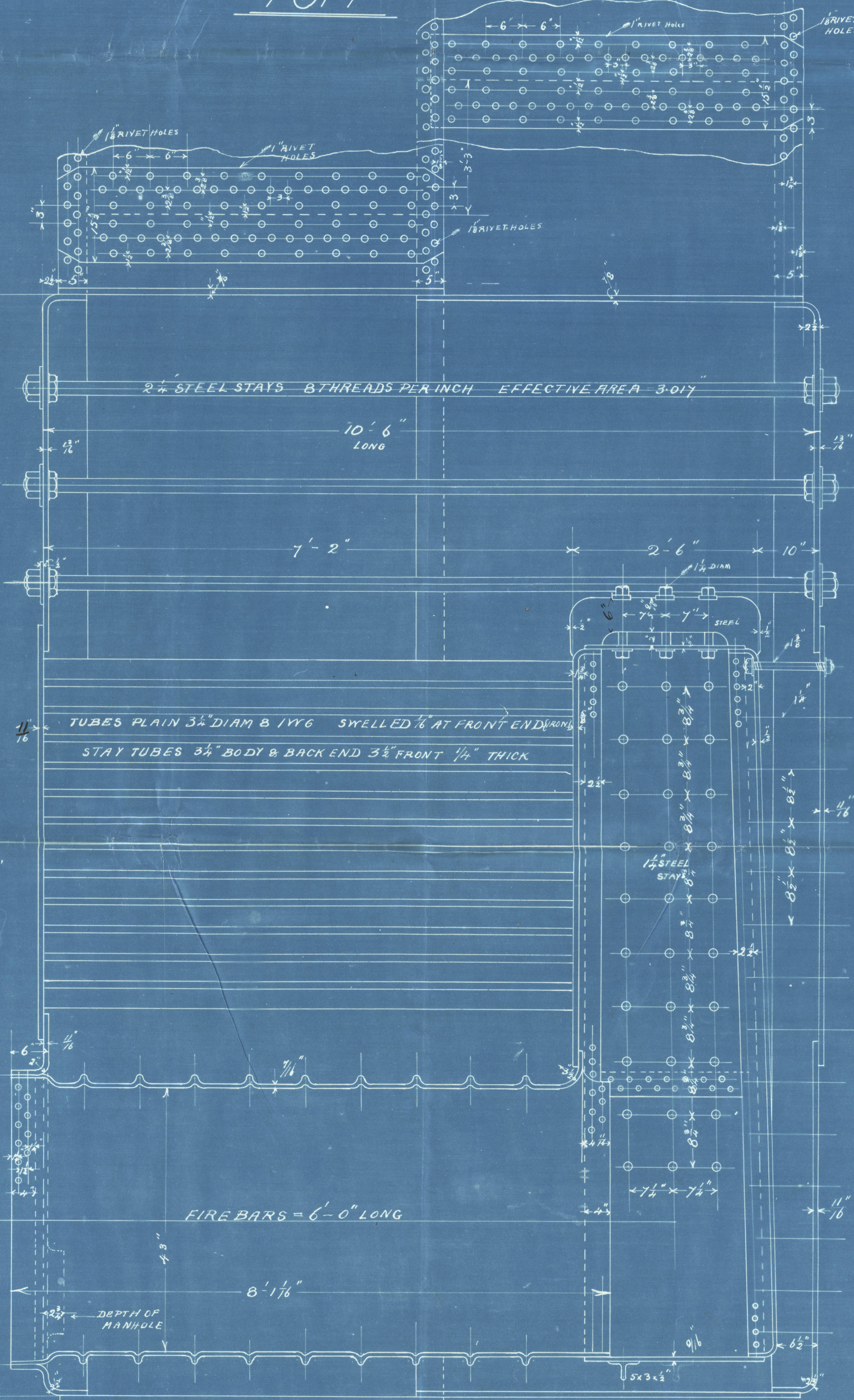
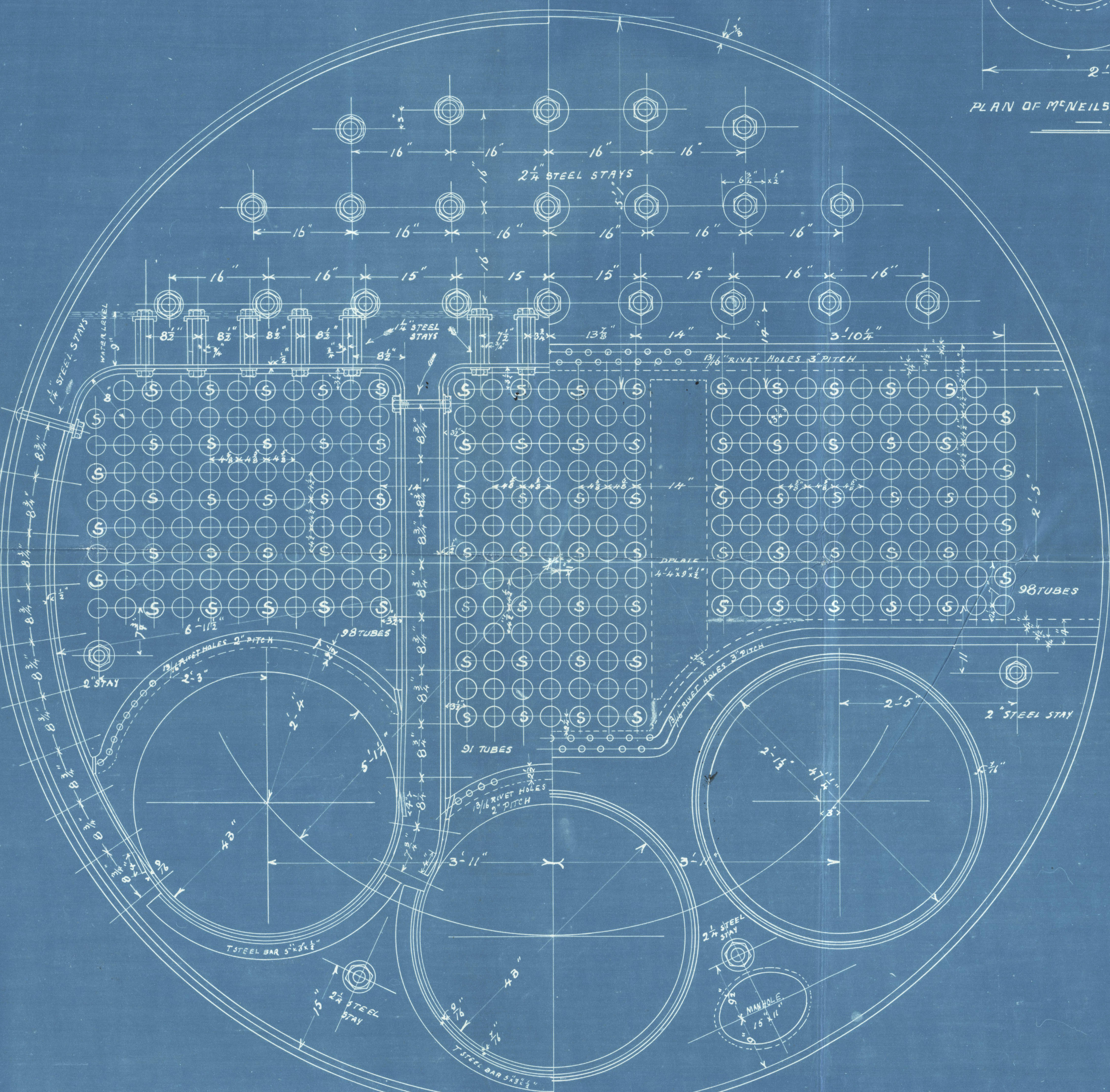
TUBES (Nº 30) = 1757.88
FIREBOX (S&T) Cent = 48.10
" " Side = 79.80
" " Back = 16.50
" " Side = 40.00
BACKTUBE PLATE (Cent) = 13.00
" " (Side) = 32.00
FRONT TUBERATE = 48.75
FURNACES = 82.47
2118.50

GRATE SURFACE = 64.44 sq ft
STEAM SPACE = 411.0 cubic ft (DOME)
HEATING SURFACE = 34.42
TUBE SURFACE = 27.27
GRATE SURFACE = 27.27
HP AT 10 HPT OF GRATE = 644.0
WEIGHT OF WATER = 25 TONS (SALT)

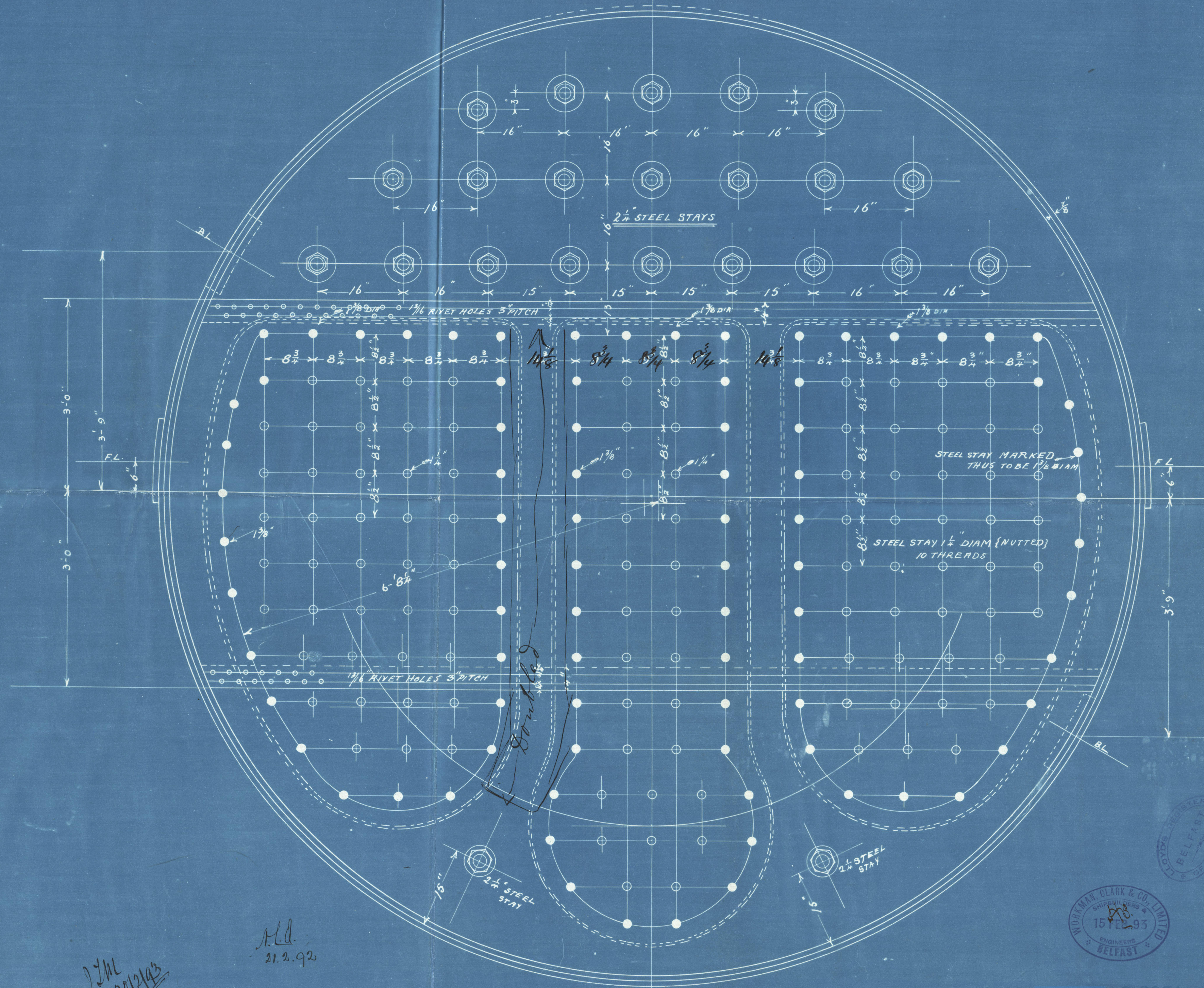
IRON STAY TUBES



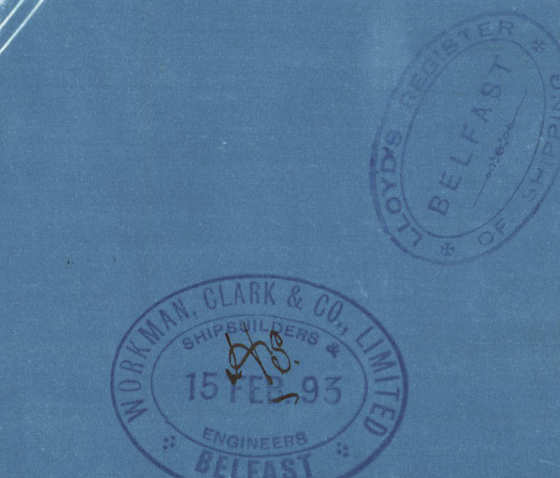
PLAN OF McNEILS DOOR & COMPENSATING RING



LONGITUDINAL JOINT
PERCENTAGE OF PLATE = 61.63
" RIVET = 61.27
SHELL PLATE = 3/8" RIVET HOLES
PITCH = 6" BUTT STRAPS = 2 T.S. = 29 TONS
WORKING PRESSURE BY RULES = 108.3
CIRCUMFERENTIAL JOINTS
PERCENTAGE OF PLATE = 62.5
" RIVET = 61.2
PITCH = 3" RIVET HOLES = 1 1/8"



SCALE 1" = ONE FOOT



(2 of 2)

For Enclosure to

Lloyds.

Messrs.

Ardambham

Bel Rpt 4305

Main



BEL62-0118



© 2021

Lloyd's Register
Foundation

See Lloyd's about
this



Ardanbhan



© 2021

Lloyd's Register
Foundation