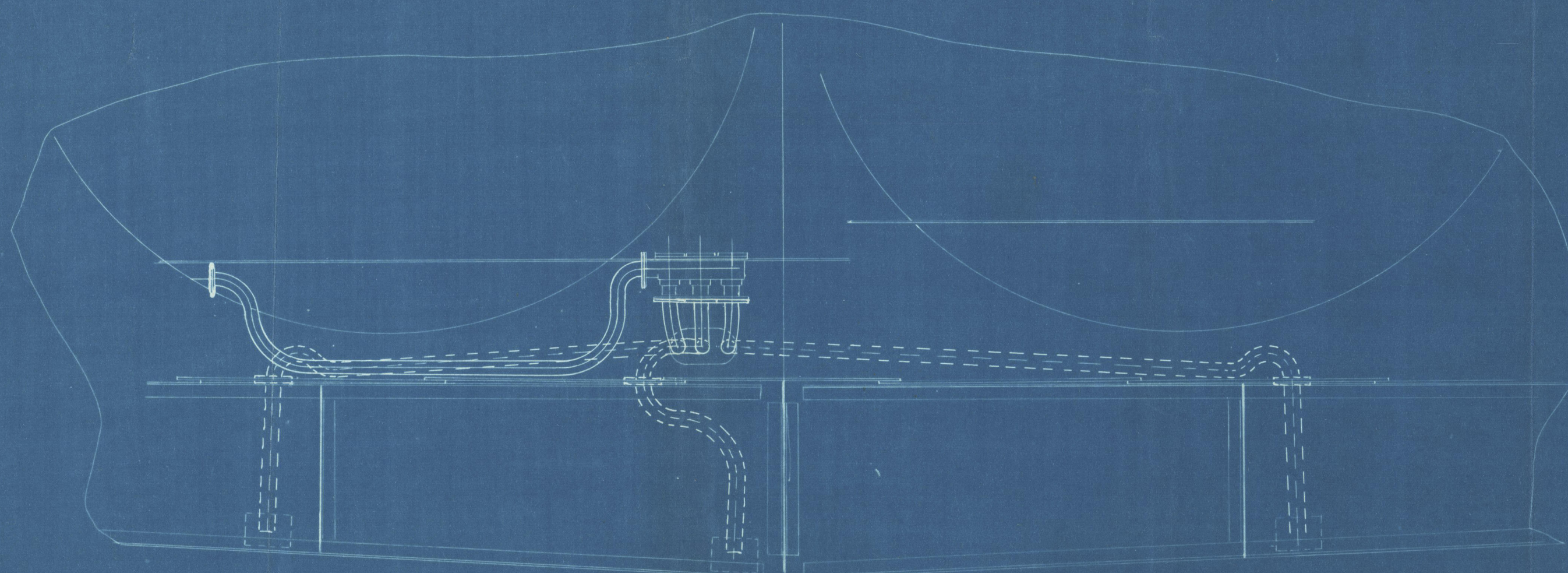
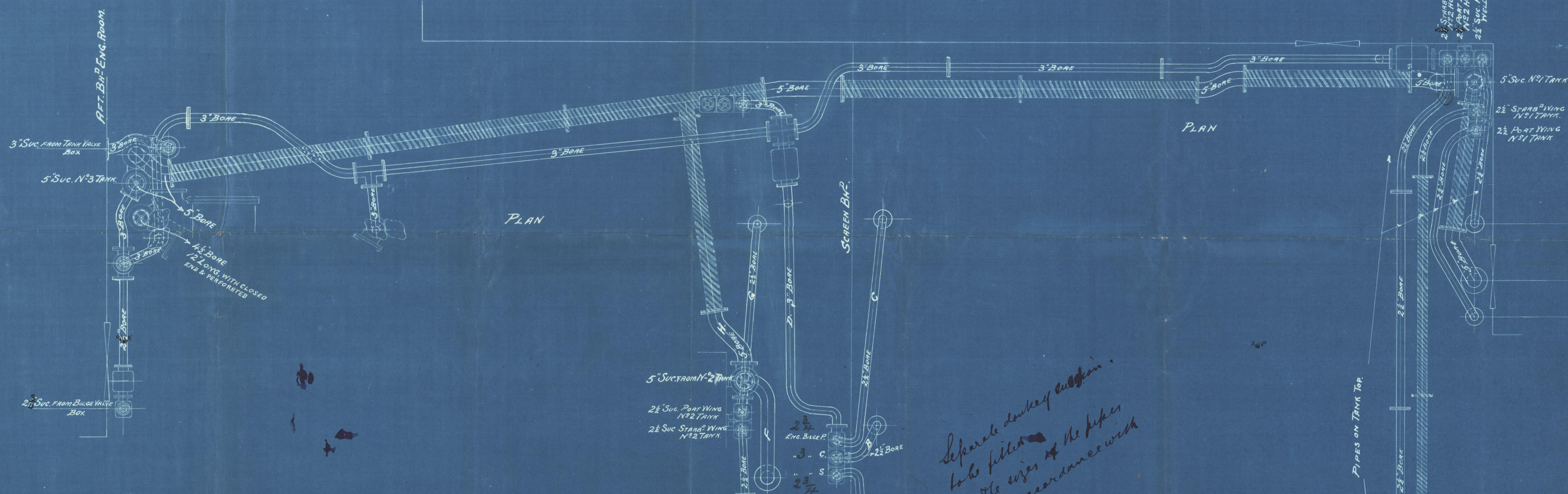
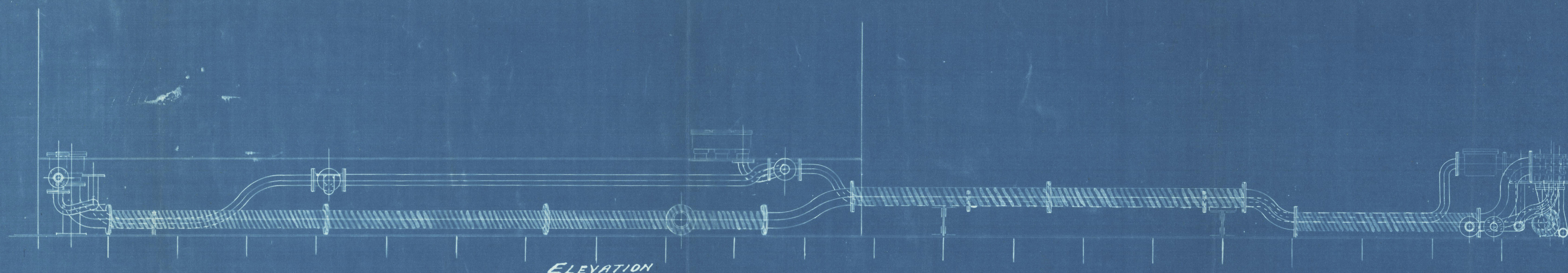
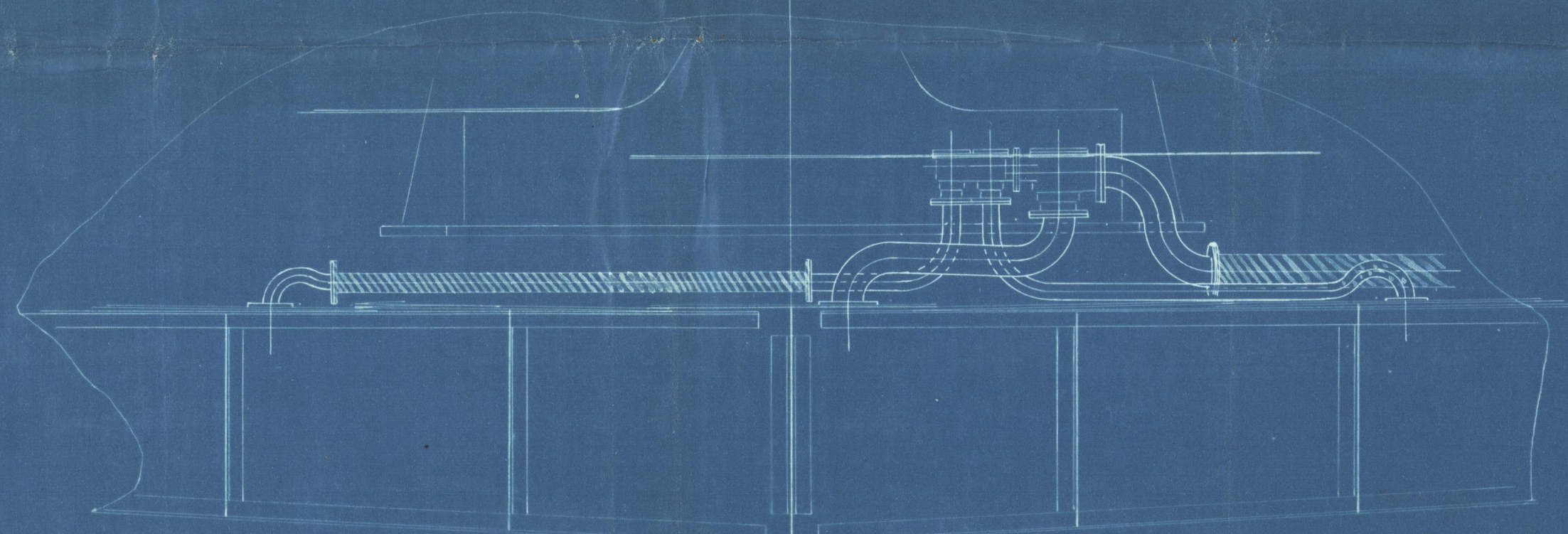


Lib. 201/2193

No 814



ELEVATION OF PIPE A.B.C.&D.
LOOKING FORWARD.



ELEVATION OF PIPES E.F.G.&H.

SCALE 1/4 INCH TO ONE FOOT

Separate drawing of engine to be fitted to the size of the pipes to be in accordance with the rules.

BILGE & BALLAST ARRANGEMENT S.S. No 102. ENG. No 5.

NOTE PIPES SHADED ARE IN CAST IRON.

WEIGHT OF LEAD PIPES

2 1/2 BORE = 28 LBS PER YARD

3 " = 36 " " "

5 " = 5/8" THICK.

4 1/2 " = 5/8" THICK.

No 5



For Enclosure to

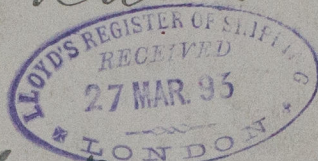
~~Messrs.~~

Lloyds



Bulge and ballast
arrangement

Aradanaher



Bel. Rpt No 426,
See amended arrange
ment, dated 14/4/93
Wm. J. P.

BEL62-0075



© 2021

Lloyd's Register
Foundation