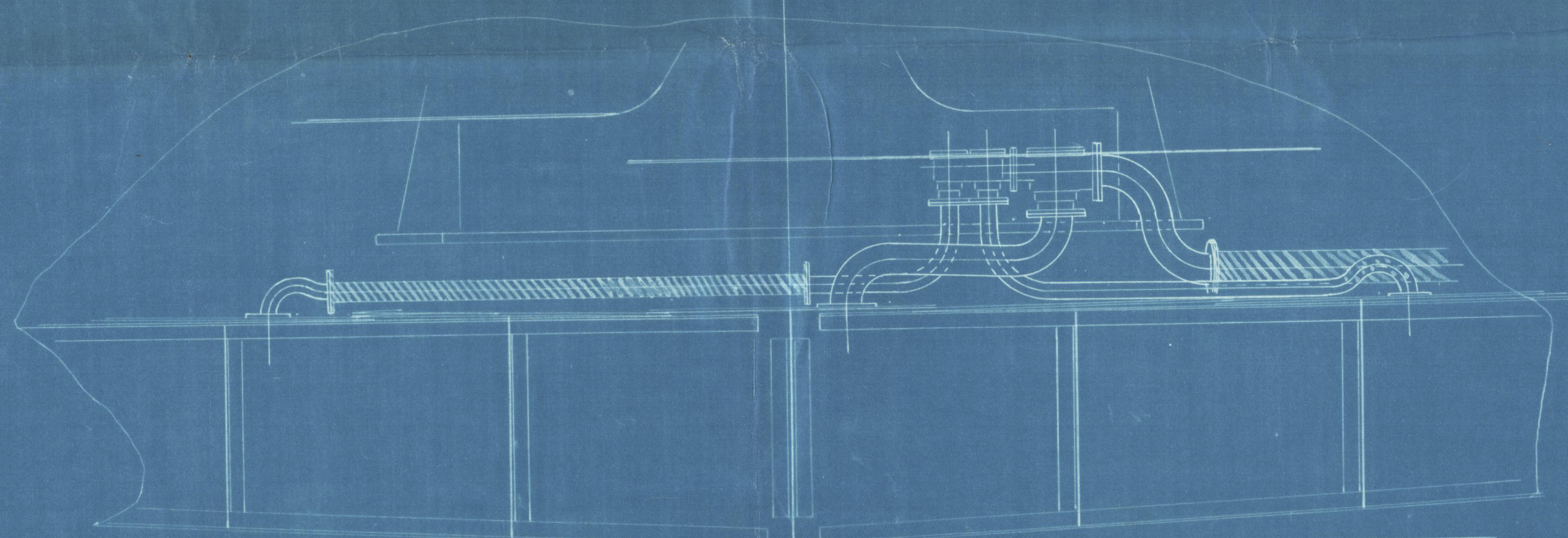
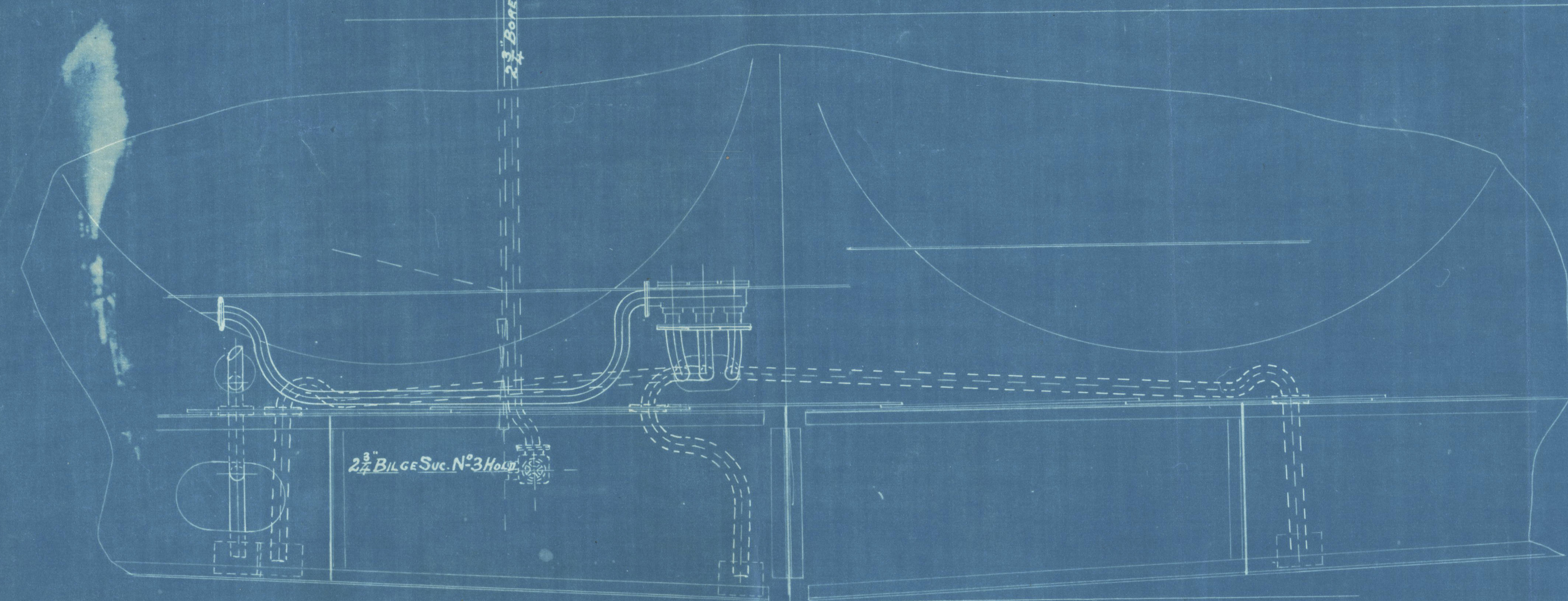
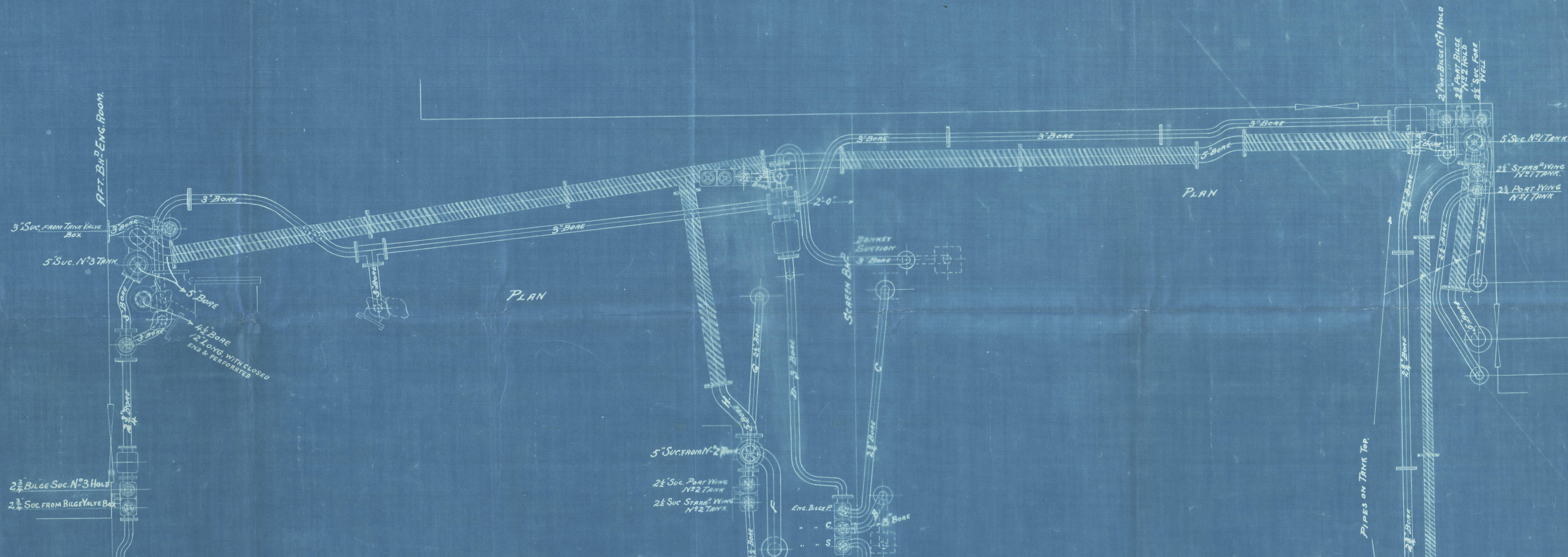
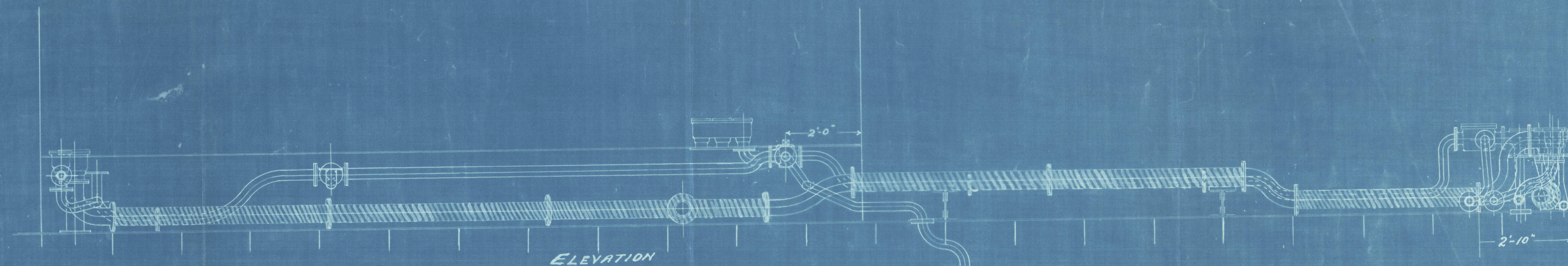


Nº 814



BILGE & BALLAST ARRANGEMENT S.S. Nº 102 ENG. Nº 5.

NOTE PIPES SHADED ARE IN CAST IRON.

WEIGHT OF LEAD PIPES

2 1/2" BORE	= 28 Lbs PER YARD
3" "	= 36 " "
5" "	= 5/8" THICK
4 1/2" "	= 5/8" THICK
2 3/4" "	= 32 Lbs PER YARD
2" "	= 20 Lbs PER YARD

SCALE 1/2 INCH TO ONE FOOT

Nº 5



M.A.
9.6.53

No 102 Rs. 5 E

P.A. in E.R.

as amended

"Arbandhu"

Bel. First Entry Rpt

No 4261

BEL62-0073



© 2021

Lloyd's Register
Foundation