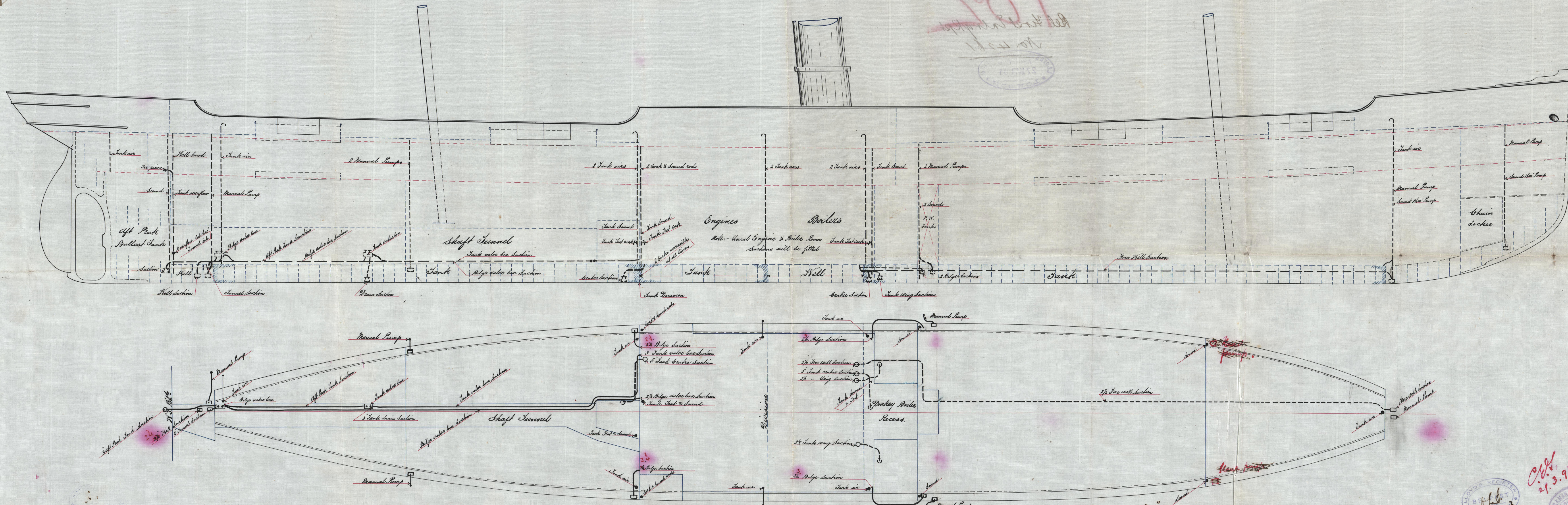


Dec. 30/3/93

Pumping Arrangement No. 102. S.S.

Scale 1/8 inch = 1 foot.



All sections to be of size in Sect 38 of Stat Rules. V.R. 1500 to 2000 } May sections in holds 2 3/4"

Length 279.75
4 W.L. bulkheads



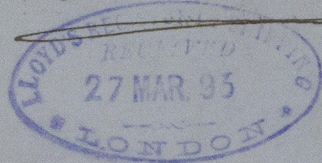
For Enclosure to

Messrs. *Lloyd's Surveyors.*

BEL62-0072

Pumping arrangement
Andandhu

Bel First Entry Rpt
No. 4261



© 2021

Lloyd's Register
Foundation