

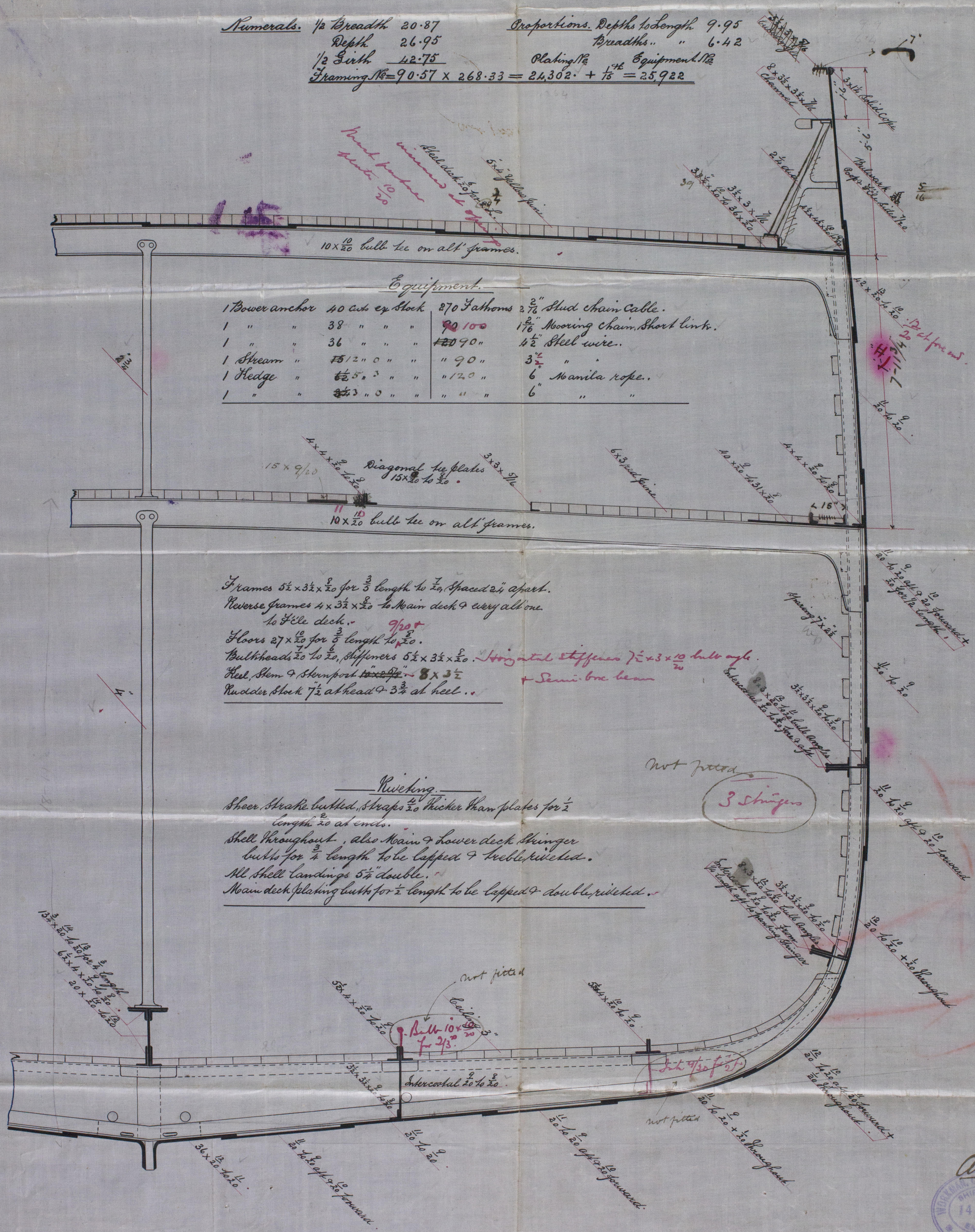
19. 1. 92

Midship Section of No. 97. Sailing Ship.

To Class 100 A.I. Steel.

Scale 1/2 inch = one ft.

Numerals. 1/2 breadth 20.87
 Depth 26.95
 1/2 Girth 42.75
 Proportions. Depth to length 9.95
 Breadth " " 6.42
 Plating 1/2 Equipment 1/2
 Framing No. = $90.57 \times 268.33 = 24,302. + \frac{1}{15} = 25,922$

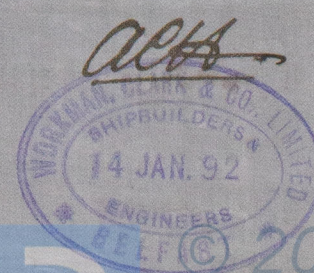


Equipment.

1 Power anchor	40 cwt. ex. stock	270 Fathoms	2 3/4" Stud chain cable.
1 " "	38 " " "	90 100	1 3/4" Mooring chain, short links.
1 " "	36 " " "	90	4 1/2" Steel wire.
1 Stream "	5 1/2 " " "	90	3 1/2" "
1 Hedge "	6 1/2 " " "	120	6 Manila rope.
1 " "	3 1/2 " " "	"	6 " "

Frames 5 1/2 x 3 1/2 x 20 for 3/5 length to 7, spaced 2 1/2' apart.
 Reverse frames 4 x 3 1/2 x 20 to main deck & every alt. one.
 to file deck. 9/20
 Floors 27 x 20 for 3/5 length to 20.
 Bulkheads 20 to 20, stiffeners 5 1/2 x 3 1/2 x 20.
 Keel, Stem & Sternpost 8 x 3 1/2.
 Rudder stock 7 1/2 at head & 3 3/4 at heel.

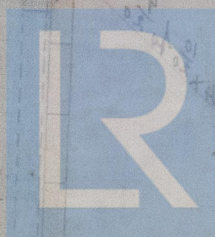
Riveting.
 Sheer, Strake, butted, Straps 20 thicker than plates for 1/2 length 20 at ends.
 Shell throughout, also Main & lower deck stringer butts for 1/2 length to be lapped & treble riveted.
 All shell landings 5 1/2" double.
 Main deck plating butts for 1/2 length to be lapped & double riveted.



BEL61-0090

4 Lauriston 4

Belfast 4198



© 2020

Lloyd's Register
Foundation