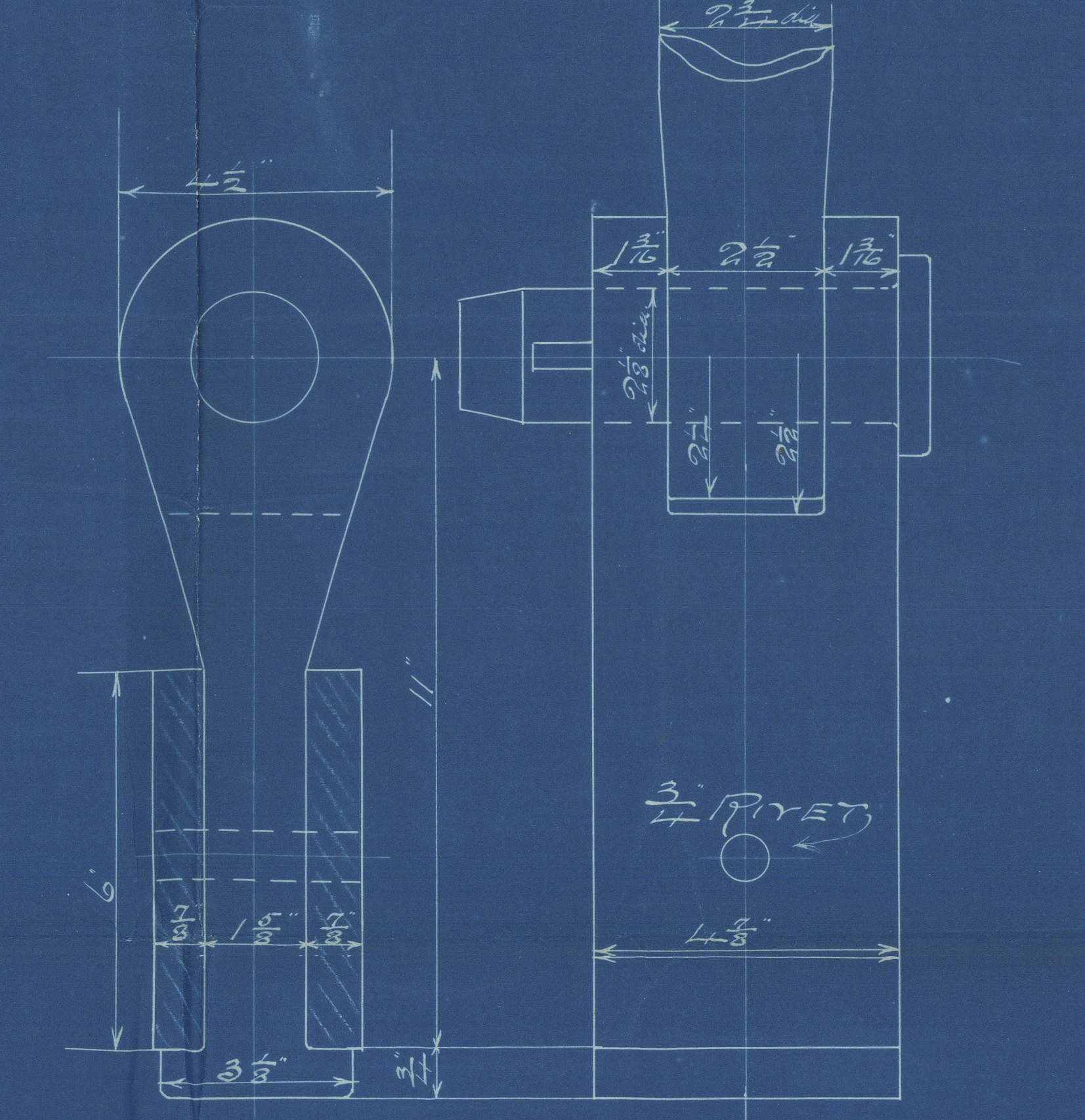
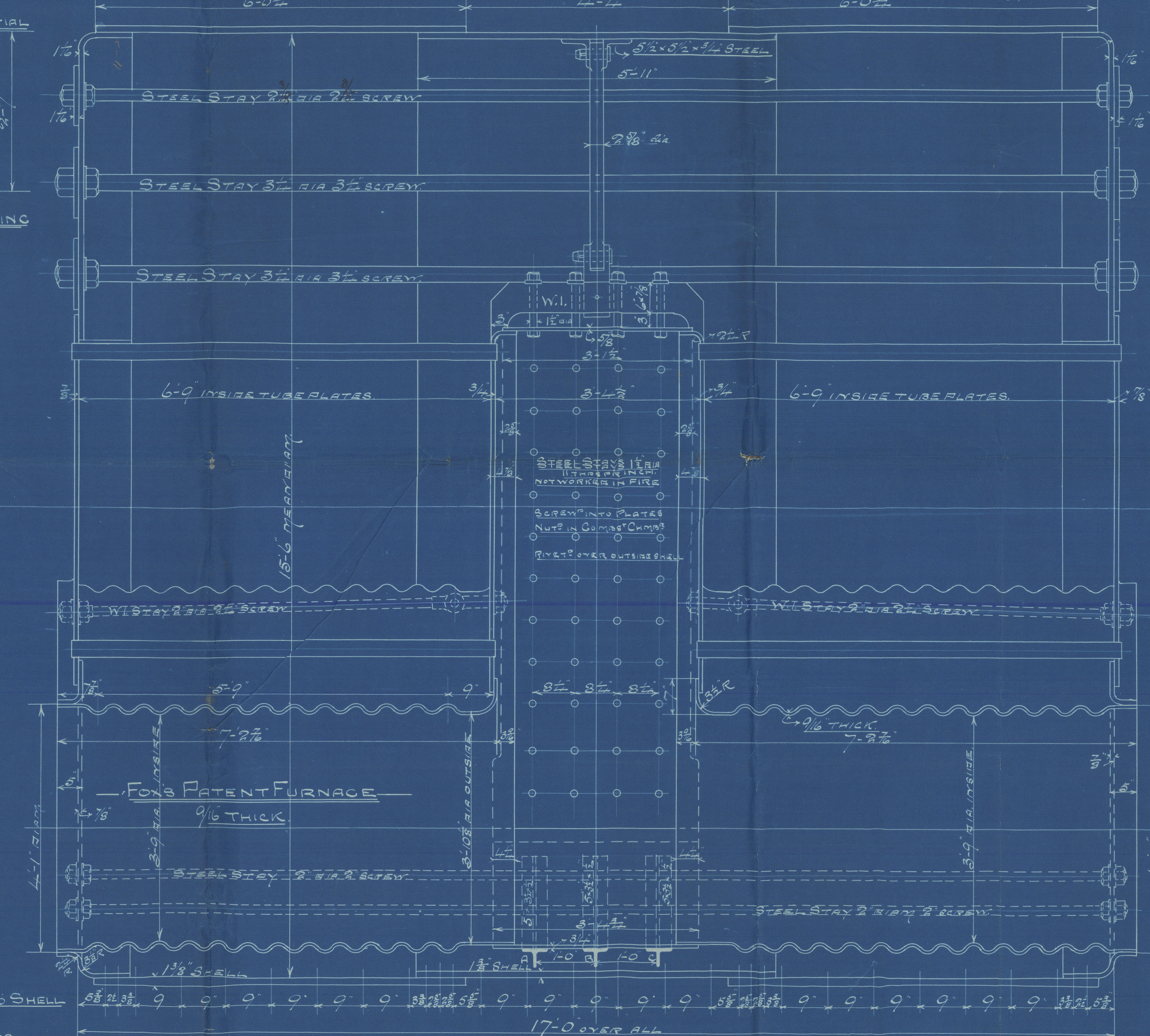
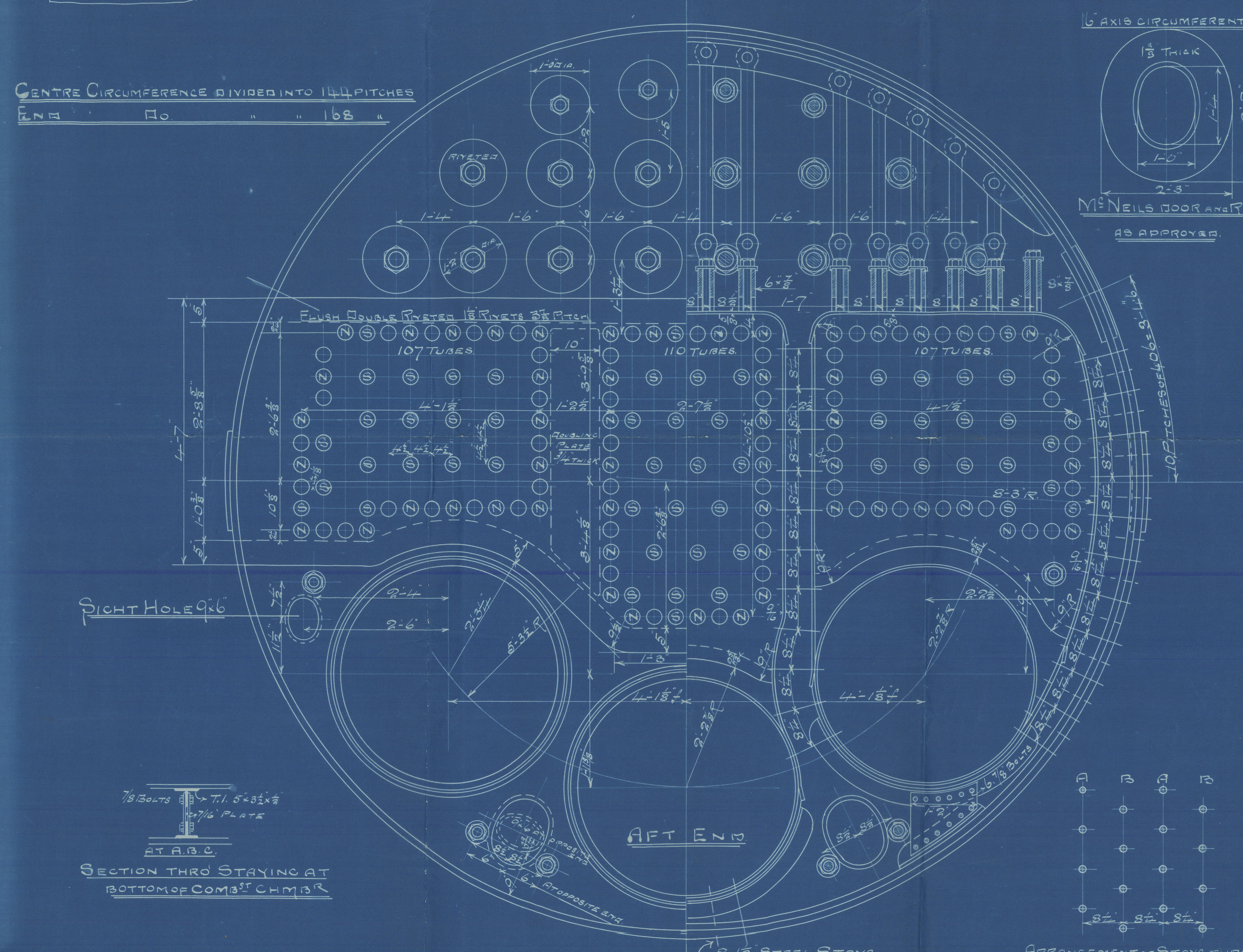
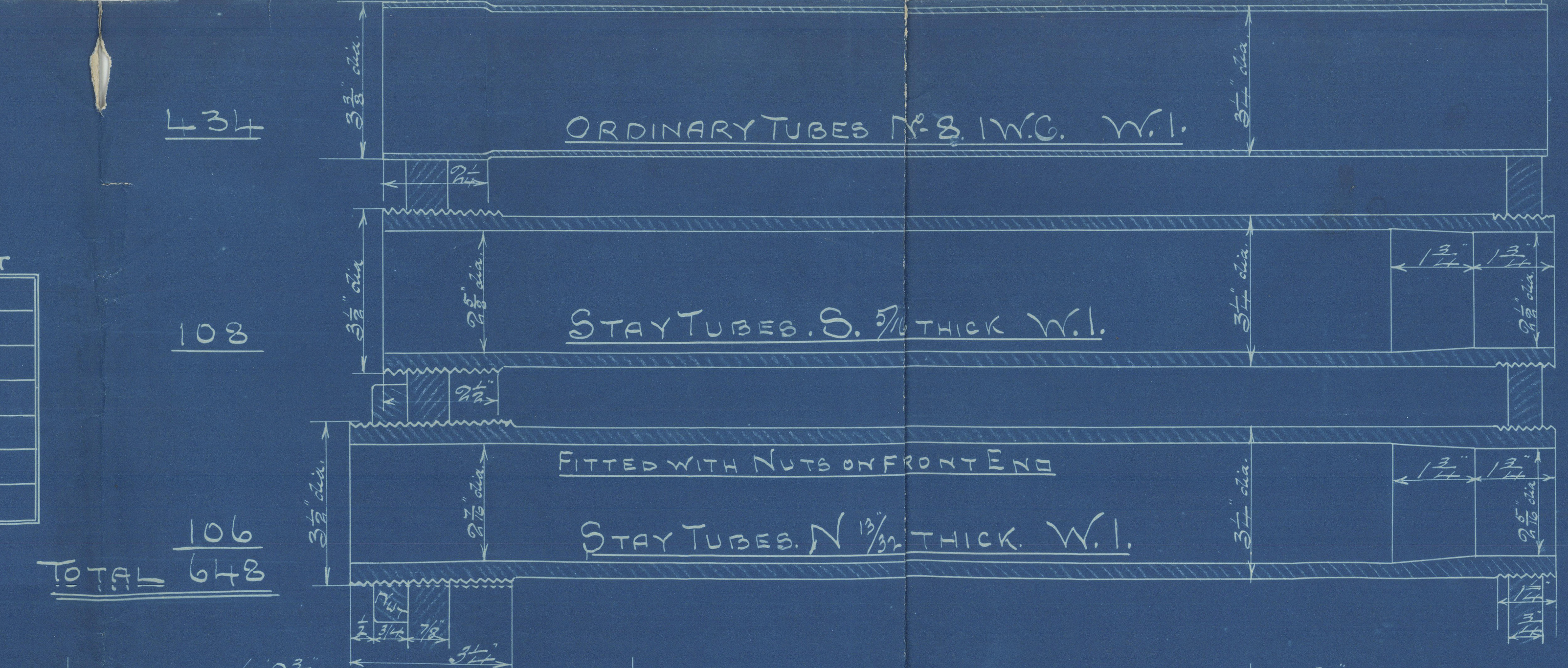
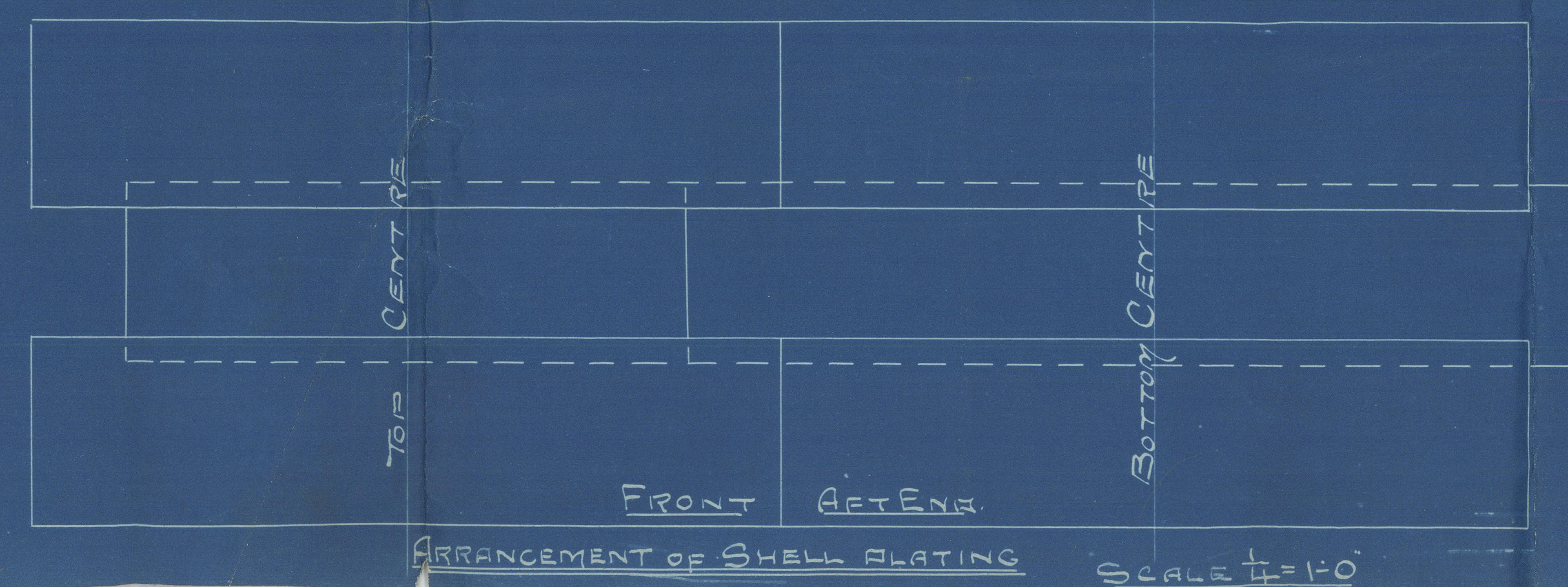


HEATING SURFACE	30 FT
TUBES	
FURNACES	
COMBUST CHAMBERS 4	
TOTAL	



PARTICULARS OF RIVETING				
SHELL	LONGITUDINAL SEAMS DOUBLE BUTT STRAPS RIVETED AS SHEWN			
1°	STRENGTH OF PLATE 84 1/2% STRENGTH OF RIVETS 86 5/8%			
2°	CIRCUMFERENTIAL SEAMS AT END DOUBLE RIVETED AS SHEWN			
3°	1°	2°	3°	CENTRE TREBLE 1°
FURNACES AND COMBUST CHAMBERS	SINGLE RIVETED 7/8 RIVETS 2 1/8 PITCH			
END PLATES	DOUBLE 1° WHERE SHEWN 7/8 RIVETS 3 PITCH			
	DOUBLE 2° 1 1/8 RIVETS 3 1/8 PITCH			
	ALL PLATES AND RIVETS STEEL ALL HOLES DRILLED IN PLACE			
	WORKING PRESSURE 160 LBS PER SQ INCH			
	TEST No. 320			



MAIN BOILER NO 256

29-10-91

2 OFF

UNDER SURVEY OF BOARD OF TRADE

NO

LLOYD'S

ALL 3.11.91

ARRANGEMENT OF SHELL PLATING SCALE 1/4" = 1'-0"

256

Main

Sagamore

Bel. First Entry

Report No. 4192

Main Box

256



© 2020

Lloyd's Register
Foundation

BEL 61 10024