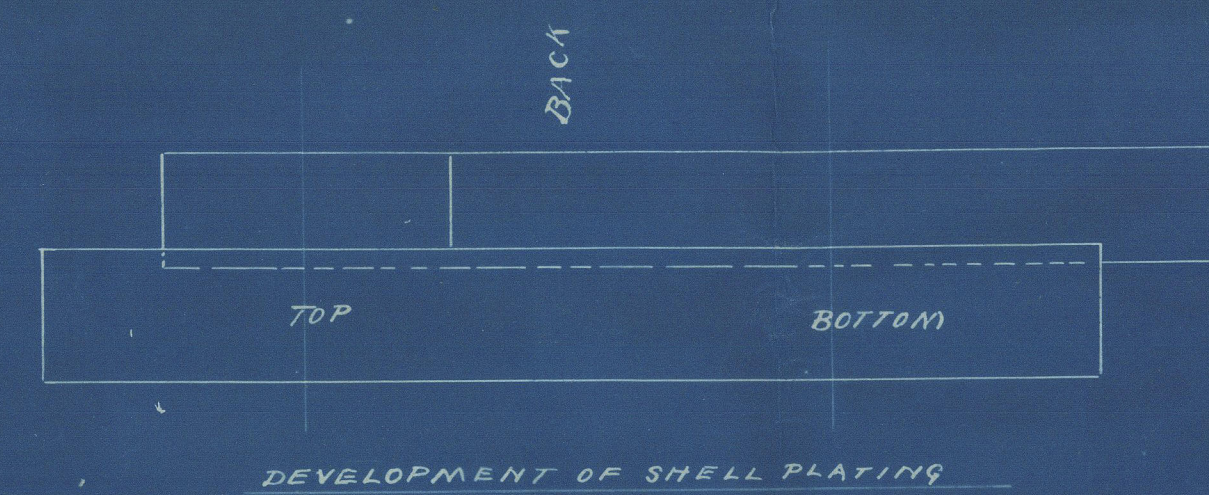


to B.L.  
5.11.91

DR 3377

30/10/91



PARTICULARS OF RIVETING

SHELL LONGITUDINAL SEAMS, DOUBLE BUTT STRAPS, RIVETED AS SHOWN

" STRENGTH OF PLATE  $84\frac{7}{8}$  STRENGTH OF RIVETS  $94\frac{7}{8}$

" CIRCUMFERENTIAL END SEAMS, DOUBLE RIVETED, AS SHOWN

" MIDDLE SEAM, TREBLE RIVETED, " "

FURNACES } SINGLE RIVETED 8 RIVETS 2 1/2" PITCH

& COMBUSTION } DOUBLE RIVETED WHERE SHOWN 8 RIVETS 3" PITCH

CHAMBERS

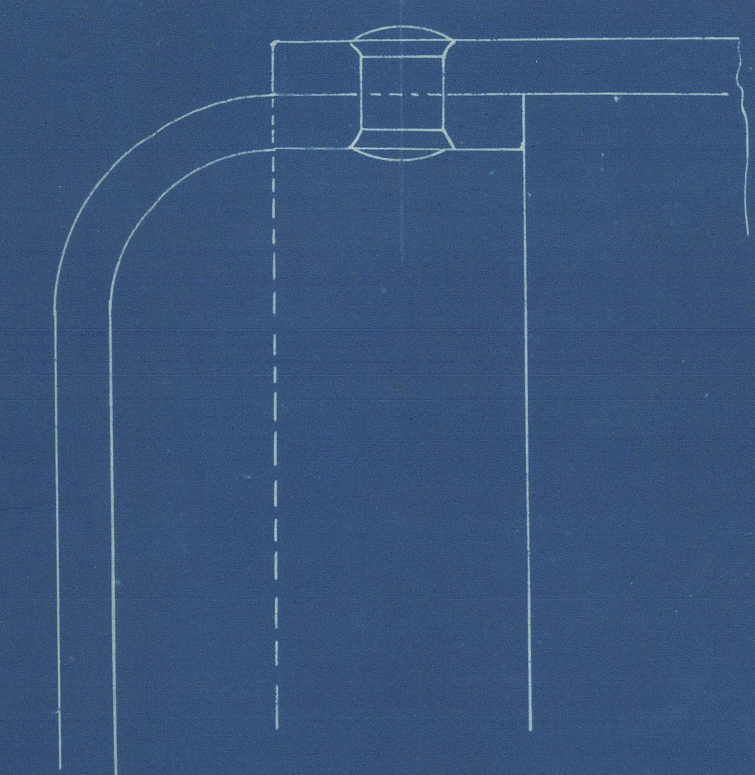
END PLATES DOUBLE RIVETED 18 RIVETS 3 1/2" PITCH

ALL PLATES & RIVETS OF STEEL, ALL HOLES DRILLED IN PLACE

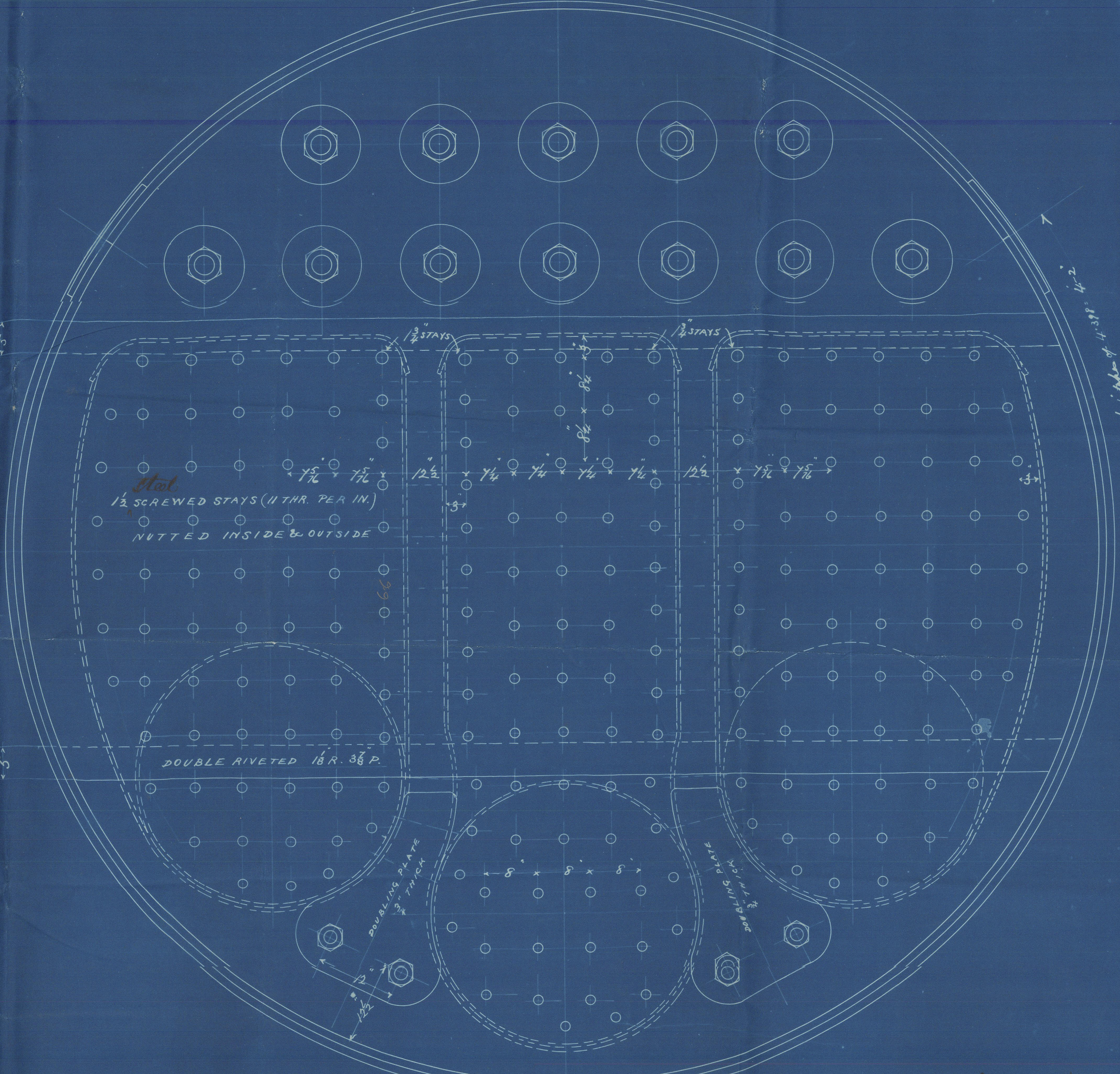
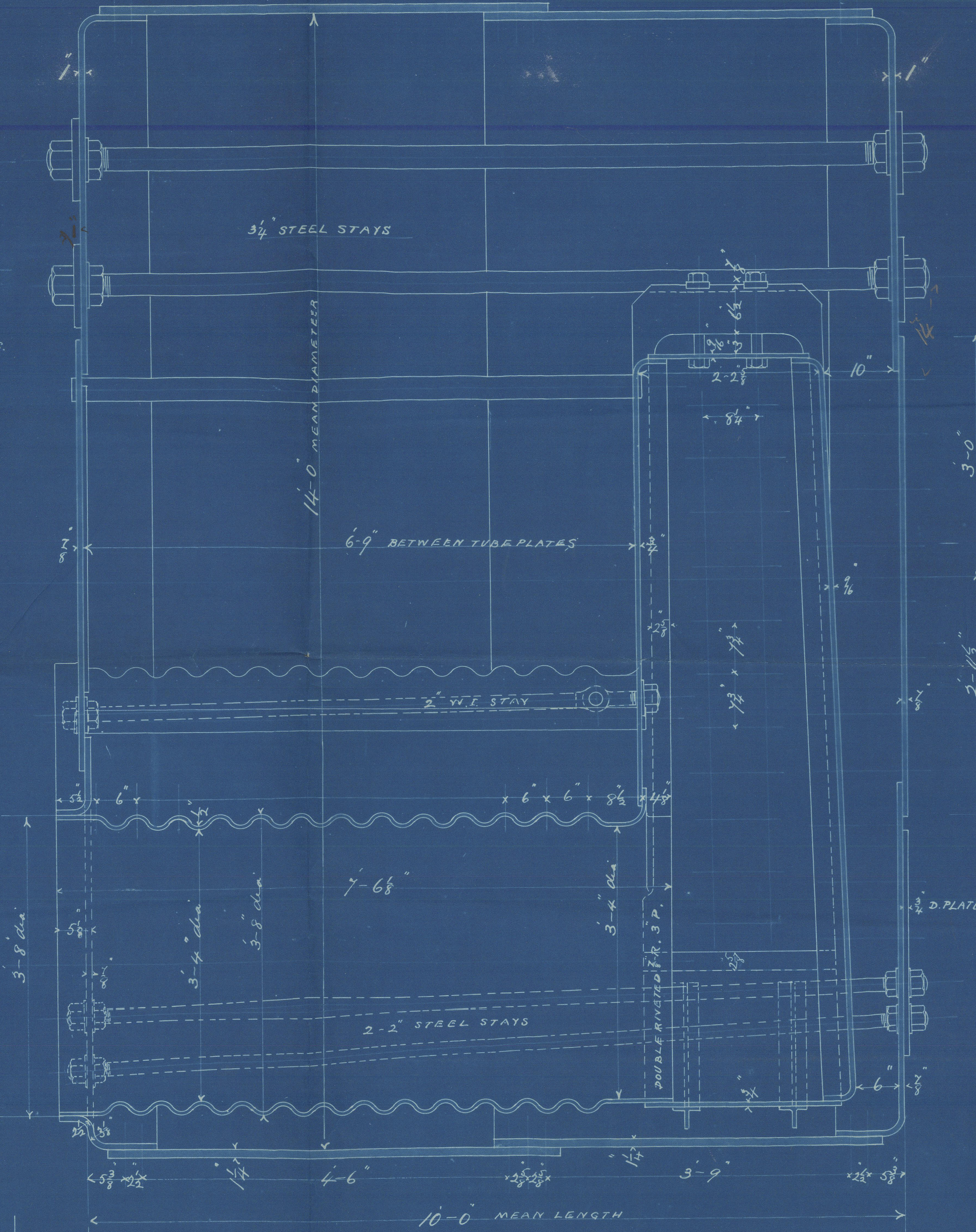
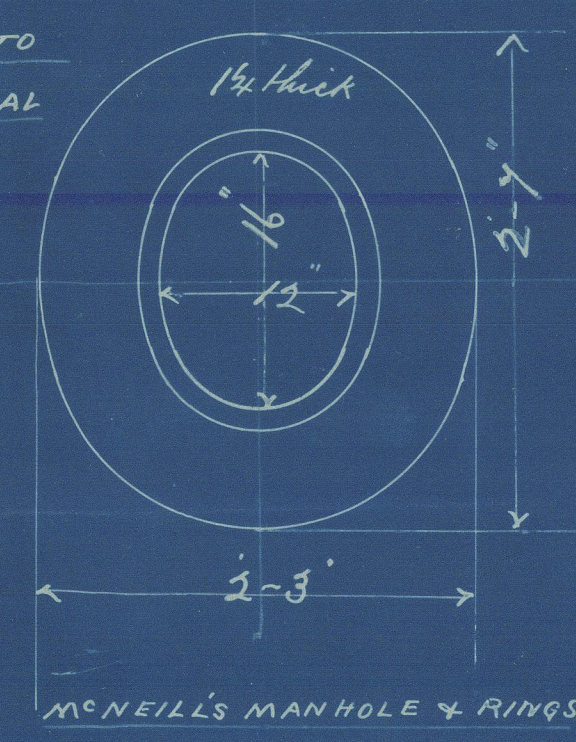
WORKING PRESSURE 160 LBS

TEST PRESSURE 320 "

NOTE. ALL RIVETS IN FURNACES & COMB. CHAMBERS TO BE COUNTERSUNK. THE HEADS TO BE FINISHED WITH A SLIGHT ROBBED.



NOTE. THE 16" AXIS TO BE CIRCUMFERENTIAL



to B.L.  
5.11.91

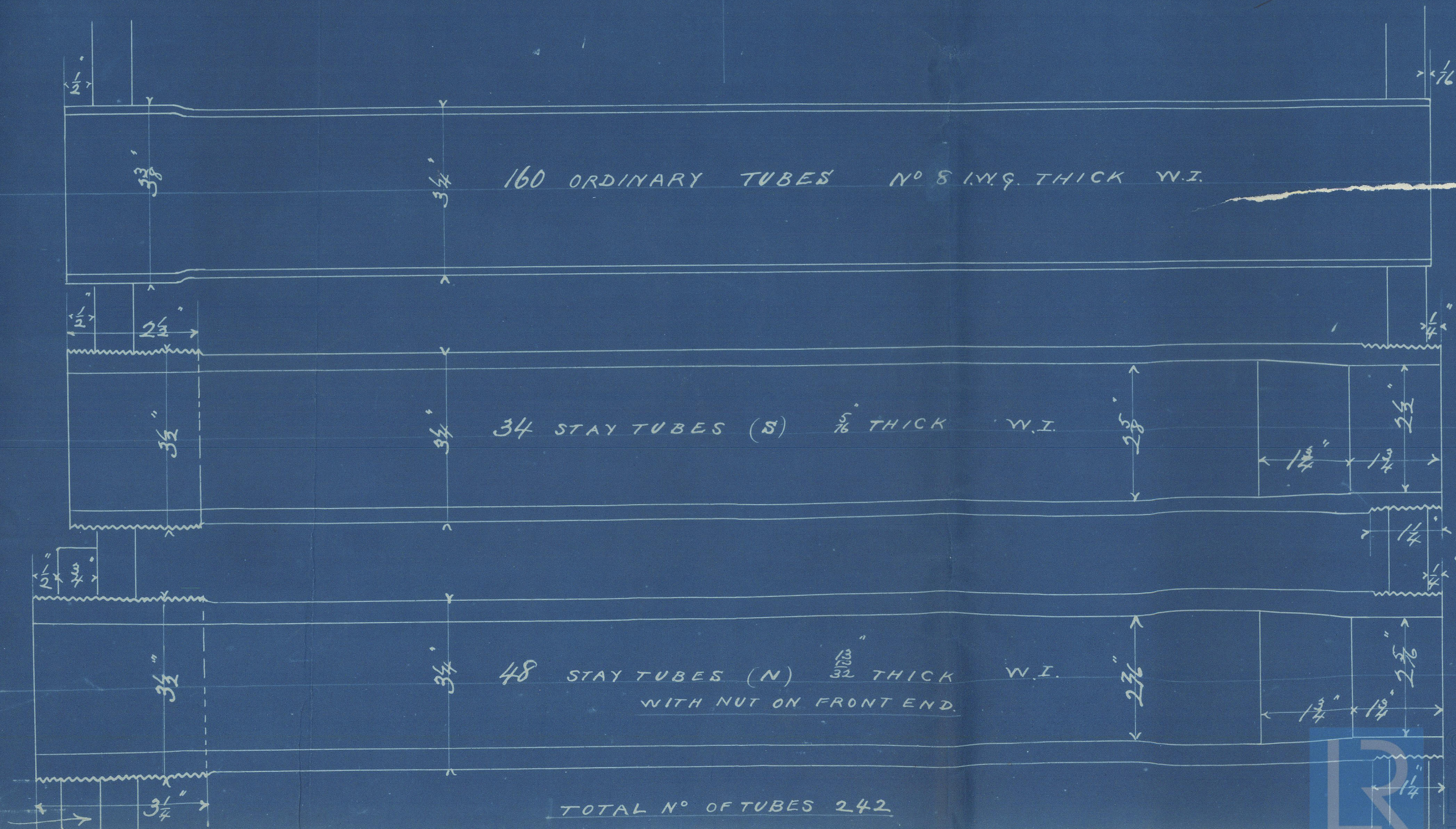
# AUXILIARY BOILER NO 256

SCALE 1 INCH = 1 FOOT.

1 OFF

UNDER SURVEYS OF LLOYDS & BOARD OF TRADE

NO ADDITIONAL HOLES TO BE DRILLED WITHOUT INSTRUCTIONS.



TOTAL NO OF TUBES 242



256

Auxiliary

Sagamore

Belfast First  
Entry Report no 4192



© 2020

Lloyd's Register  
Foundation

BFL61-0023