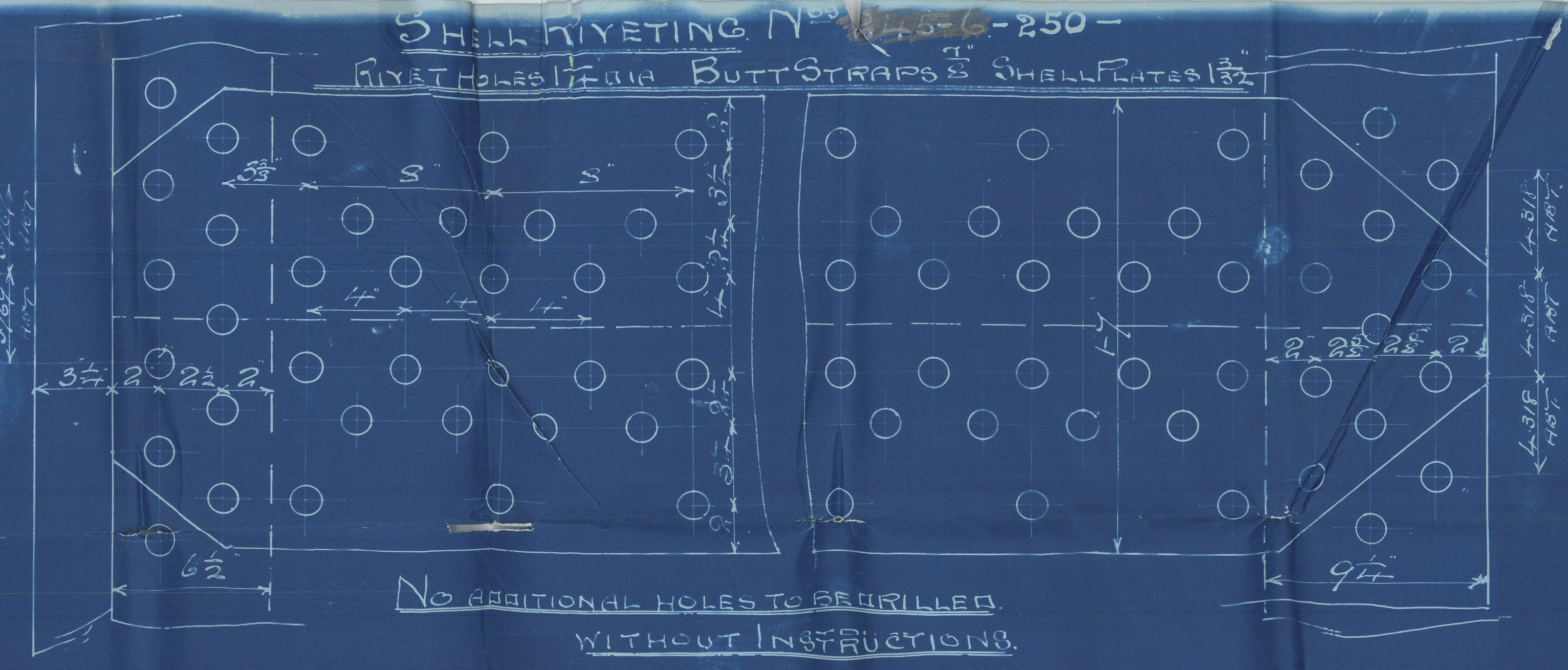
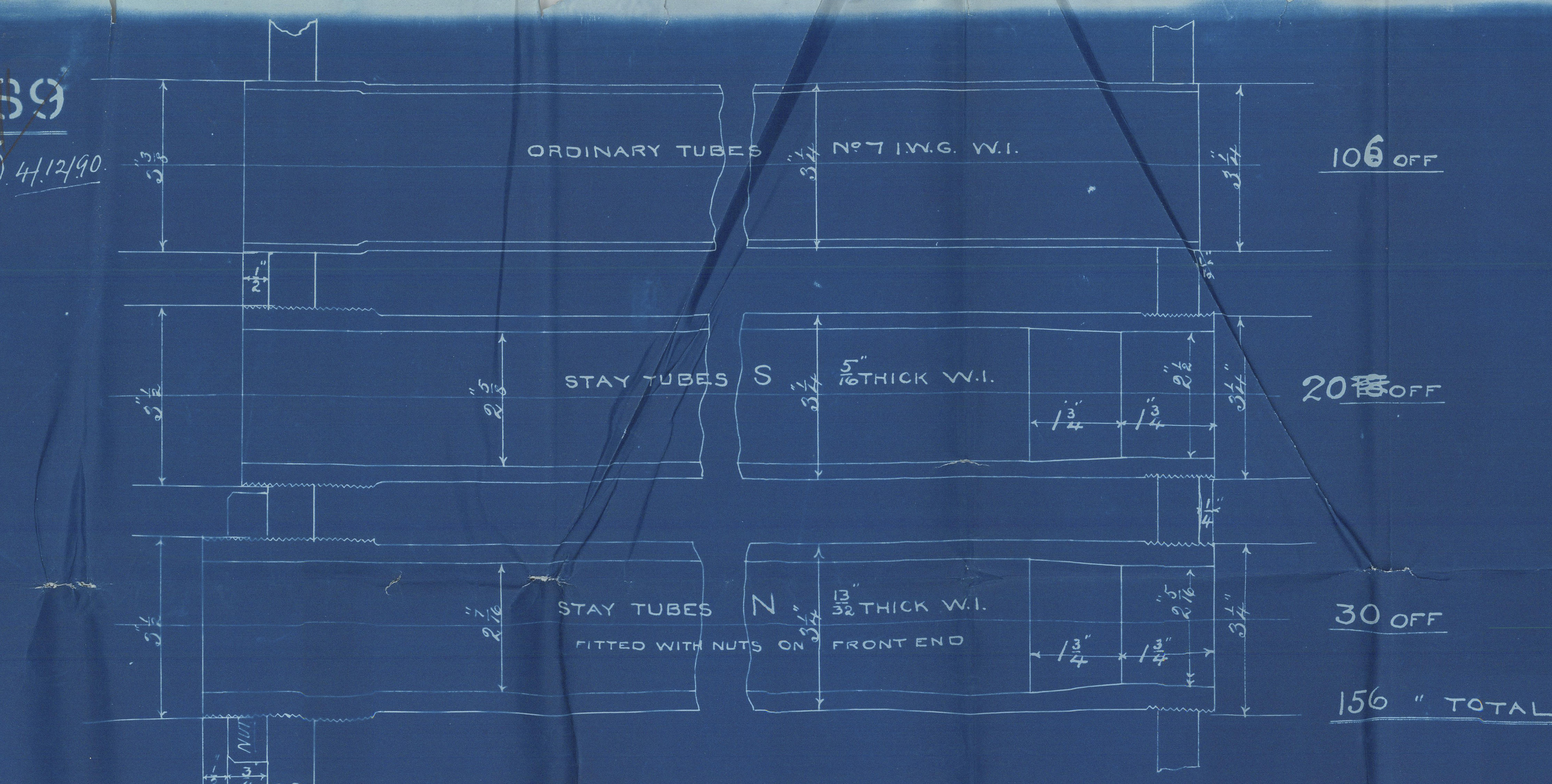
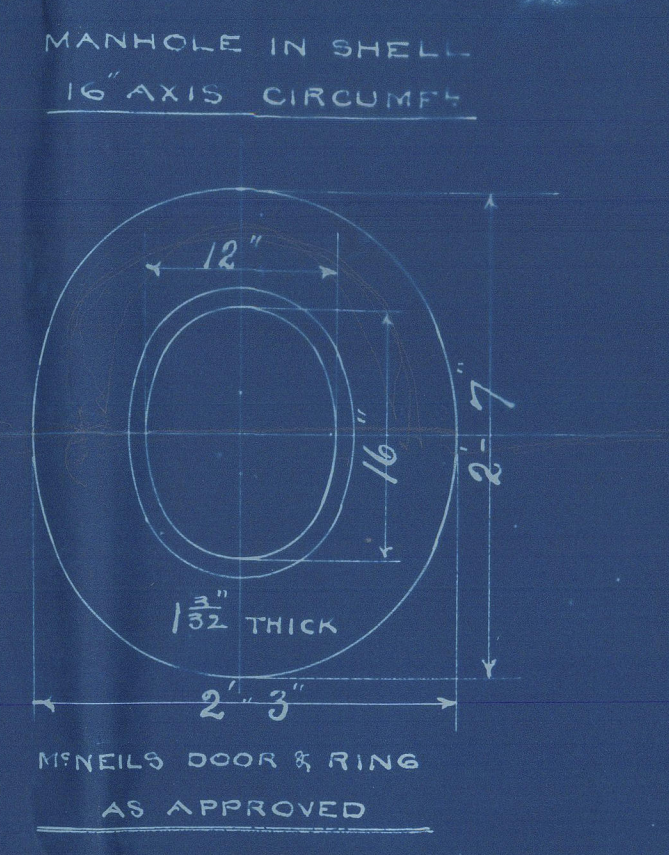
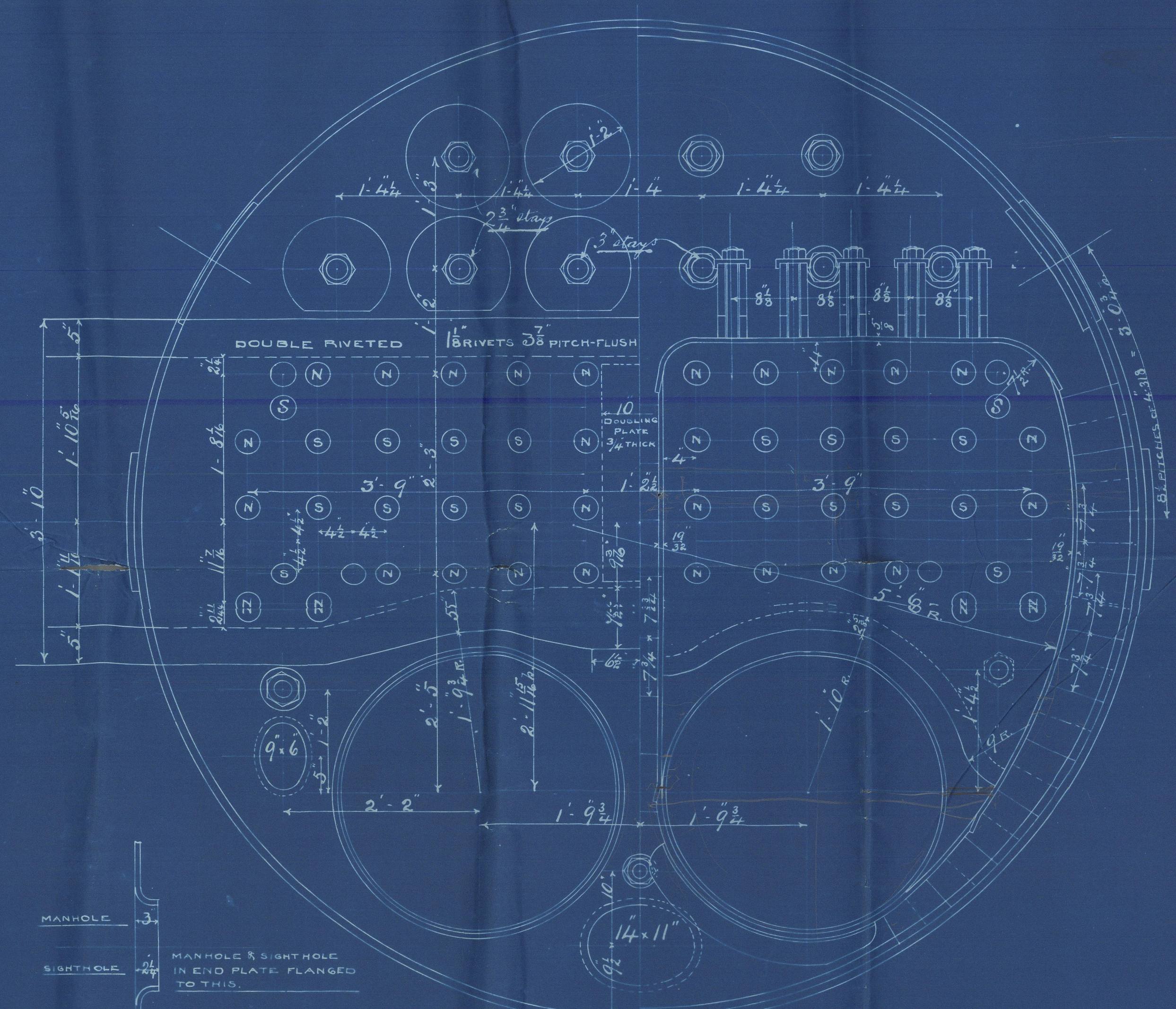
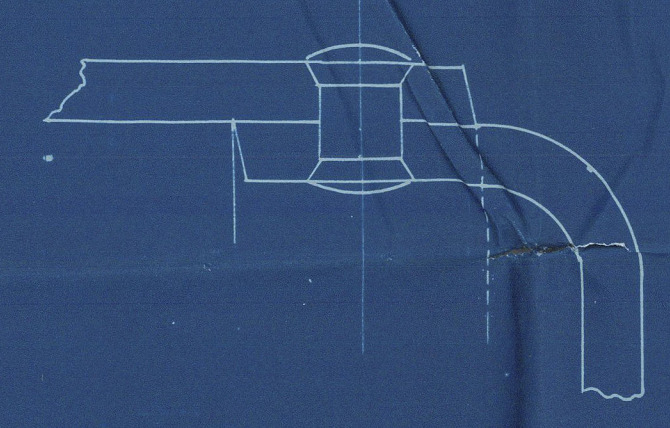


DR NO 3089

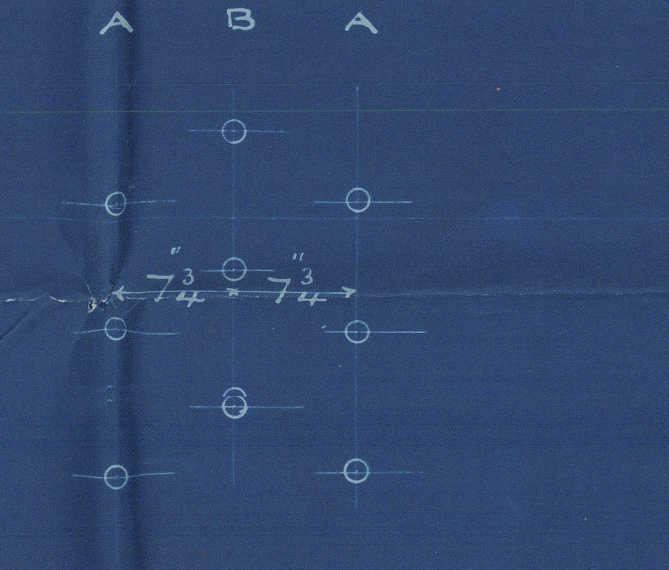
4/12/90



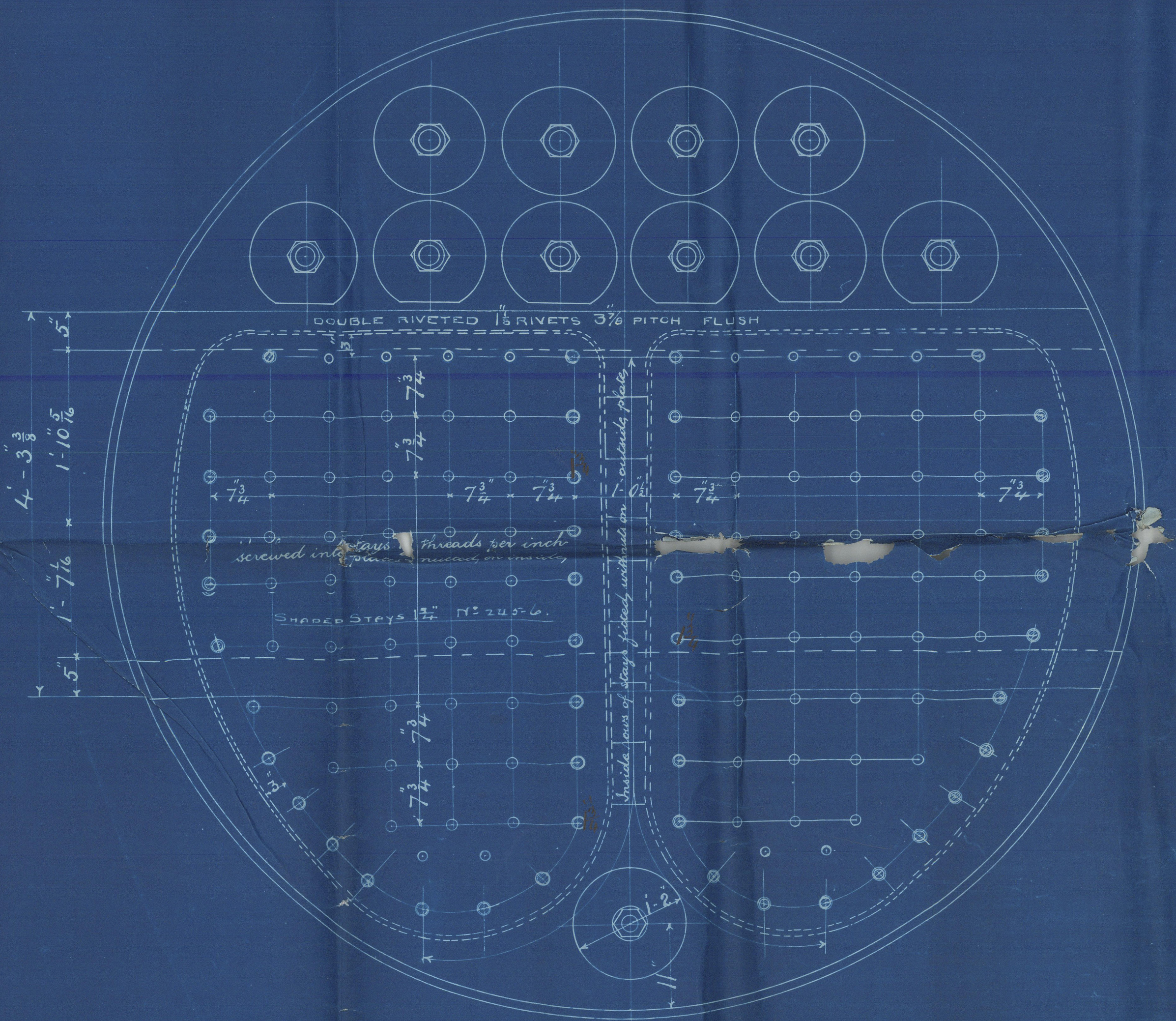
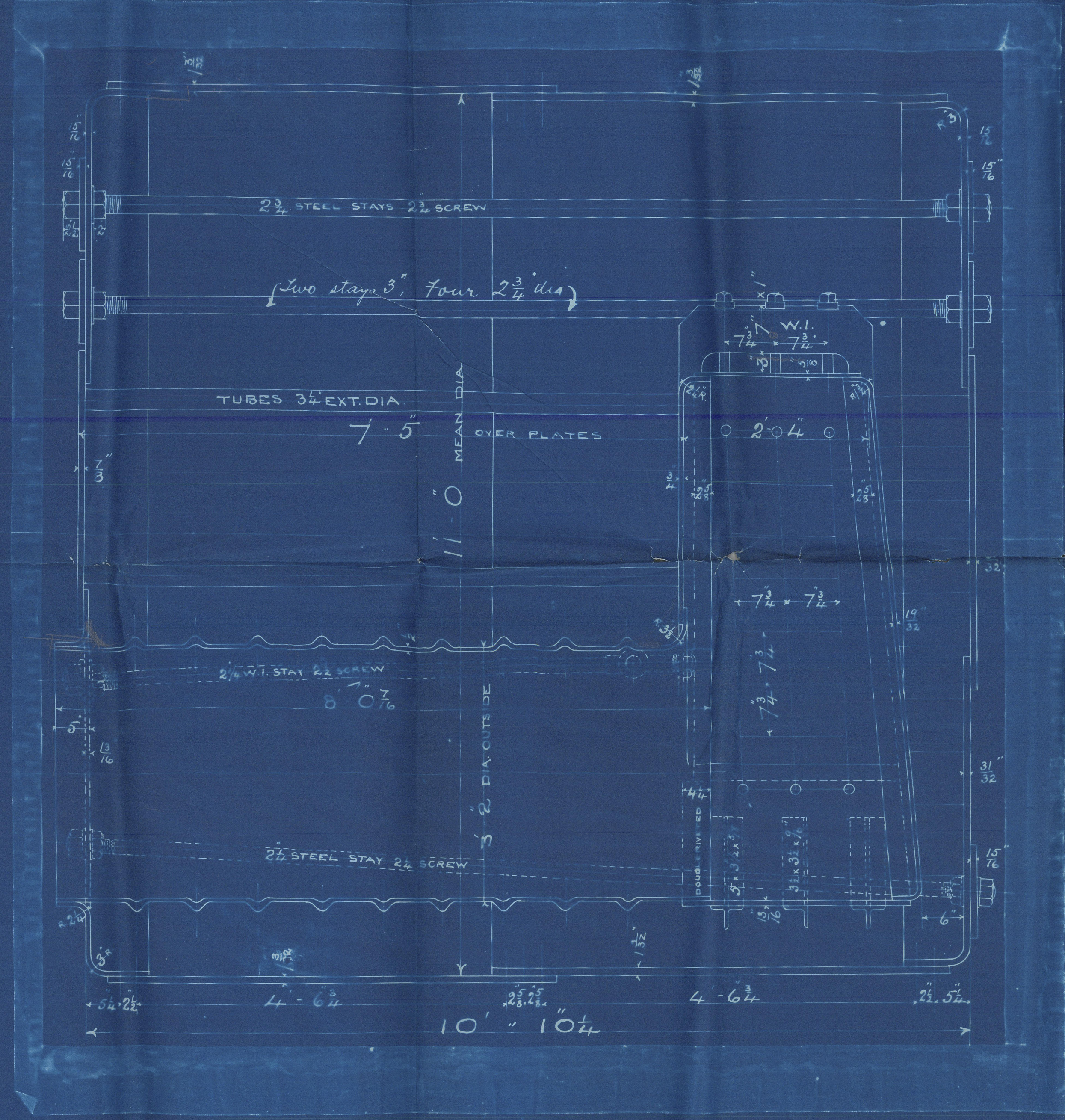
RIVETS IN FURNACES & COMB. CHAMBERS - THUS.



STAYS IN ROWS A TO FULL LINES B DOTTED



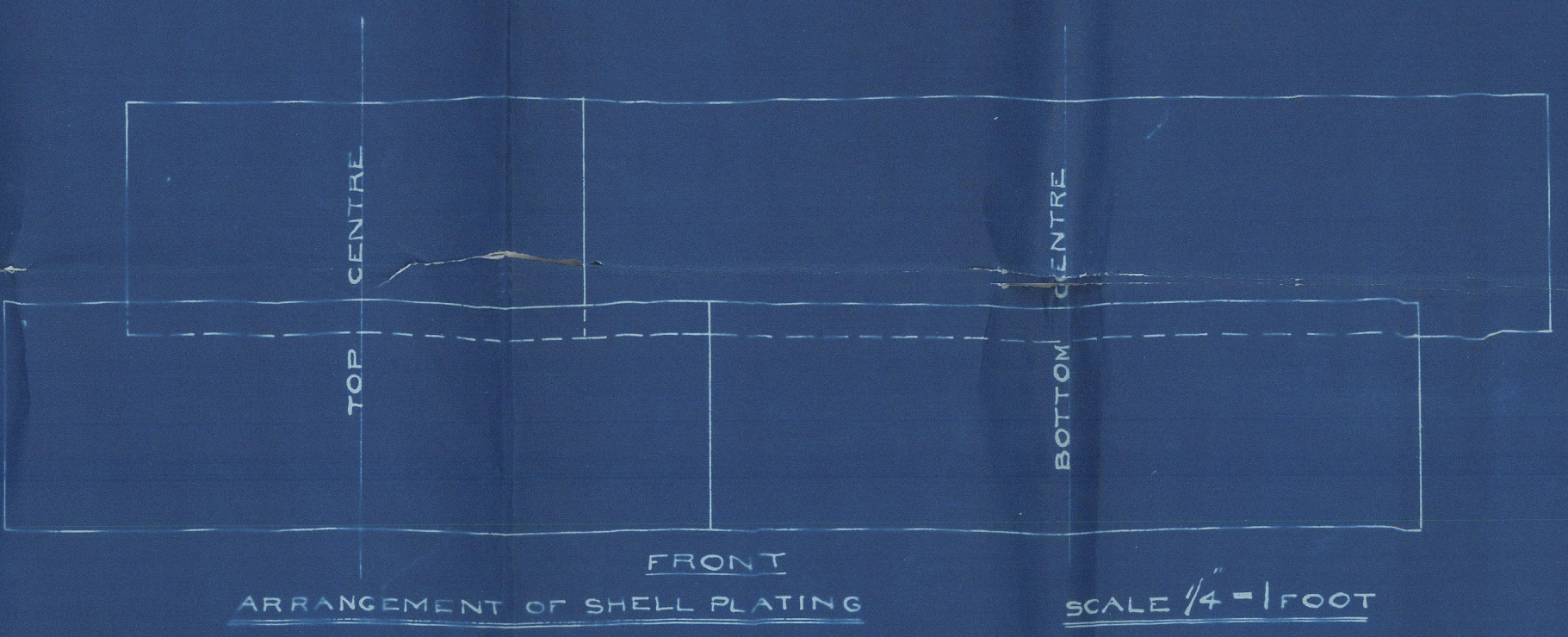
ARRANGEMENT OF STAYS THROUGH SHELL



PARTICULARS OF RIVETING SHELL

|                                |                    |                          |
|--------------------------------|--------------------|--------------------------|
| LONGITUDINAL SEAMS             | DOUBLE BUTT STRAPS | RIVETED AS SHEWN         |
| STRENGTH OF PLATE              | 2 1/2"             | RIVET 3/8"               |
| CIRCUMF. SEAMS                 | RIVETED AS SHEWN   | END DOUBLE MIDDLE TREBLE |
| FURNACES & COMBUSTION CHAMBERS | S.R.               | 7/8 RIVETS 2 1/2" PITCH  |
| DOUBLE RIVETED WHERE SHEWN     |                    | 3"                       |
| END PLATES                     | DOUBLE RIVETED     | 1 1/8" 3 3/8"            |

ALL PLATES & RIVETS STEEL ALL HOLES DRILLED IN PLACE AFTER BENDING.  
WORKING PRESSURE 180 LBS. TEST 360 LBS. PER 20 INCH.  
SUBJECT TO SURVEY OF BOARD OF TRADE



1 OFF

DONKEY BOILER

SCALE 1" = 1 FOOT.

NO-250-  
10th April 1911





Donkey  
250

Lord Erne

now Turcoman

Bel. First Entry Rpt.

No. 4107

BLU-0121

(Sup 20576)

Donkey Index 250

© 2021



Lloyd's Register  
Foundation