

PARTICULARS OF RIVETING SHELL

LONGITUDINAL SEAMS: DOUBLE BUTT STRAPS - RIVETED AS SHOWN

STRENGTH OF PLATE $84\frac{1}{2}\%$ - RIVET $92\frac{1}{2}\%$

CIRCUMFERENTIAL SEAMS: RIVETED AS SHOWN - END DOUBLE - MIDDLE TREBLE

FURNACES & COMBUSTION CHAMBERS - 5 R $\frac{7}{8}$ " RIVETS $2\frac{1}{8}$ " PITCH

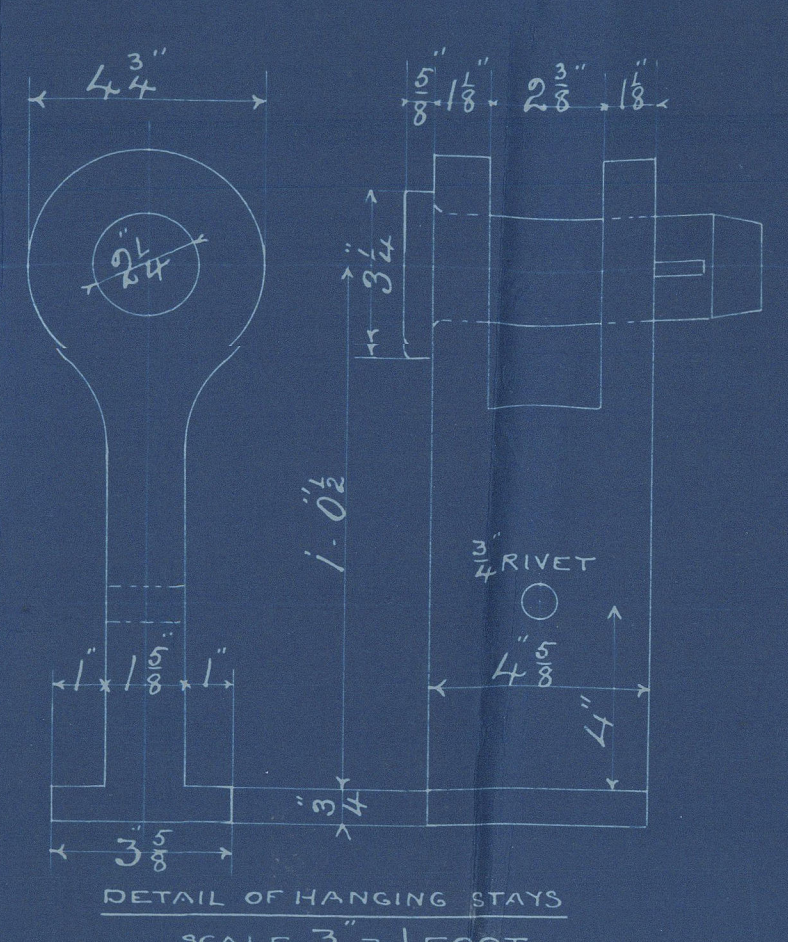
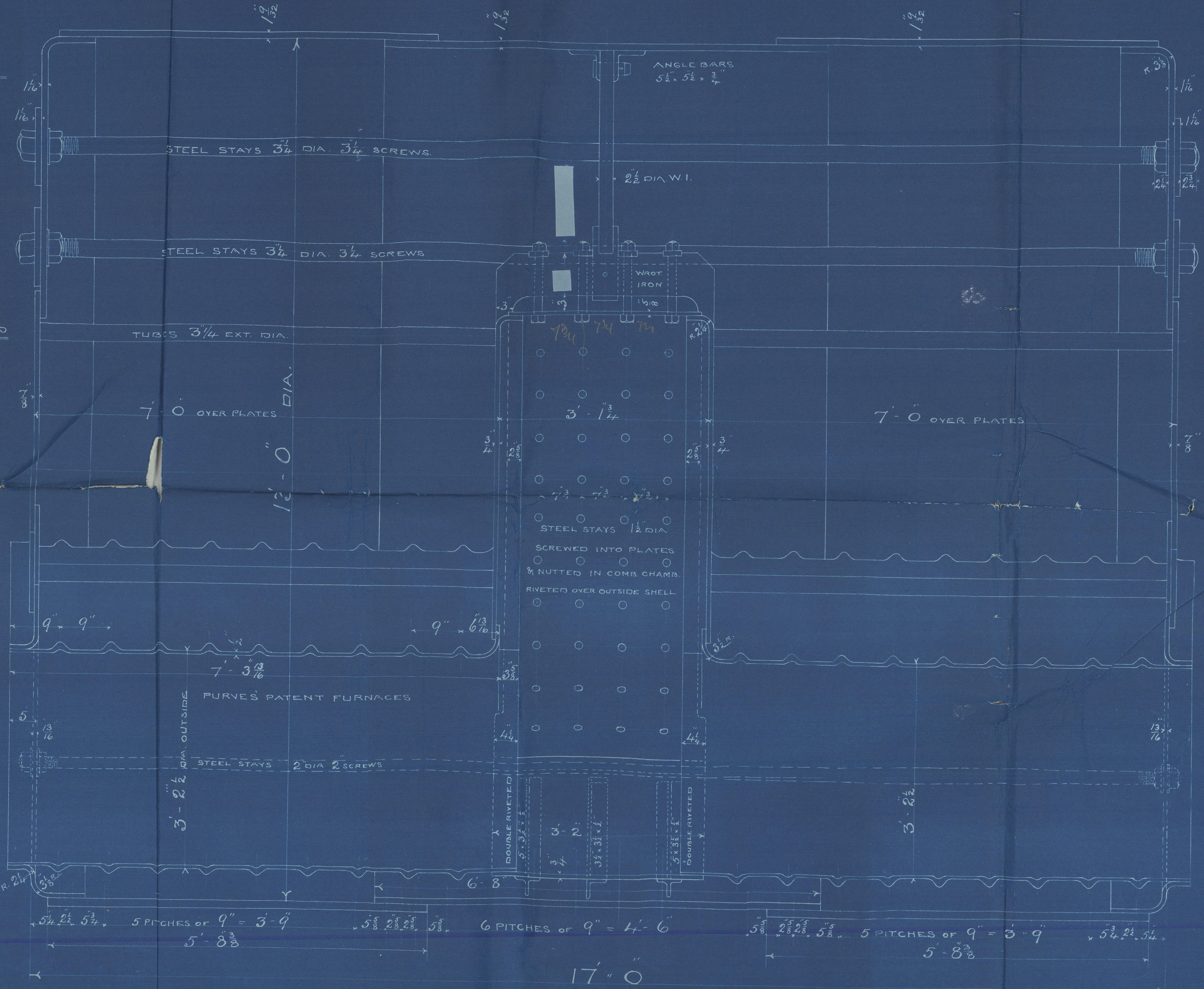
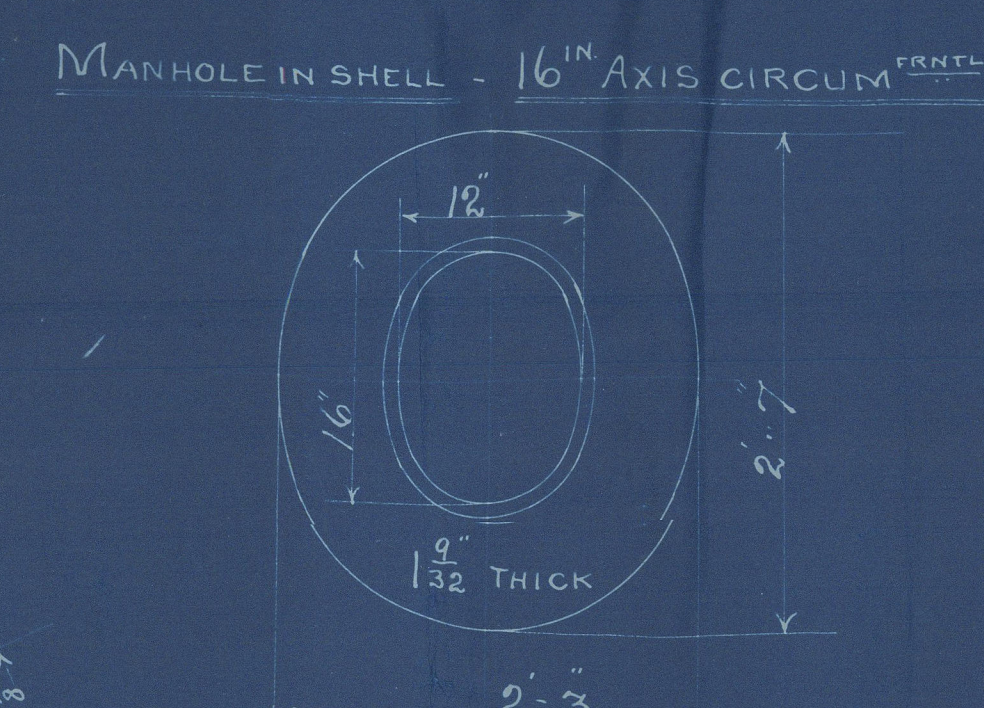
DOUBLE RIVETED WHERE SHOWN - $\frac{7}{8}$ " $3\frac{1}{2}$ "

END PLATES: DOUBLE RIVETED - $1\frac{1}{8}$ " $3\frac{1}{8}$ "

ALL PLATES & RIVETS STEEL - ALL HOLES DRILLED IN PLACE AFTER GRINDING.

WORKING PRESSURE 180 LBS. TEST PRESSURE 360 LBS. PER SQ INCH

SUBJECT TO SURVEY OF BOARD OF TRADE & LLOYDS.

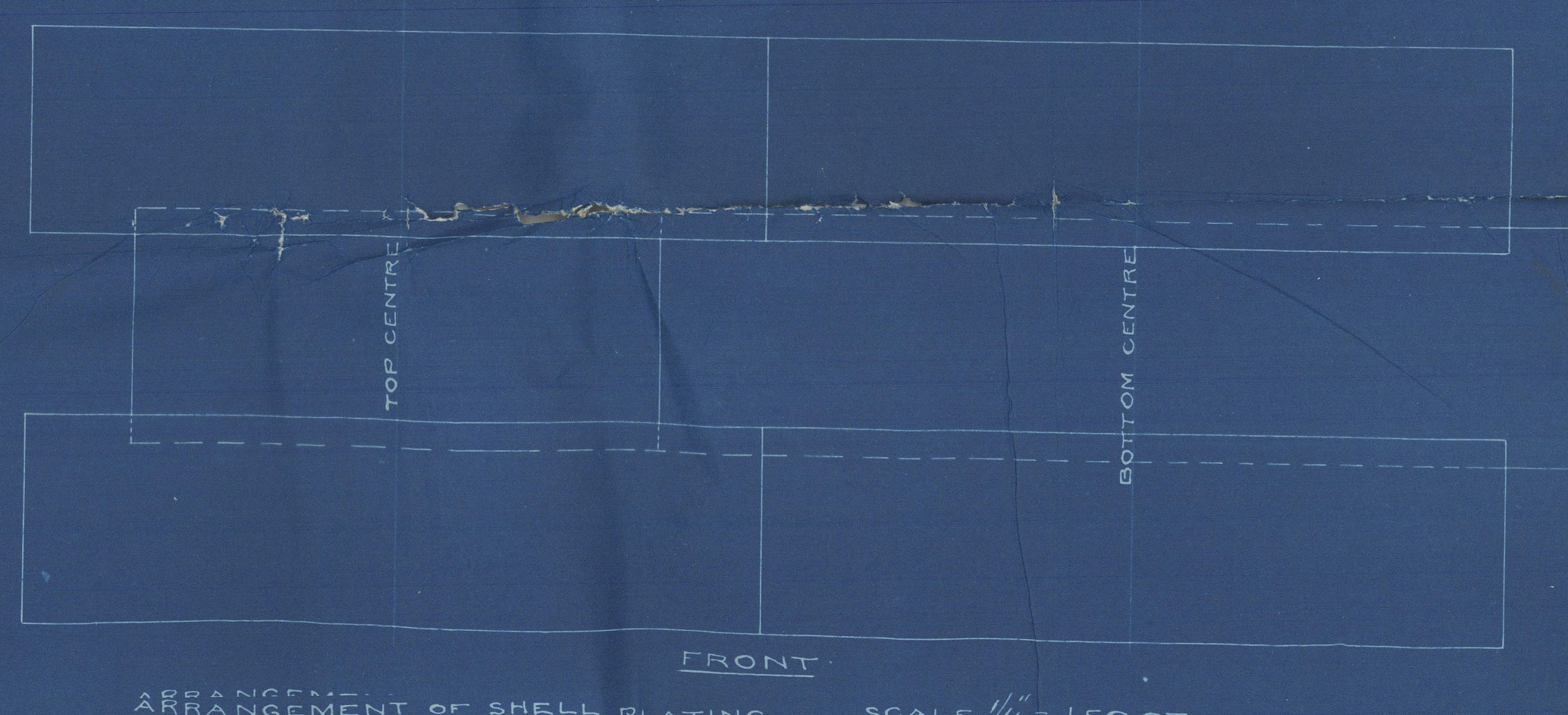
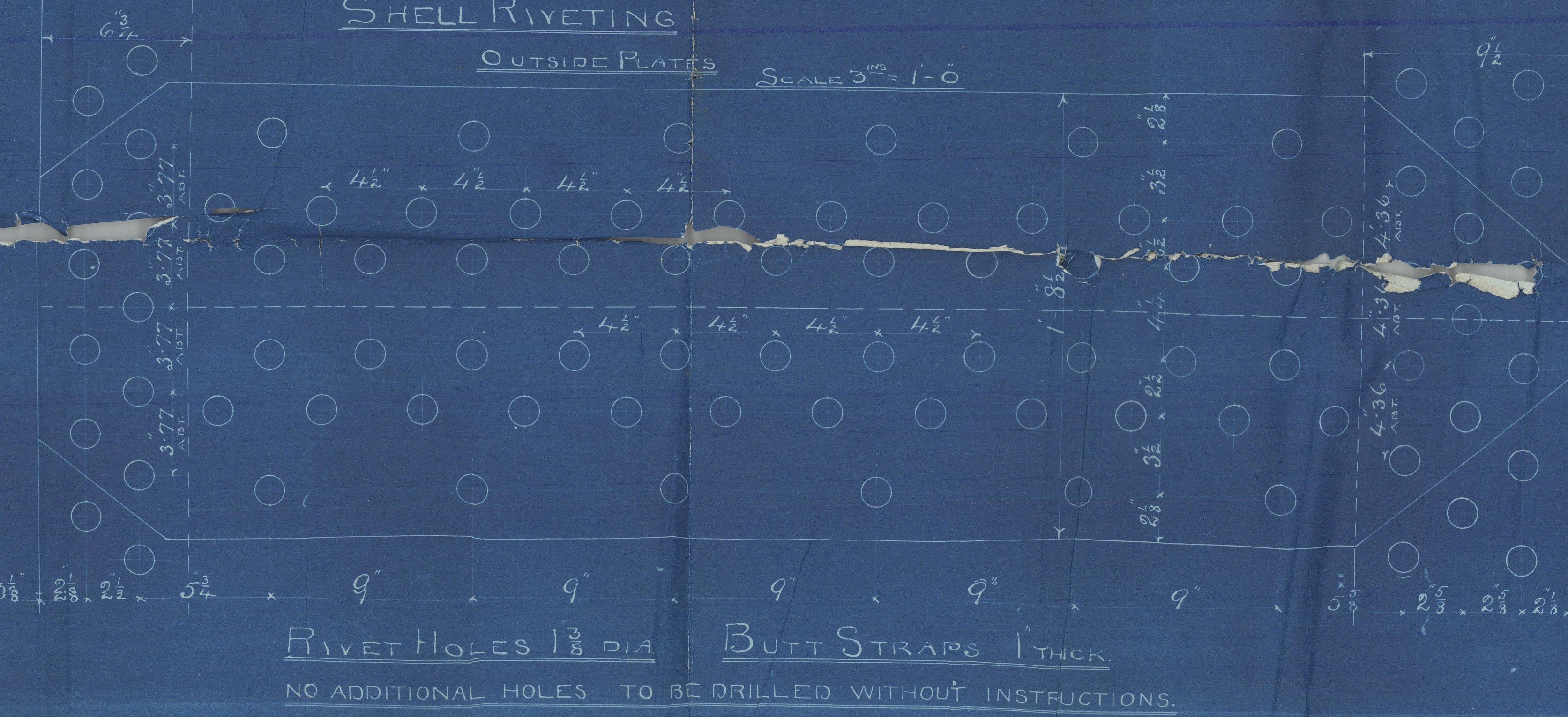


NOTE: ALL RIVETS IN FURNACES & COMBUSTION CHAMBERS TO BE COUNTERSUNK - THE HEADS FINISHED WITH A SLIGHT ROUND AS ABOVE.

SHELL RIVETING

OUTSIDE PLATES

SCALE 3" = 1'-0"



@Maam
250

Lord Erne

now tureman

Bel. First Entry

Rpt No 4107

BEL60-0118

(copy of 243-1-2)

Maam 250



© 2021

Lloyd's Register
Foundation

Lloyd's

0118



© 2021

Lloyd's Register
Foundation