



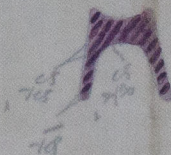
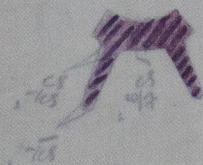


247

Cast Steel Stern  
Frame (approved)

Bel. First Entry Rpt  
No 4055.

BE660-0013



© 2024

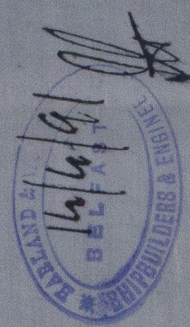
Lloyd's Register  
Foundation



18.4.91.  
27.4.91.

Nº 247  
CAST STEEL STERNFRAME

SCALE  $\frac{1}{2}$  INCH = ONE FOOT.



18/4/91

15.4.91