

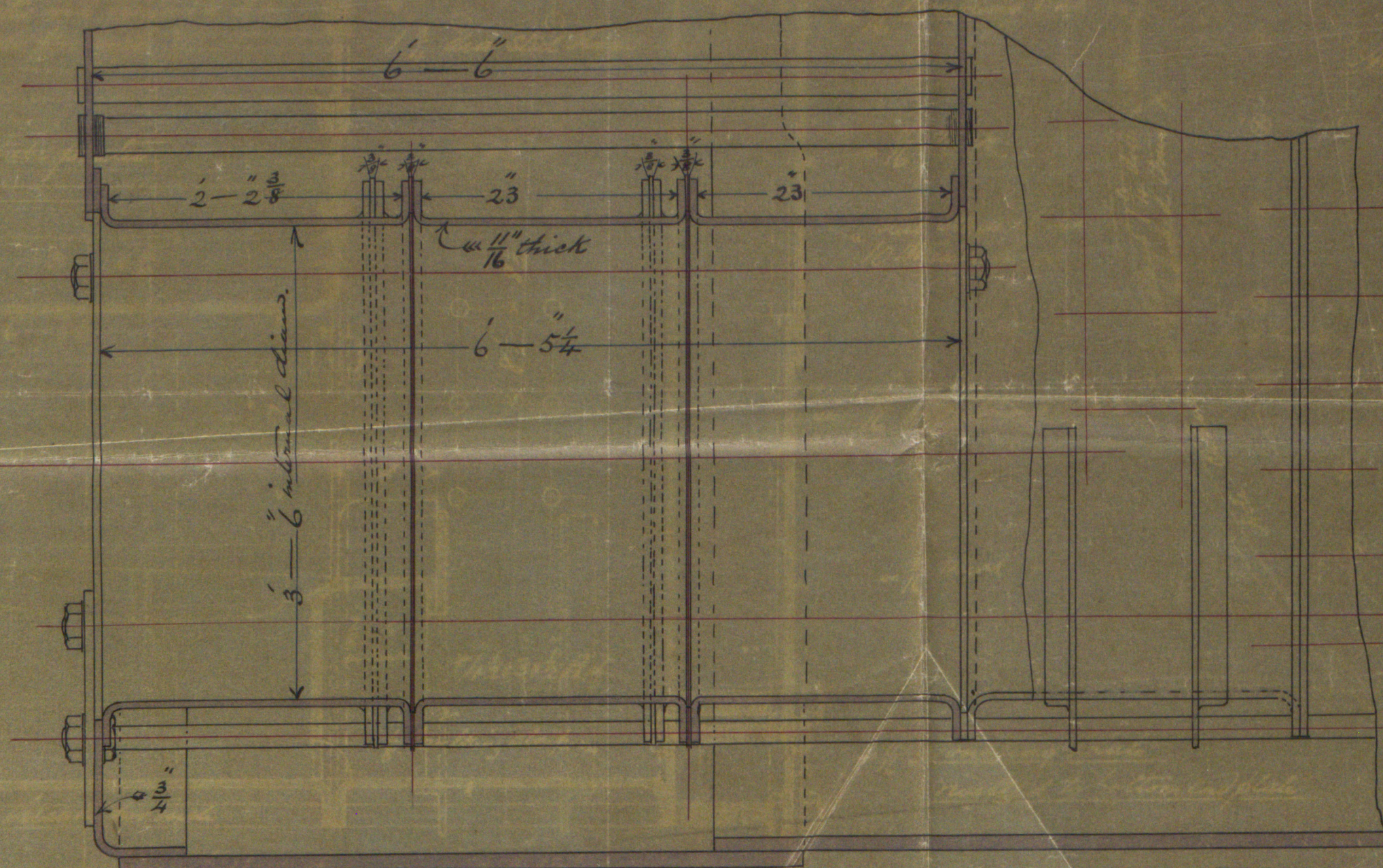
Tracing No 41119
Lbr 18 1/2

Main Steel Boiler for Ship N^o 48
Working pressure = 200 lbs. per square in.

<u>Shell rivetting.</u>	
Shell-----	$1\frac{3}{16}$
Butt Strap-----	$1\frac{5}{16}$
Rivet-----	$1\frac{3}{16}$

Lucing N^o 4137

Proposed alteration to Furnaces
Working press. = 200 lbs per sq in.



Scale 1" = 1 foot

MACILWAINE & MACCOLL,
LIMITED.
24 APR 1967
SHIP BUILDERS AND ENGINEERS,
BELFAST.
BFL59-0087

MACILWAINE & MACCOLL,
LIMITED.
13 APR. 1891
SHIP BUILDERS AND ENGINEERS,
BELFAST.