

44 4.11.90

Tracing No 3900

Donkey Boiler.

Working Press 60 lbs.

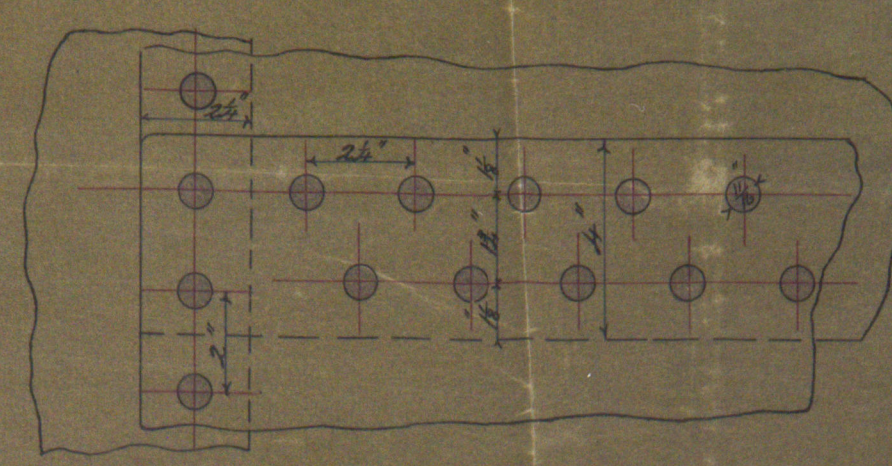
S.S. No 46.

S.S. "Steam & Fire"
Per Rpt 29.10.90

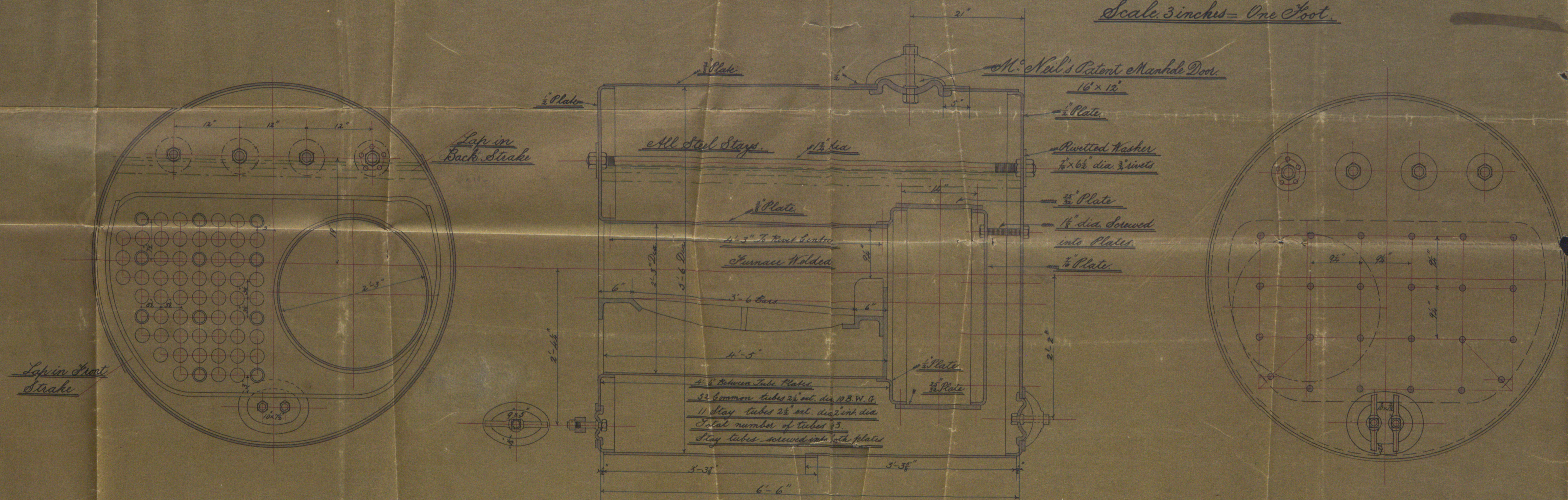
All steel plates. All steel stays.
Longitudinal seams lap jointed & double rivetted.
Circumferential " " " " single "
Steel rivets $\frac{1}{2}$ dia. 2.25 pitch.
Holes drilled in place after bending.
Safety Valves Two 2 inch.
McNeul's patent Manhole Doors throughout with
shorter axis longitudinally.

Shell Rivetting.

Percentage of plate 69.4



Scale 3 inches = One Foot.



Scale 1" = One Foot.

W.A. 1.11.90

W.A. 29.10.90

MAGILWAINE & MACCULL, LIMITED.
27 OCT. 1890
NEW BUILDING AND ENGINEERS,
BELFAST.



Lloyd's Register Foundation

S.S. Steam Fisher

Bel Rpt 3916

*3916
S.S. Steam Fisher
Bel Rpt 3916*

© 2021

Lloyd's Register
Foundation



*1.4
Hoff
Co*

*4 p.p.
Hoff
Co*

