

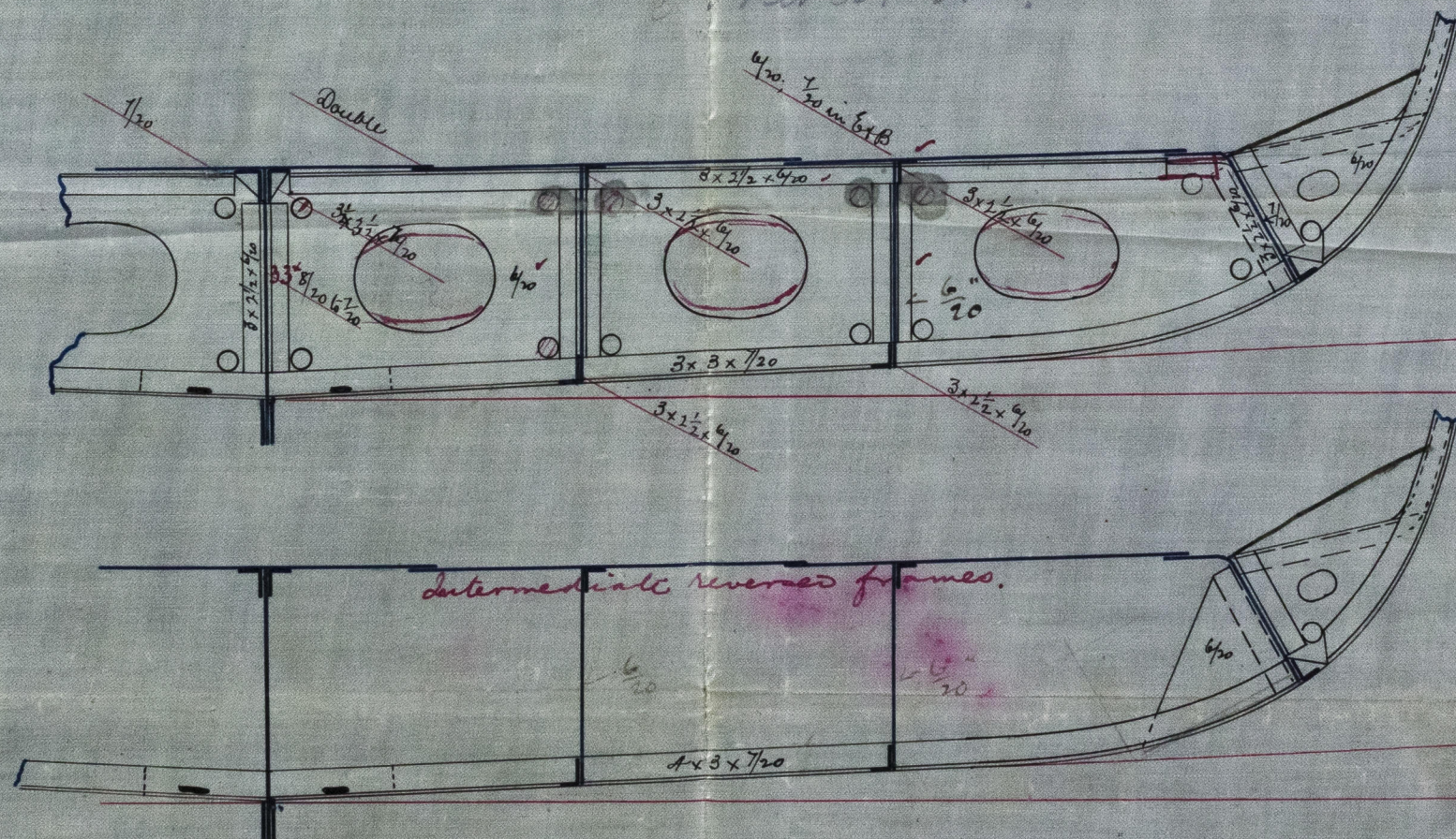
THU 2 MAY 89

Alternative Method of fitting Double Bottom

N<sup>o</sup> 70 S.S. Harlay. Rec. Rep. 3761.

Scale 1/2" = one foot.

*This method fitted  
Barnston.*



*Solid floors every frame in  
way of Engines*

*P.M. 20-4-89.*

Section of frames between floors

BEL57-0160

*J.H.  
1/5/89*



© 2019

Lloyd's Register  
Foundation