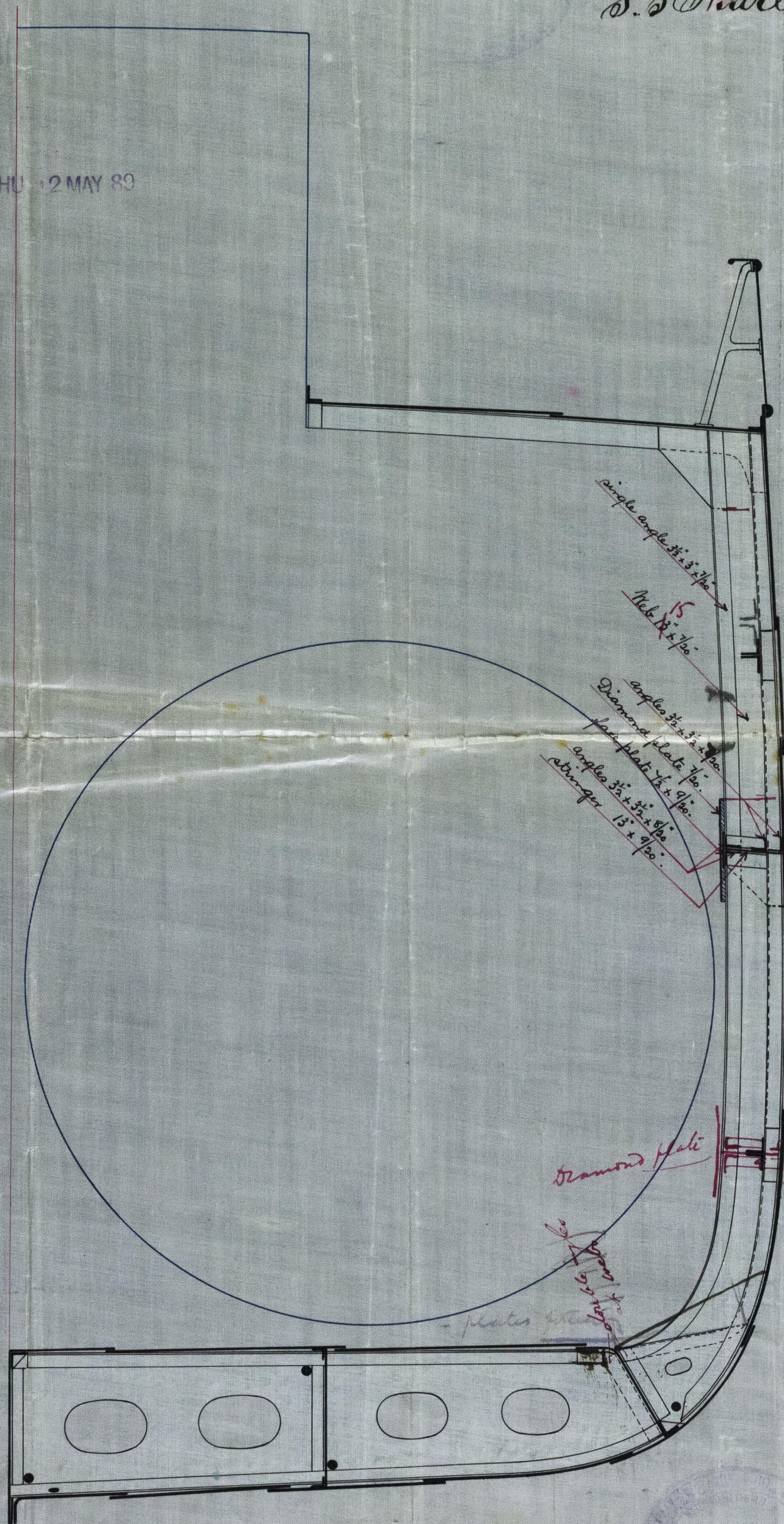


Section in way of Boilers shewing proposed Hold Stringer 1870 S.S.
 Scale $\frac{1}{2}$ inch = one foot.

S. S. Marlay Bel Rpt 3760

THU 2 MAY 89



Reversed frames in way
 of R.O.S. to upper inter-
 costal & gunwale alter-
 nately.

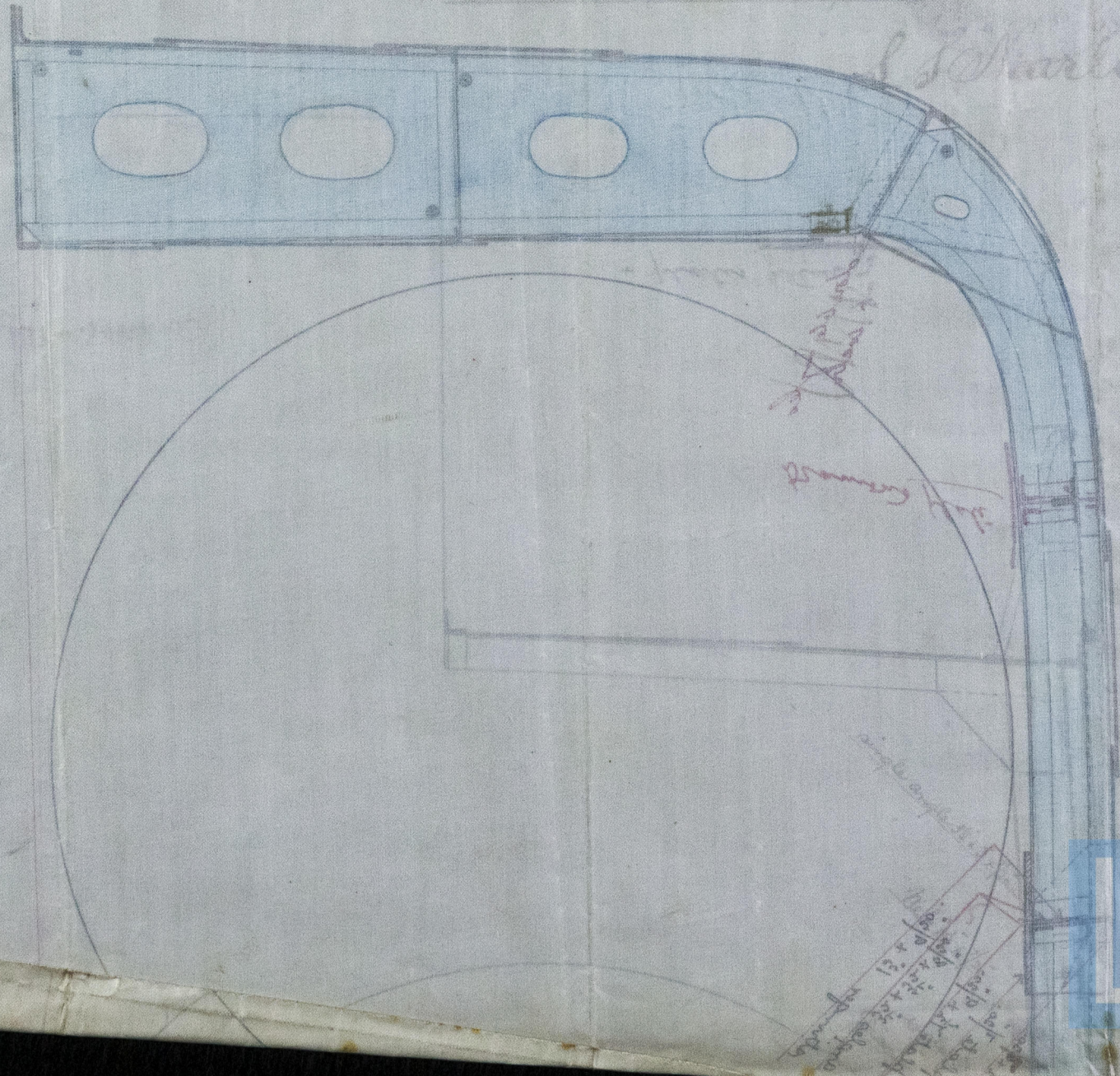
Dec 20-4-89

BEL 57-0129

BEL 57-0156

S. S. "Marlary"
Bel Rpt 3761

1/2/61
9/1/61



QW 20-11-86



© 2019
Lloyd's Register
Foundation