

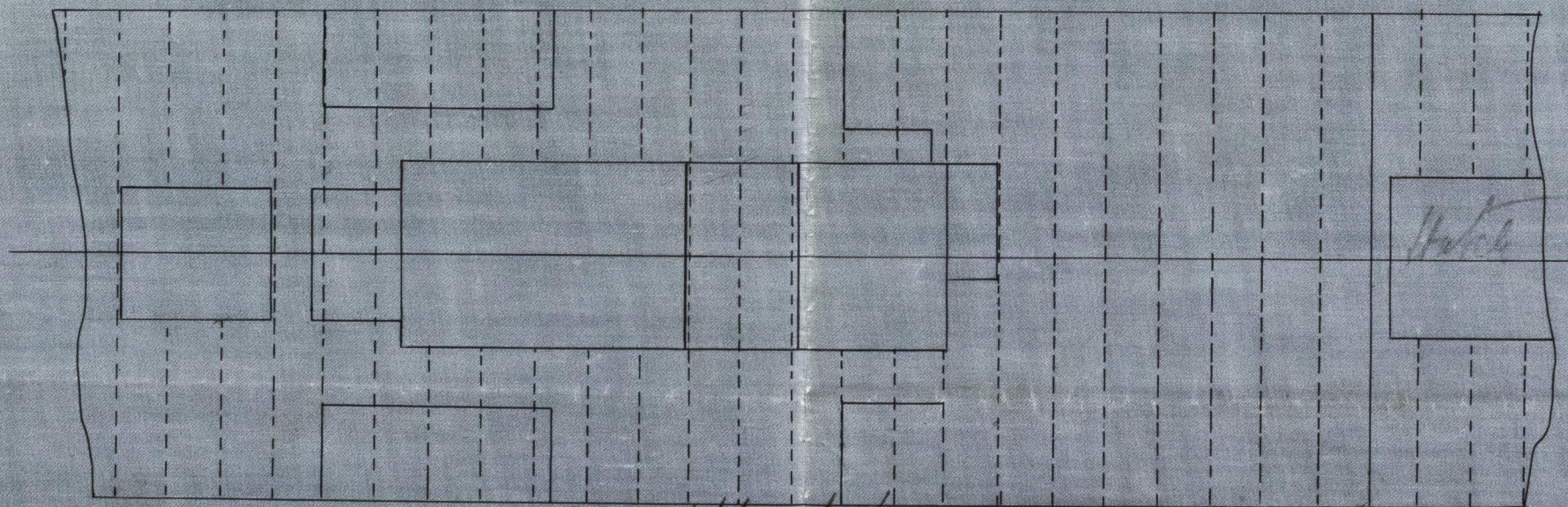
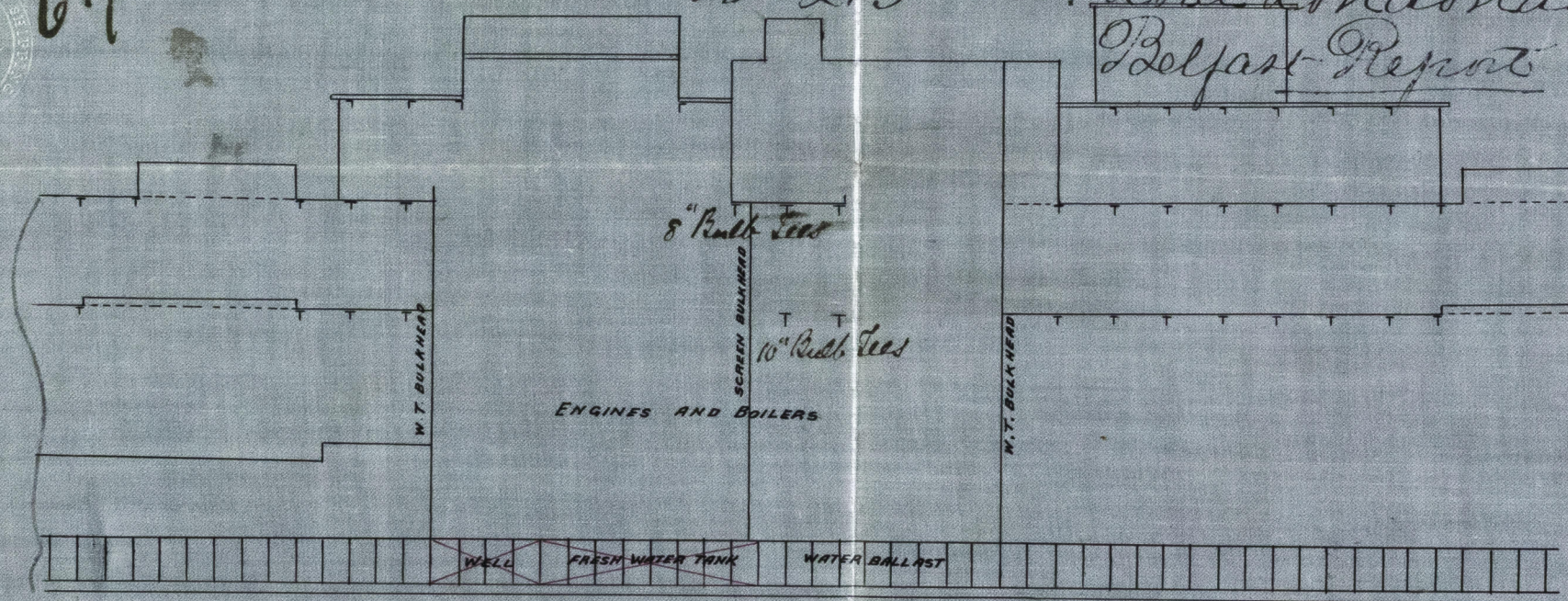
No. 212 S.S. "Palmas"

Belfast Report No. 3492

No. 213 S.S. "Lond Londonderry"

Belfast Report No. 3516

6.7.88.



Upper deck

— No. 212. — and 213

— ARRANGEMENT OF BEAMS IN E & B SPACE. —

— SCALE  $\frac{1}{12}$ " = ONE FOOT. —

June 27th 1888  
H. & W. HALL  
Belfast  
SHIPBUILDERS & ENGINEERS

W. H. H. 6/7/88

30.6.88  
Lloyd's Register  
Foundation

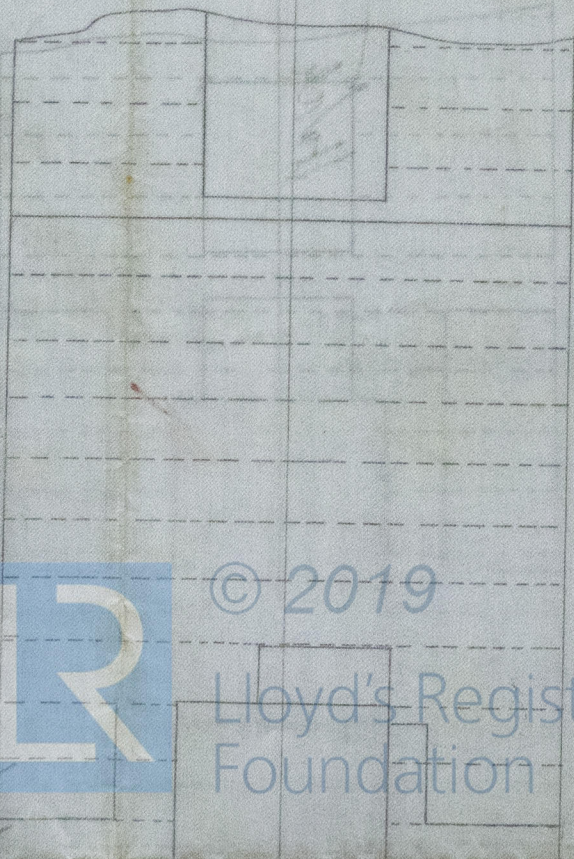
REL55-0167





BLS5-0167

27/189



© 2019

Lloyd's Register  
Foundation