

Tracing No 2756

14 9 5 17

Steel Boiler for S.S. "William Hinde."

Working Pressure 100 lbs.

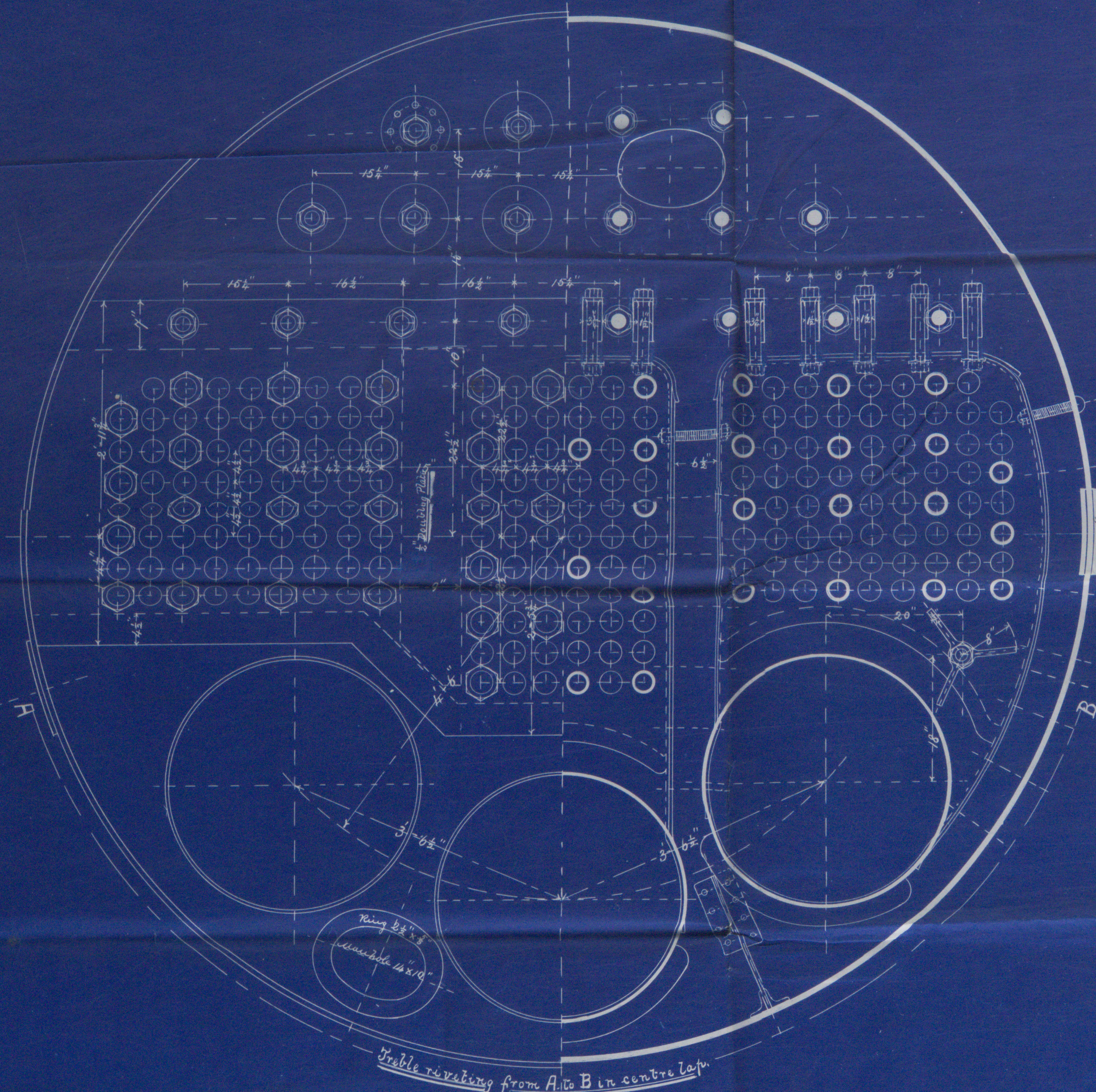
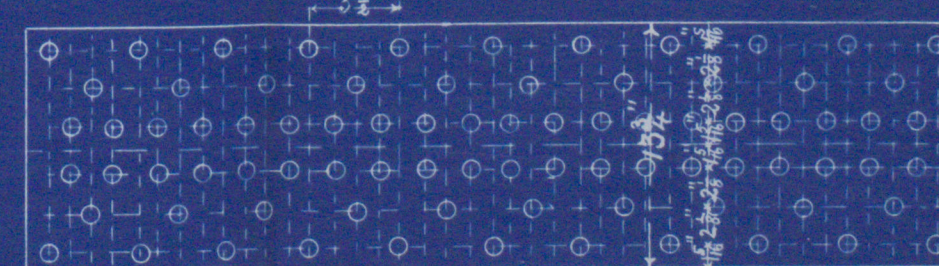
Boiler No 266

Longitudinal seams double butt strapped & riveted per pitch
Circumferential .. top half lap joint and double riveted
" " bottom " " " double " "
Steel Rivets 7/8 finished diameter 5 1/2" pitch
Holes drilled in place. Safety valves.

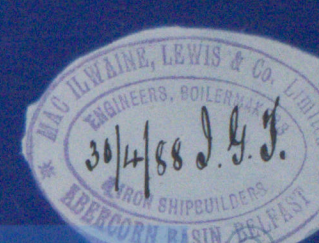
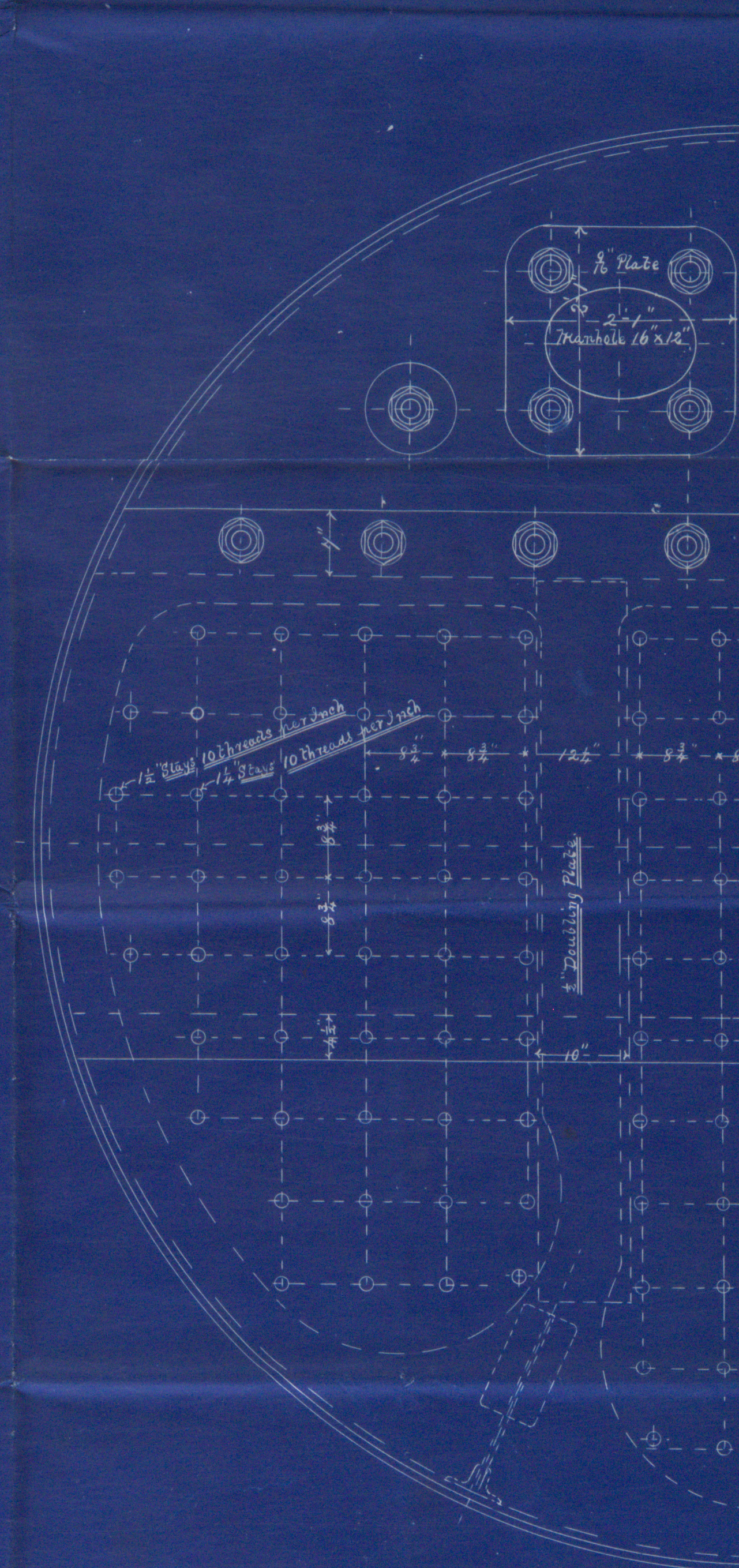
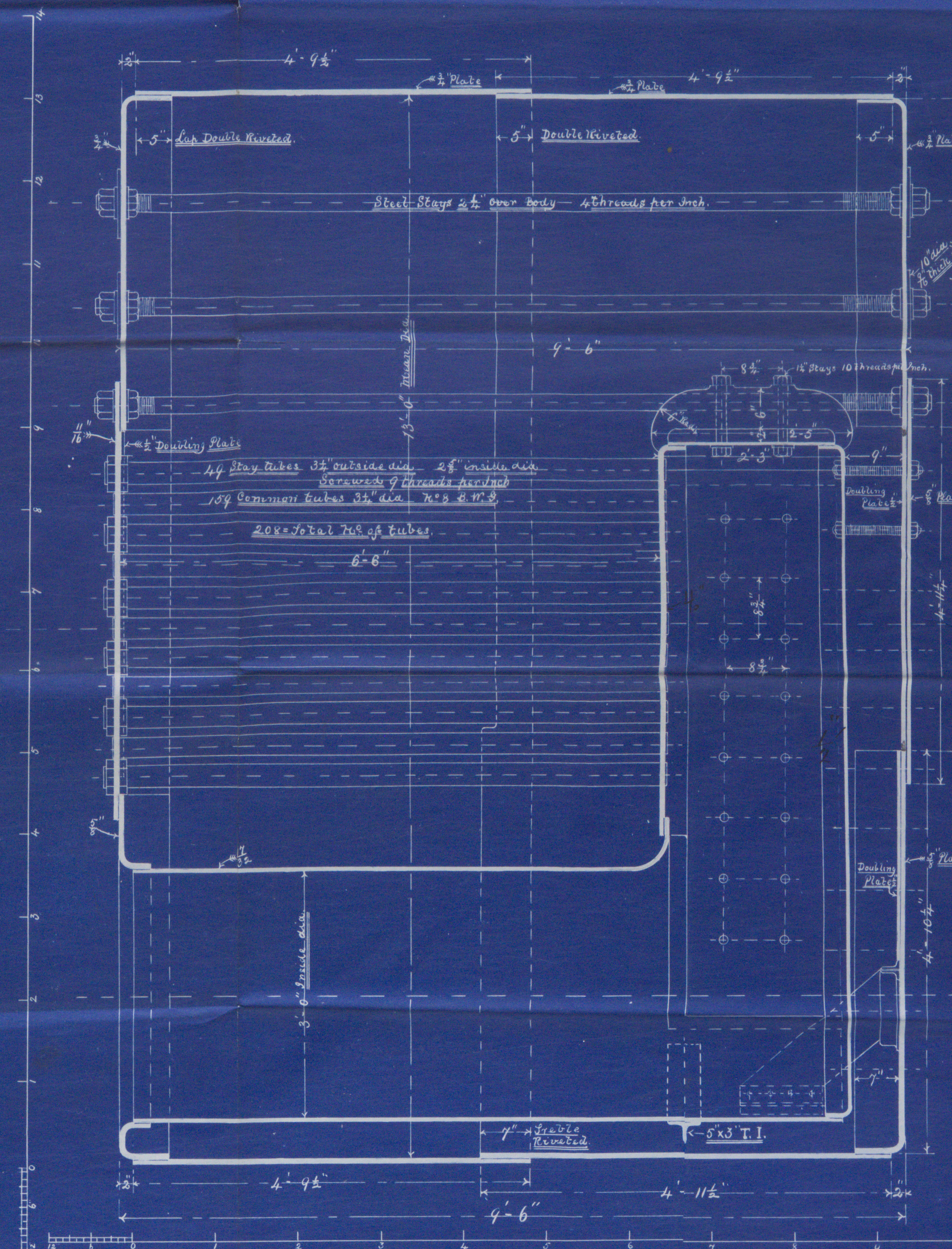
Heating Surface.

Tubes	Sq. Ft. 1150
Furnaces	" 94.25
Top and Sides of Furnaces	" 94.7
Backs	" 86
Back Tube Plate	" 32.3
Total	" 1427.25
Steam Space	C. Ft. 240.1
Water Surface	Sq. Ft. 109.66
Area thro' Tubes	" 10.64
Grate Surface	"

Shell 3/4" thick Steel
Butt Straps 3/4" thick Steel
Rivets 5/8" Pitch



Scale 1" = One Foot.





BEISS-0100



© 2019

Lloyd's Register
Foundation