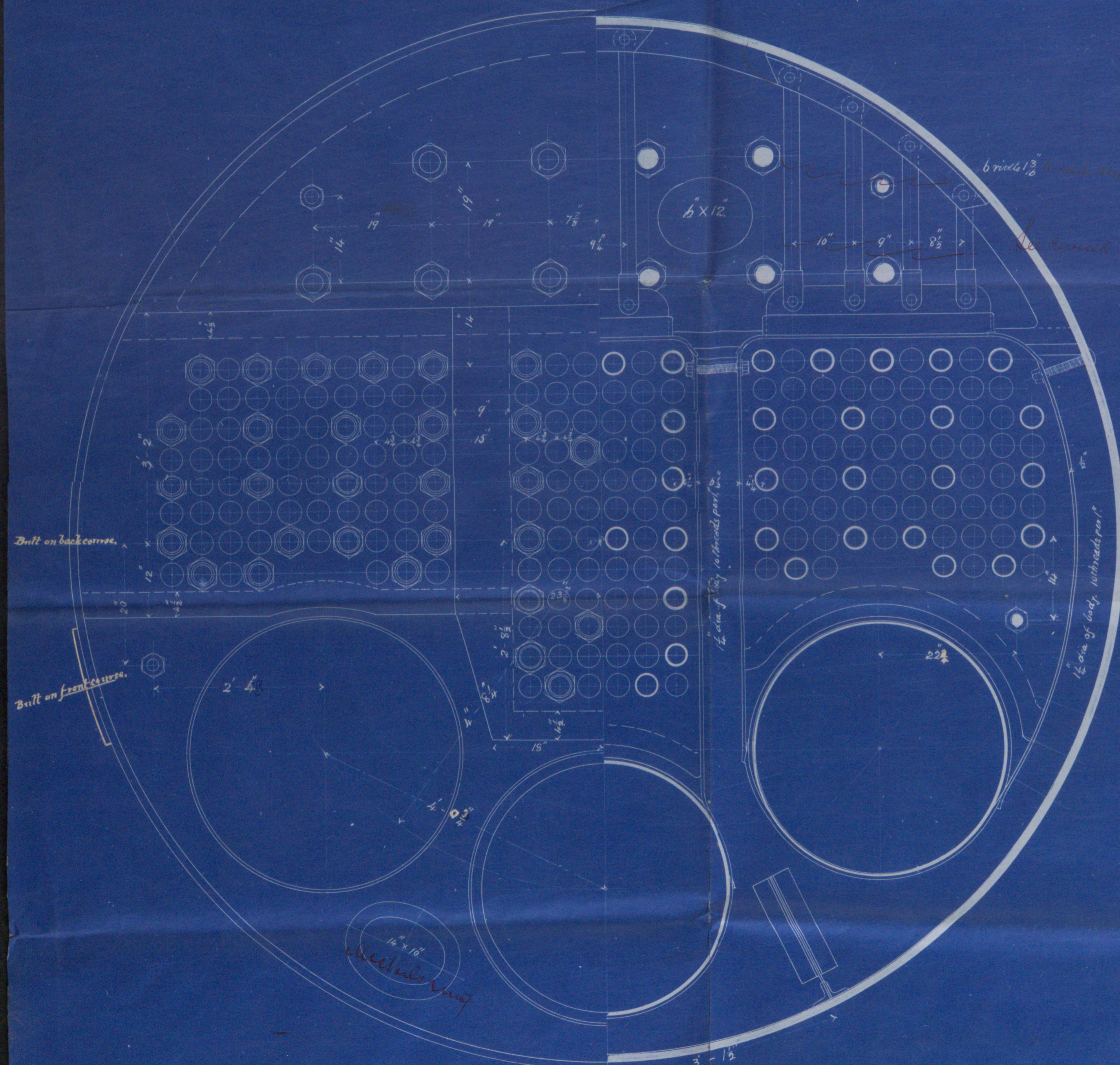


Working press. 160 lbs. [□]

Longitudinal seams double butt strapped & rivets per pitch
Circumferential seams top half lap jointed & double riveted
" " bottom " " " treble "

Steel rivets $1\frac{3}{4}$ " finished dia $9\frac{3}{8}$ " pitch
Holes drilled in place Safety Valves.
HEATING SURFACES.

Shell $1\frac{3}{8}$ thick steel.
Built straps $1\frac{1}{2}$ thick steel.
Rivets $1\frac{3}{4}$ dia.



Scale 1" = 1 foot.

