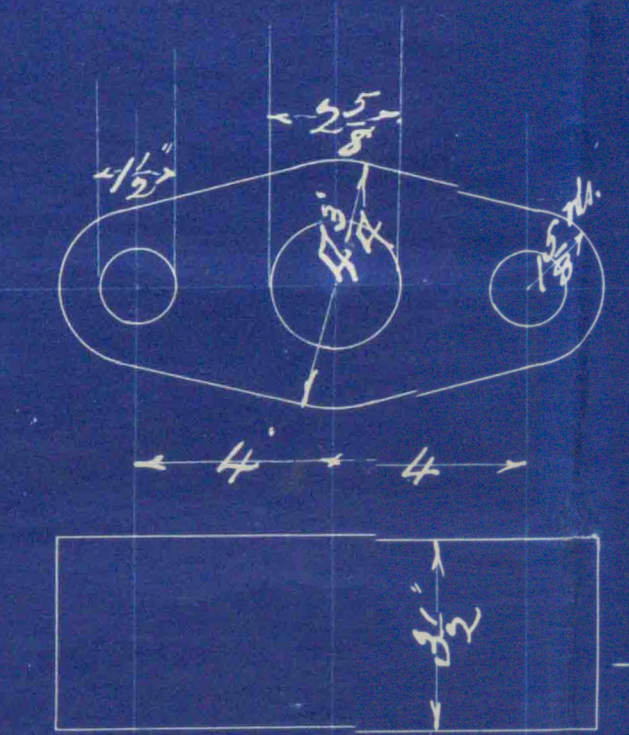
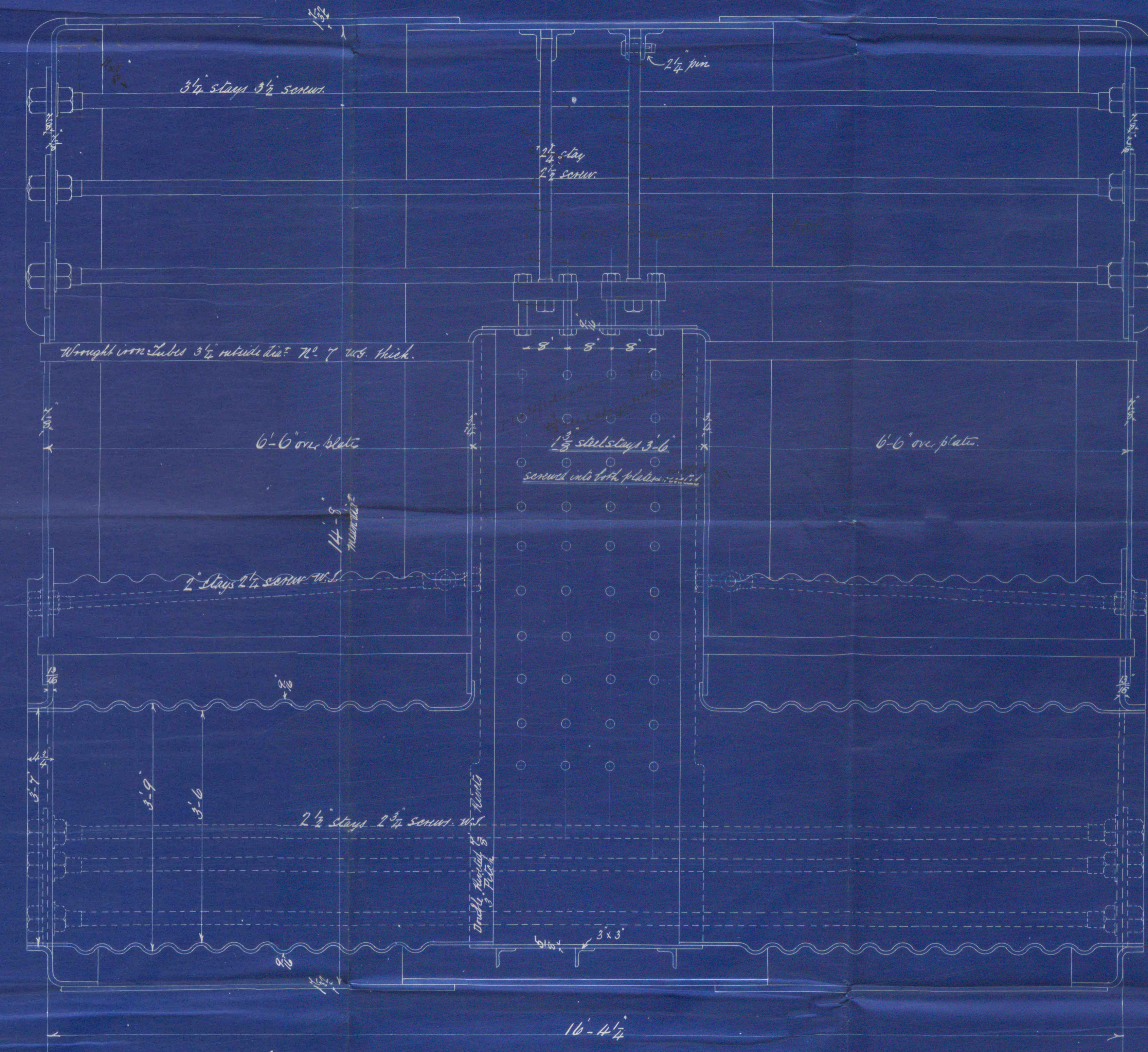
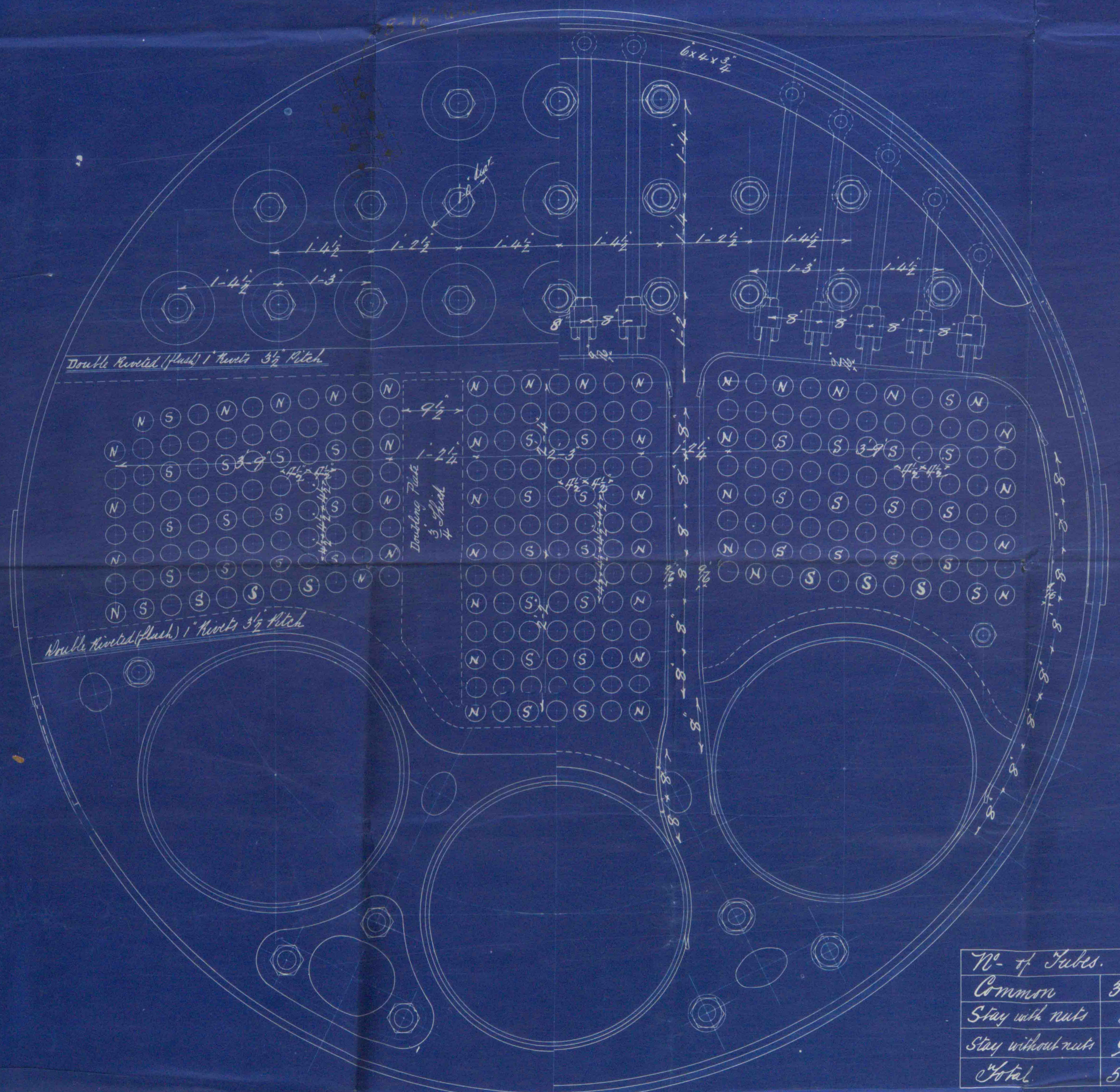


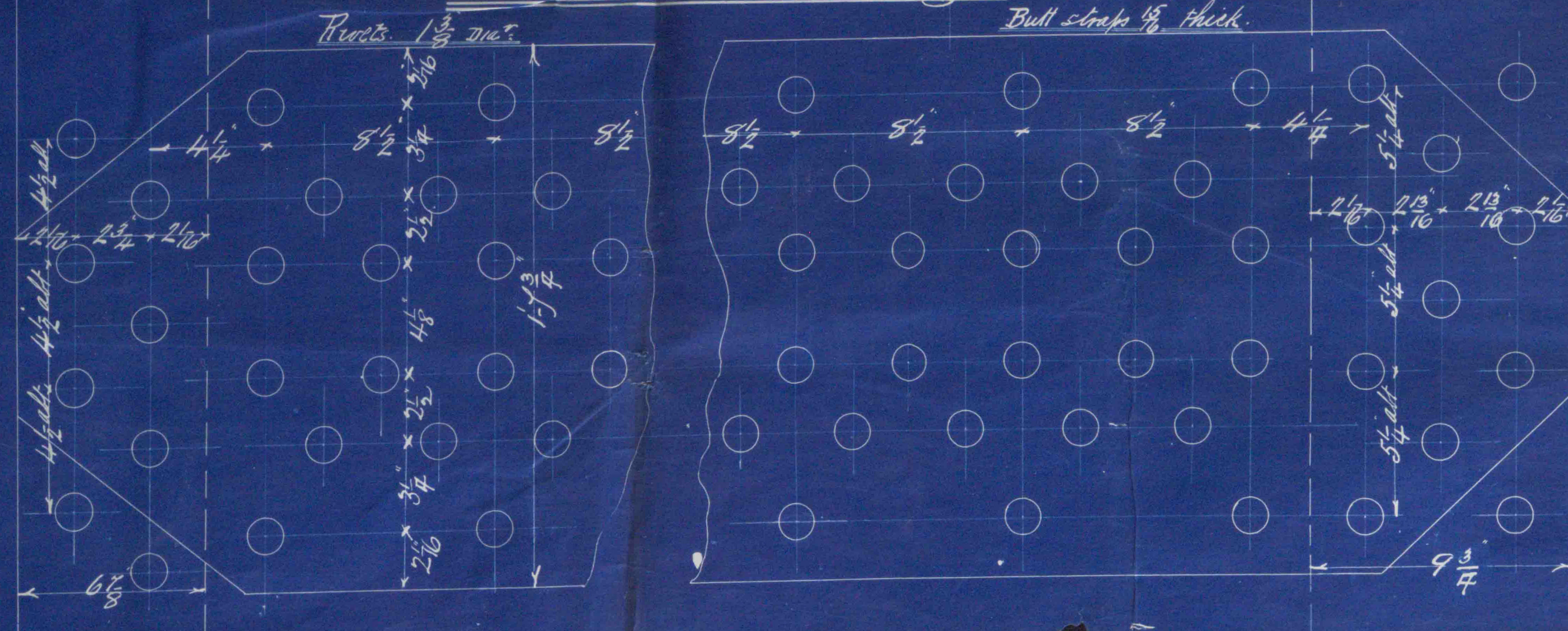
Manhole in Shell
15" dia. Circ. from int.



—Crossheads for Combustion Chamber Stay—



—Shell Riveting—



Note - Common Tubes 3 1/2" outside dia. No. 7 w.t. thick
Stay Tubes 3 1/2" outside dia. No. 7 w.t. thick
Stay Tubes marked S - 3/4" thick N - 3/8" thick with nuts at front ends only.

—Particulars of Riveting—

Shell
Riveting as shown
Double butt straps 1/2" thick
Shell Plate Tests 28 to 29 tons { Strength of Plate 33.5 tons
Circumferential Seams Lap Joints - End seams Double Riveted
Other Joints as shown
End Plates Lap Joints Double Riveted 1" No. 3 1/2" Pitch
Furnaces & Combustion Chambers
Lap Joints - Single Riveted 5/8" No. 2 1/2" Pitch
Double " 3/4" 3" Pitch where noted
All Plates - No. 2 steel. Tubes & Steam space stay of the iron
Combustion Chamber stay of shell not worked in the fire) secured into
plates - riveted - secured 11 threads per inch
All holes drilled in place
Working Pressure 150 lbs. p. sq.
Leak " 370 " " "

—MAIN BOILERS—N^o 207—

Bostonian Repair Co. & S. B. Co.
7/9/18
R

Main Boats
207

"S.S. Bostonian"
Belfast Rep N^o 3464.

BEL55-0014



© 2019

Lloyd's Register
Foundation