

BELSH-0275

[illegible]

|                                |    |
|--------------------------------|----|
| VIEW OF SWELL HOUSE            |    |
| MOORING STATION                | 50 |
| VIEW SWELL HOUSE               | 31 |
| SWELL HOUSE IN 20 FEET         | 55 |
| NO. OF LINES                   | 20 |
| LENGTH OF LINES (PERIODS 1800) | 7  |
| VIEW OF LINES (GALILEO)        | 5  |
| VIEW OF LINE SWELL (IN 20)     | 10 |
| LENGTH OF LINE SWELL           | 11 |

DIWEN 21042

March 21st 1858

Lk 27/4/87.

Tracing No 2306

# Winch Boiler for I.S. No 28. Titanic Bel. Report No. 3422.

## Note

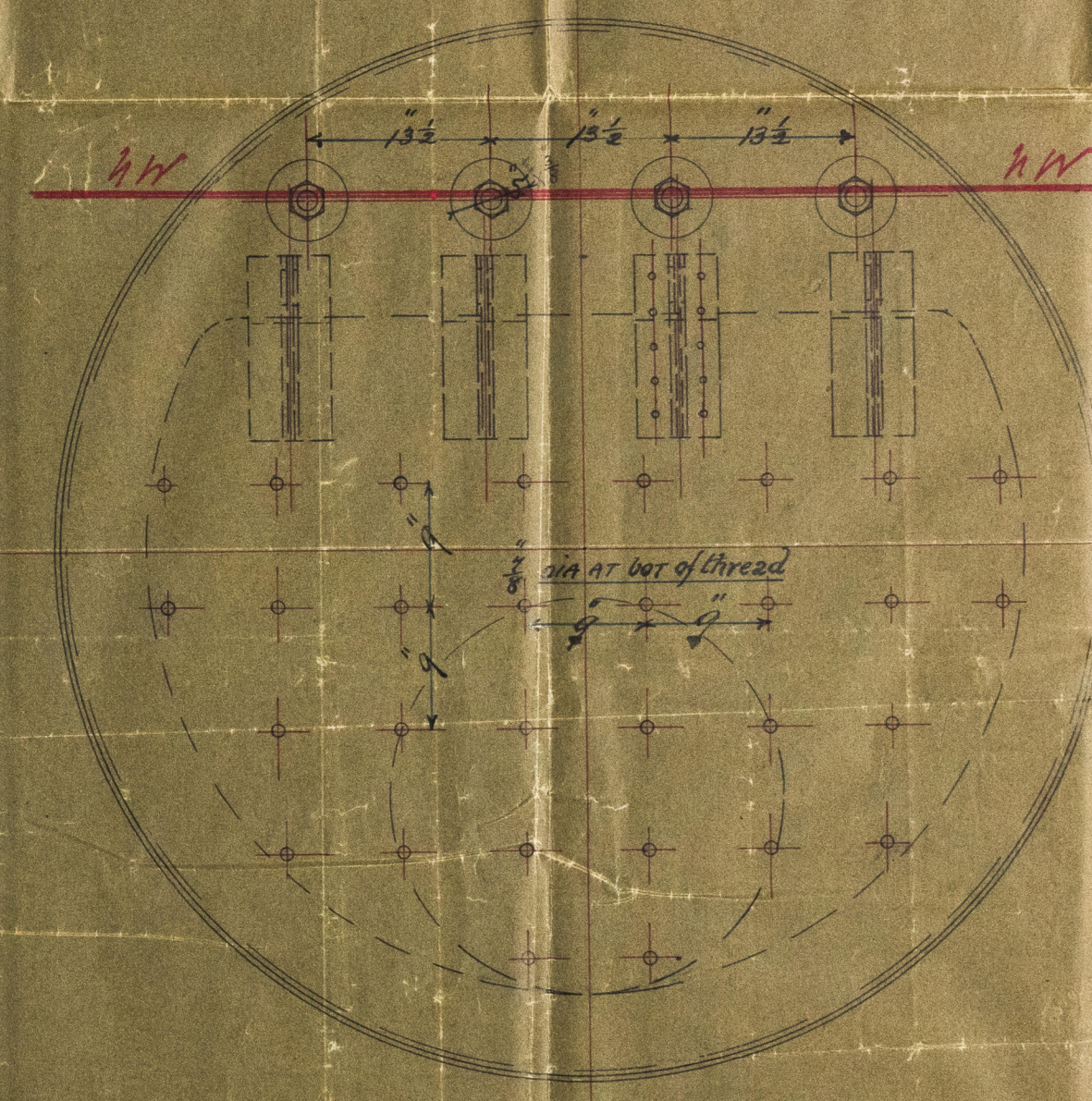
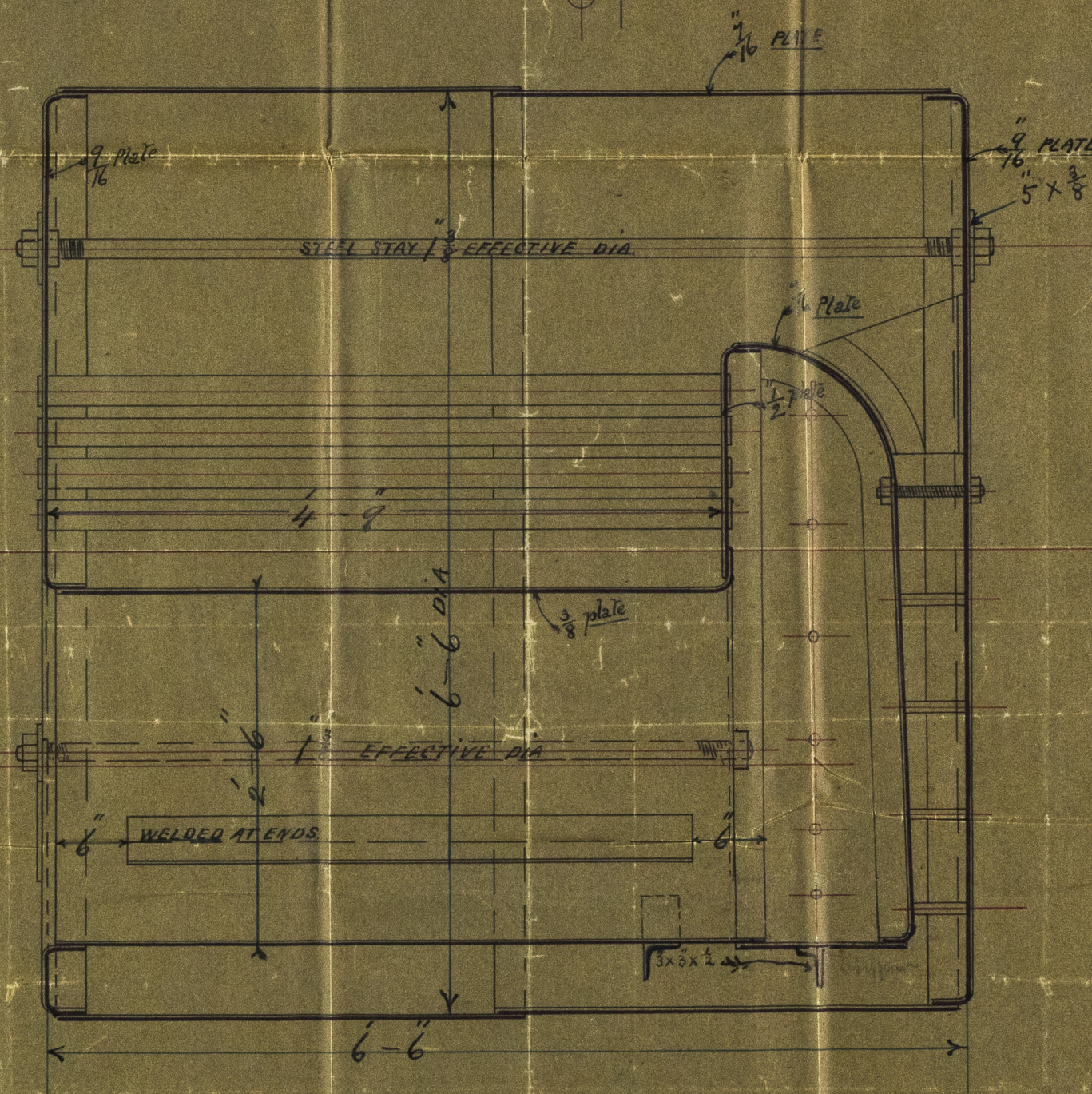
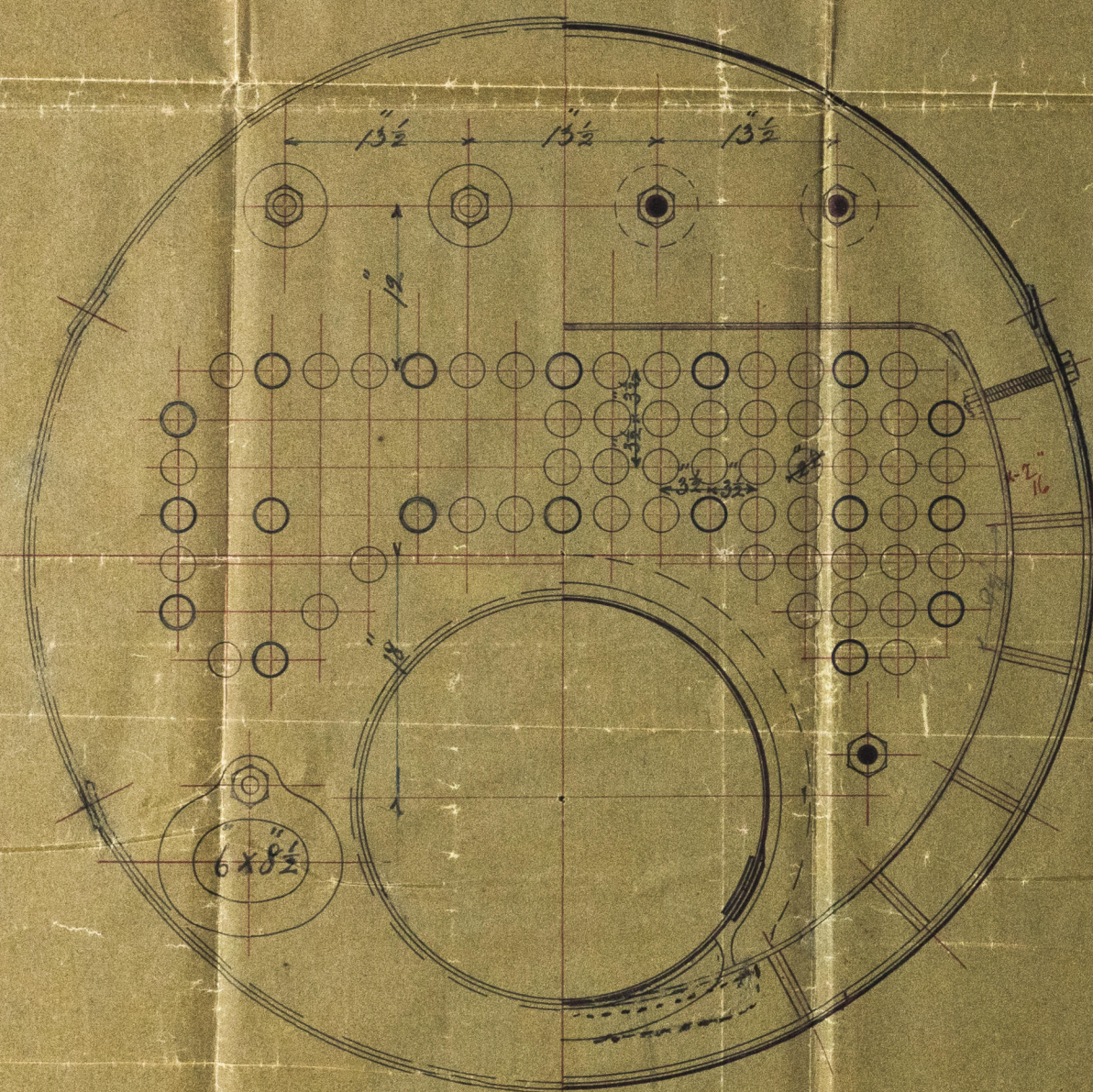
ALL PLATES AND RIVETS TO BE OF SIEMENS MARTIN STEEL.  
CALCULATIONS BASED ON PUNCHED HOLES. HOLES PUNCHED  $\frac{1}{16}$  SMALL & RIMMED OUT.  
LARGE STAYS  $1\frac{3}{8}$  EFFECTIVE DIA DOUBLE NOTTED WITH  
LOOSE WASHERS. THE SCREWED STAYS ARE  $\frac{7}{8}$  DIA EFFECTIVE  
SCREWED INTO BOTH PLATES AND NOTTED AT FISH END  
THE TUBES ARE IRON ORDINARY TUBES. NO 10 B.W.G.  
STAY TUBES ARE 2" INT. DIA &  $\frac{1}{8}$  THICK EFFECTIVE  
ALL STAYS OF STEEL. A MANHOLE IN SHELL WITH  
SHORTER AXIS LONGITUDINALLY. "N. N. PATENT"  
DOORS THROUGHOUT. DOUGLASS PLATE 2-6 X 2-0 X  $\frac{1}{16}$

Shell waterway  
Scale 1" = 1 foot.



## DIMENSIONS

|                                  |        |
|----------------------------------|--------|
| LENGTH OF FIRE BARS.             | 4'-0"  |
| AREA OF FIRE GRATE (IN SQ. FT.)  | 10'-0" |
| DIA OF TUBES (OUTSIDE)           | 2 1/2" |
| LENGTH OF TUBES (BETWEEN RIVETS) | 4'-0"  |
| NO OF TUBES                      | 88     |
| SURFACE OF TUBES IN SQ. FEET     | 273    |
| TOTAL HEATING SURFACE            | 317    |
| WORKING PRESSURE                 | 60 LBS |
| DIA OF SAFETY VALVES             |        |



PROBOS  
SAVED 1898  
WROTHAM  
FABRICATED BY

Scale 1" = 1 foot.

25/4/87 J.S.S.

IR

© 2019  
Lloyd's Register  
Foundation