

See Cr.
to Bel: 16/2/87.

11. 2. 87.
Hamm.



Not fitted thus
at first. as approved
J.S.
Belfast
15.2.87

9/s. 11.2.28

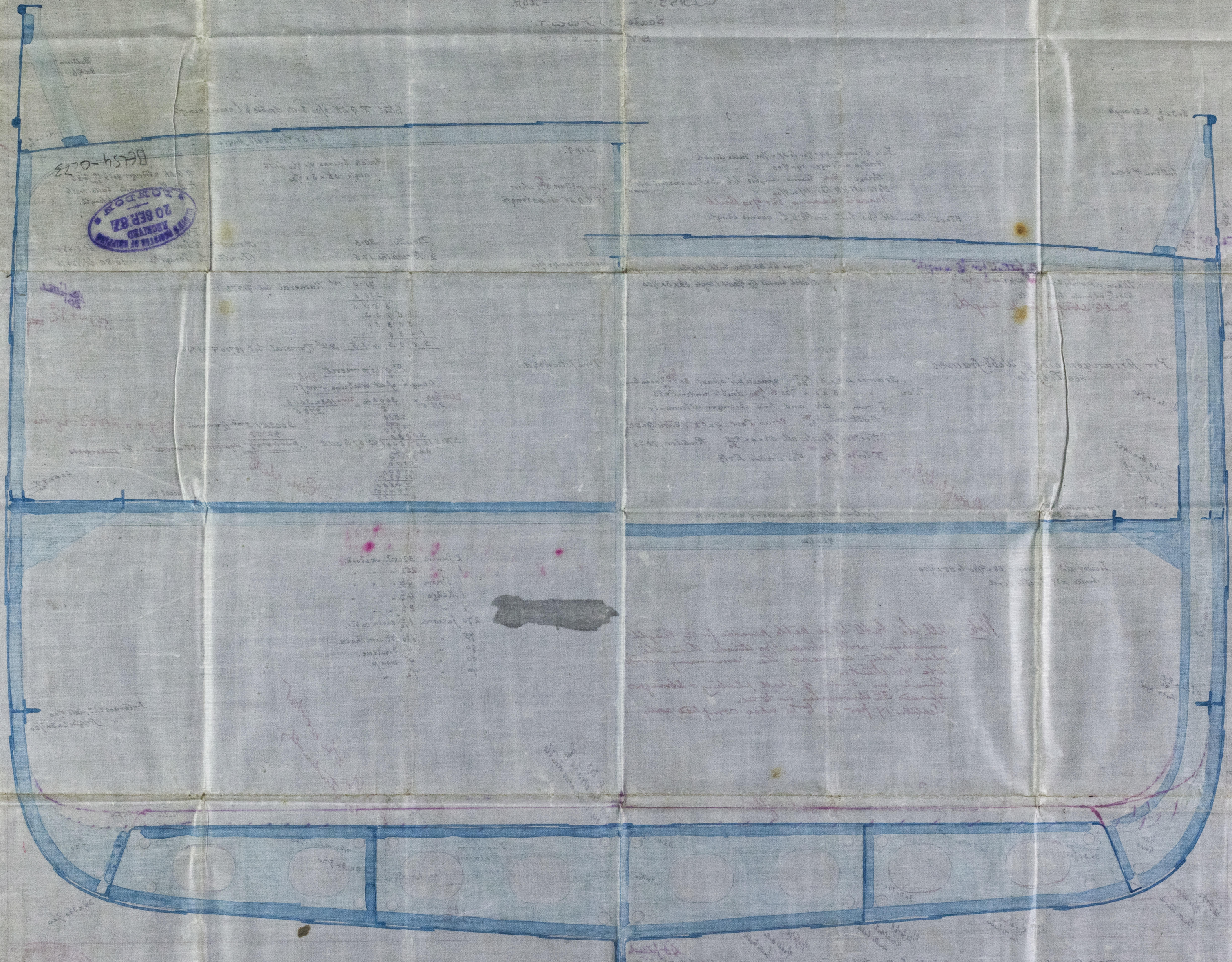
Seate 1/2 - 1 foot.



Lloyd's Register
Foundation

BEL 54-0273 (1/2)

22 Nov 28
 Length 27' 0" 280.0
 Breadth 12' 0" 120.0
 Depth 10' 0" 100.0
 R. of W. 100.0
 Class 100.0
 22 Nov 28

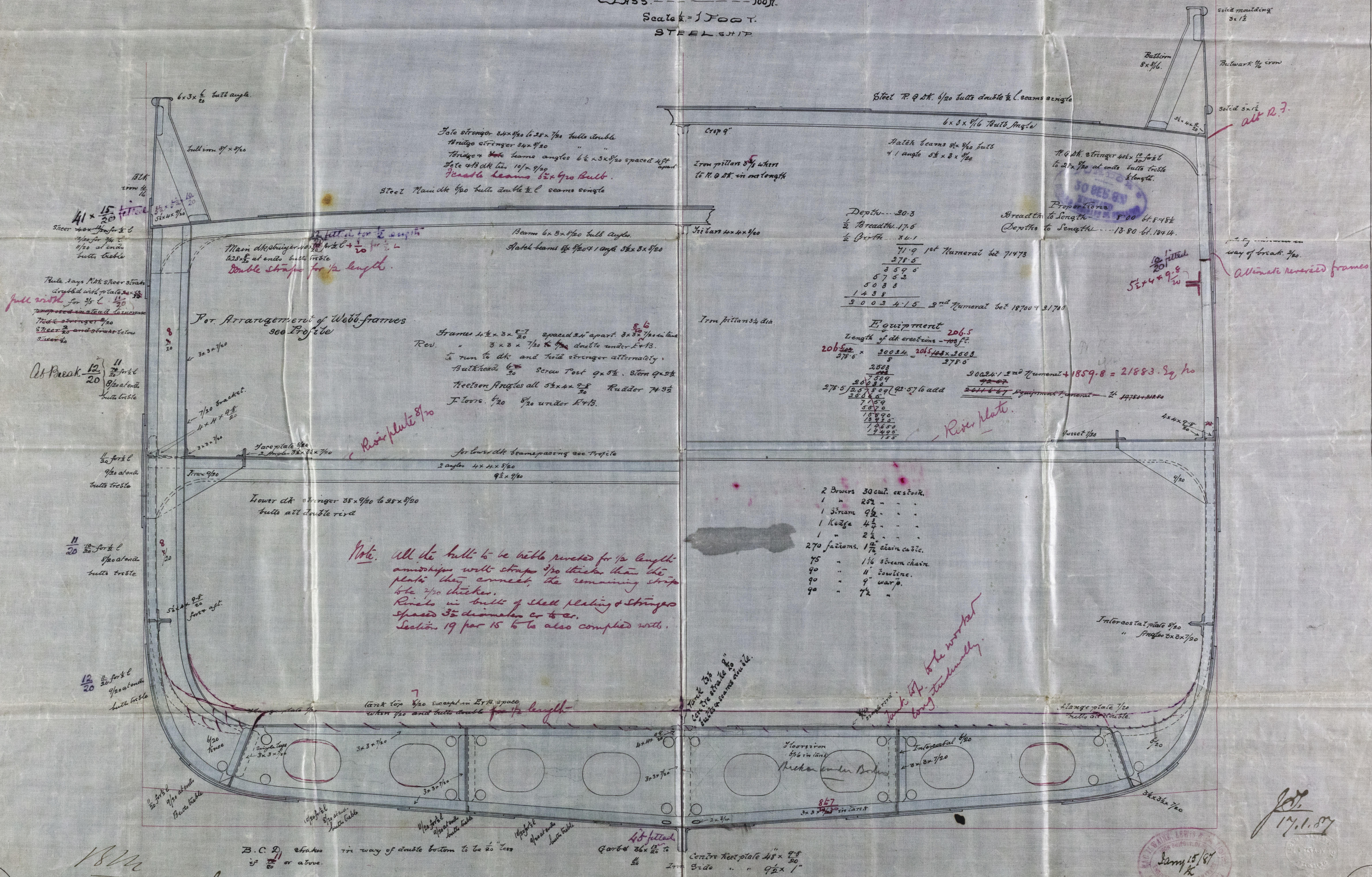


20 DEC 28
 20 DEC 28
 20 DEC 28

20 DEC 28
 20 DEC 28
 20 DEC 28

20. 1. 87.

S. S. ¹⁰⁰Titanic
Belfast Reports N^o 3416 (Freeboard)



Depth of double bottoms
increased from 3.3 to 3.9
Feb 4-5

Jan 15/87
K

© 2019

Lloyd's Register
Foundation

BELSH - 0273 (2/2)