

29 FEB. 88
LONDON

BELSH-0198

LLOYD'S RECEIVED
29 FEB. 88
SHIPPING

LLOYD'S RECEIVED
13 MAR. 88
LONDON
LLOYD'S REGISTER
SHIPPING



© 2019

Lloyd's Register
Foundation

RECEIVED
APR 30
LONDON

18.3.86.
See Lr to Del. Curd?
9/5/86 relating to
Shippers in hold

Midship Section of S^o 39 U. S. 360' x 42' 4 1/2" x 28' to floors
to class 100 A. 1. 3 Decked Steel (Scantlings are 10% less than those for iron.)

Scale 1/2 inch = one foot.

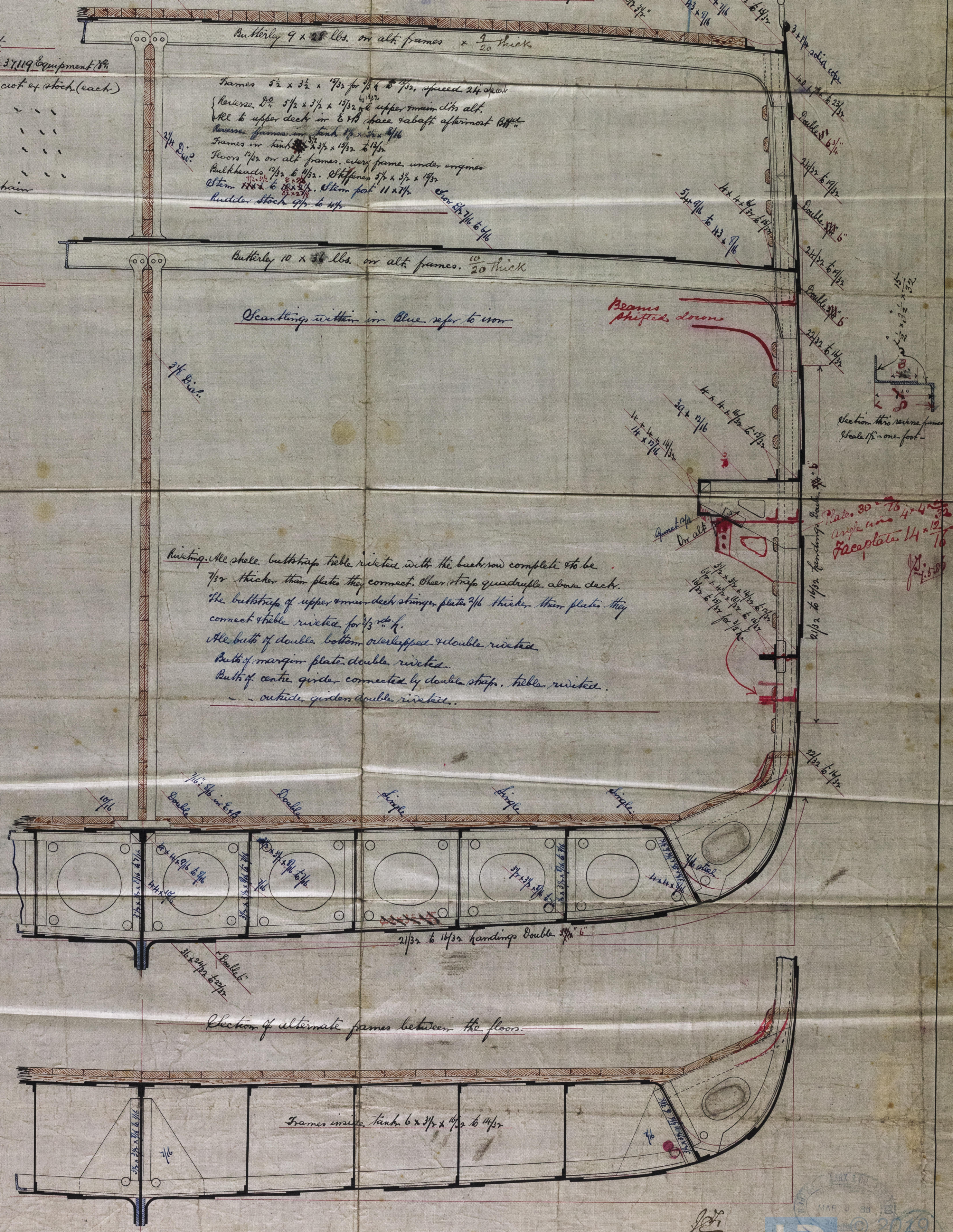
Star of Victoria
Belfast Report on Freeboard No. 3300

S.S. City of Dublin. Belfast Rep. No. 3399
for alterations in scantlings & revised section.

Proportions Depth to Upper 8 1/2 11.81
Main 13.71
Breadth 8.49

Sumerals 1/2 Breadth 21.18
1/2 Girth 47.45
Depth 30.16
98.79 - 7 = 91.79 x 360 = 33,044 Scantling 8"

- Equipment
- 98.79 x 360 = 35,364 Equipment 8"
2. Power Anchors 40 cwt. each (each)
- 1 " 34 " "
- 1 Steam " 12 " "
- 1 Hedge " 6 " "
- 1 " 3 " "
- 300 fathom 2 1/2" Power Chain
- 90 " 1 3/4" Steam "
- 120 " 1 3/8" Towline
- 90 " 10 Marf
- 90 " 9 "



180m
18/3/86

9.3.86

