

UNDERWRITERS' REGISTRY FOR IRON VESSELS.

ESTABLISHED 1862.

UNITED WITH
~~CONDUCTED BY A JOINT COMMITTEE OF UNDERWRITERS, SHIP OWNERS, AND SHIP BUILDERS.~~
LLOYD'S REGISTER OF BRITISH AND FOREIGN SHIPPING IN 1885.

~~CHAIRMAN—ALFRED HOLT, Esq.~~

~~DEPUTY CHAIRMEN—ROBERT N. DALE, Esq., HENRY H. GRAYSON, Esq.~~

CERTIFICATE OF CLASS, A1*

Name and Description

Steel Screw Steamer Iran.

Official Number

91289.

Port of Registry

Liverpool.

Name and Address of Owner

Edward Bates & Sons, Liverpool.

Name of Builder and where and when Built

Harland & Wolff, Belfast, 1mo. 1886.

REGISTERED PARTICULARS.

Length *380.35* Feet.

Tonnage, Nett *2316.94*

Breadth *45.0* Feet.

Do. under Deck *3426.94*

Depth *27.4* Feet.

Do. Gross *3530.73*

Rig *Schooner.*

ENGINES (if any).

No. of Engines.	Description	When Made.	Name and Address of Makers.	Diameter of Cylinders.	Length of Stroke.	No. of horses' power (combined.)
<i>Three</i>	<i>Triple expansion, compound</i>	<i>Engines 1886.</i>	<i>Harland & Wolff, Belfast.</i>	<i>28, 43 & 71.</i>	<i>51.</i>	<i>400.</i>

This Vessel was built under the Inspection of the Surveyors to the Underwriters' Registry for Iron Vessels, and in her Hull, Decks, Rigging, Spars, Sails, Anchors, and Chains, is a First-class Vessel, fit to carry dry and perishable Cargo, and has been awarded the above character, **A1*** subject to Survey, in accordance with the Rules.

Chairman.

of the Committees of Classification.

Secretary.

2, White Lion Court, Cornhill,
13 Exchange Buildings,

London, *26th March 1886.*



Lloyd's Register
Foundation

BE153-0218 (1/2)

PARTICULARS OF OUTFIT.

PUMPS.			WINDLASS.		
<i>Five 5" dia. for Hold, Stalls and Bilges, pumped by Engines.</i>			<i>Emission, Walker & Thomson, Brod. (Steam.)</i>		
BOATS		COMPASSES.	ANCHORS.		CHAINS.
No.	Length. Feet.	No.	1 Bower	<i>41. 0. 0.</i>	<i>300.</i> Fathoms <i>236.</i>
Long Boat...		Steering <i>One</i>	2 Bower	<i>40. 3. 20</i>	Fathoms
Life Boat...	<i>Two</i> 25	Standard Azimuth <i>One</i>	3 Bower	<i>35. 2. 23</i>	
Pinnace...		Bridge <i>One</i>	4 Bower		
Cutter...	<i>One</i> 21	Mast	Stream	<i>16. 2. 10</i>	
Gig...	<i>One</i> 21	Cabin Boat <i>Two</i>	1 Kedge	<i>8. 0. 11</i>	Inches.
Dingy...		Spare <i>One</i>	2 Kedge	<i>4. 1. 2</i>	Fathoms.

PERIODICAL SURVEYS.

THE FIRST PERIODICAL SURVEY of this Vessel has been satisfactorily completed

at

LIVERPOOL, Secretary.

THE SECOND PERIODICAL SURVEY of this Vessel has been satisfactorily completed

at

LIVERPOOL, Secretary.

THE THIRD PERIODICAL SURVEY of this Vessel has been satisfactorily completed

at

LIVERPOOL, Secretary.

THE FOURTH PERIODICAL SURVEY of this Vessel has been satisfactorily completed

at

LIVERPOOL, Secretary.

THE FIFTH PERIODICAL SURVEY of this Vessel has been satisfactorily completed

at

LIVERPOOL, Secretary.

THE SIXTH PERIODICAL SURVEY of this Vessel has been satisfactorily completed

at

LIVERPOOL, Secretary.

NOTICE

Vessels due for Periodical Survey, which leave the United Kingdom without being duly Surveyed and passed by the Surveyors to this Registry, will have their Class suspended until such Survey has been properly made. Notice of suspension of Class will be given in the First Monthly Supplement issued after the sailing of the Vessel.

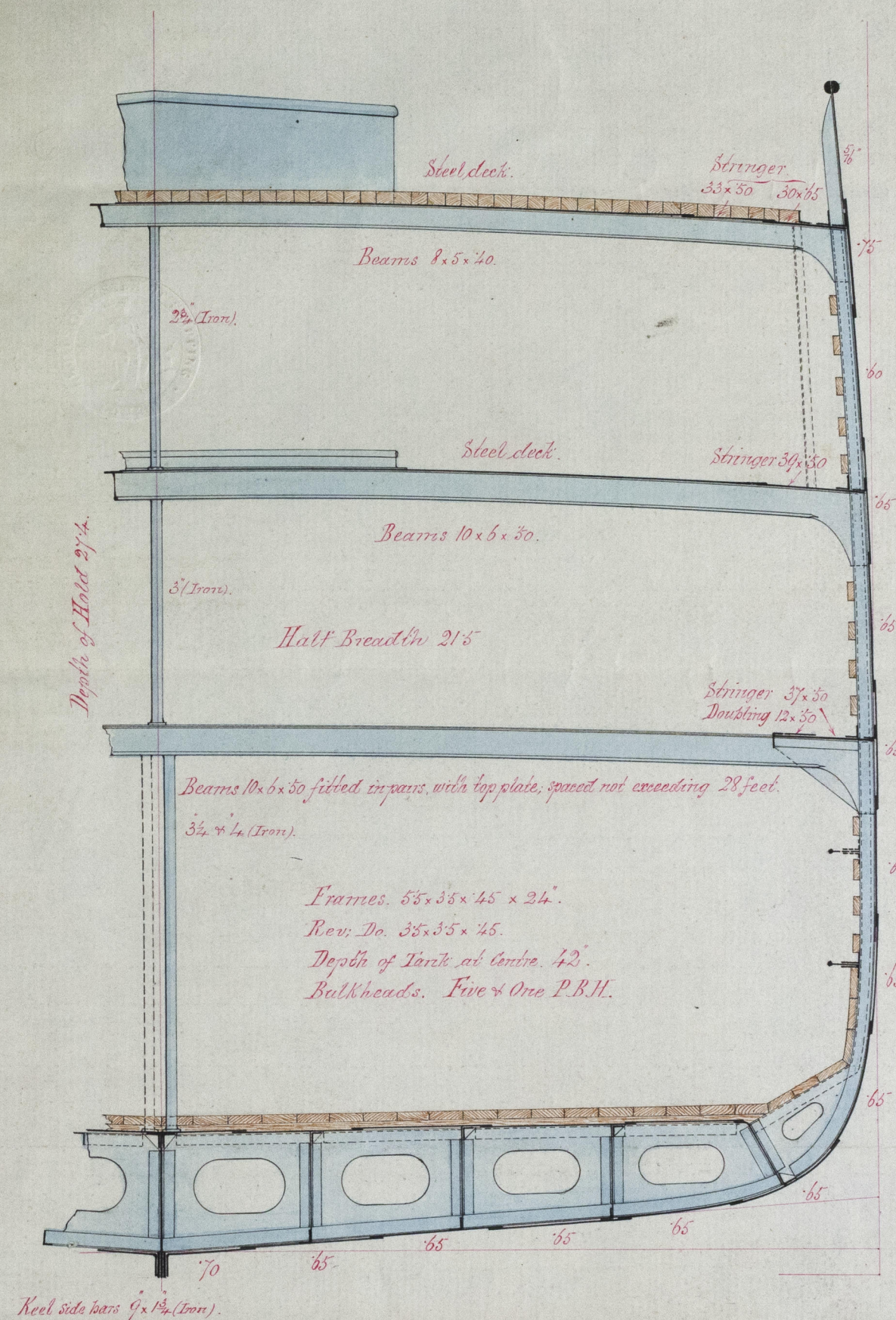
Vessels remaining abroad for two years after they become due for Periodical Survey will have their Class suspended until they have been re-surveyed.

65 per cent. of immersion occurs at a mean draft of <i>22.68</i> feet.	Brought down from <i>31</i> feet ...	<i>100.03</i>
70 per cent. of immersion occurs at a mean draft of <i>24.22</i> feet.	Displacement from <i>31</i> feet to Main or Upper Deck, including thickness of Deck, Sheer and round of Beam	<i>75.1</i>
75 per cent. of immersion occurs at a mean draft of <i>25.75</i> feet.	Assessed value of erections above Deck ...	<i>18.1</i>
80 per cent. of immersion occurs at a mean draft of <i>27.28</i> feet.	TOTALS ...	<i>118.35</i>

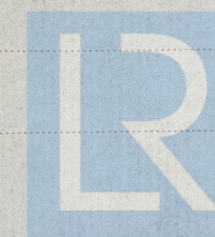
DISPLACEMENT SCALE.

Depth of Immersion in feet.	Displacement in tons of 35 cubic feet.	Percentage of Immersion.
1		
2		
3		
4		
5		
6		
7		
8	<i>214.1</i>	<i>18.09</i>
9	<i>250.8</i>	<i>21.19</i>
10	<i>287.4</i>	<i>24.31</i>
11	<i>324.8</i>	<i>27.44</i>
12	<i>362.1</i>	<i>30.60</i>
13	<i>399.6</i>	<i>33.76</i>
14	<i>437.3</i>	<i>36.95</i>
15	<i>475.2</i>	<i>40.15</i>
16	<i>513.2</i>	<i>43.36</i>
17	<i>559.5</i>	<i>46.58</i>
18	<i>589.5</i>	<i>49.81</i>
19	<i>627.8</i>	<i>53.05</i>
20	<i>666.2</i>	<i>56.29</i>
21	<i>704.6</i>	<i>59.54</i>
22	<i>743.1</i>	<i>62.79</i>
23	<i>781.6</i>	<i>66.04</i>
24	<i>820.1</i>	<i>69.29</i>
25	<i>858.7</i>	<i>72.56</i>
26	<i>897.3</i>	<i>75.82</i>
27	<i>935.9</i>	<i>79.18</i>
28	<i>974.5</i>	<i>82.34</i>
29	<i>1013.1</i>	<i>85.60</i>
30	<i>1051.7</i>	<i>88.86</i>
31	<i>1090.3</i>	<i>92.12</i>
34		
36		
38		
40		

PARTICULARS OF AMIDSHIP SCANTLINGS.



LONDON, LIVERPOOL,



Chief Surveyor.

188
Lloyd's Register
Foundation
BEL33-0218 (2/2)