

S.S. City of Bombay
Belfast Report No. 3173

and Forecastle

— Sketch showing proposed Bridge Deck stringer —
— in No. 30 S.S. — 40 class 100 A. 1. 3 dkd. —
Scale $\frac{1}{2}$ inch = one foot. —

Die plates

Lt. Col. Bel:
11/10/84.



Double Angle Reinforcing
in way of Forecastle

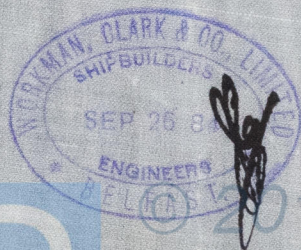
Alternate
Rev. has intended
to Forecastle deck
etc.

Double Sheer strake

See letter of this date

L. B.
11/10/84

J. L.
9.10.84



Lloyd's Register
Foundation