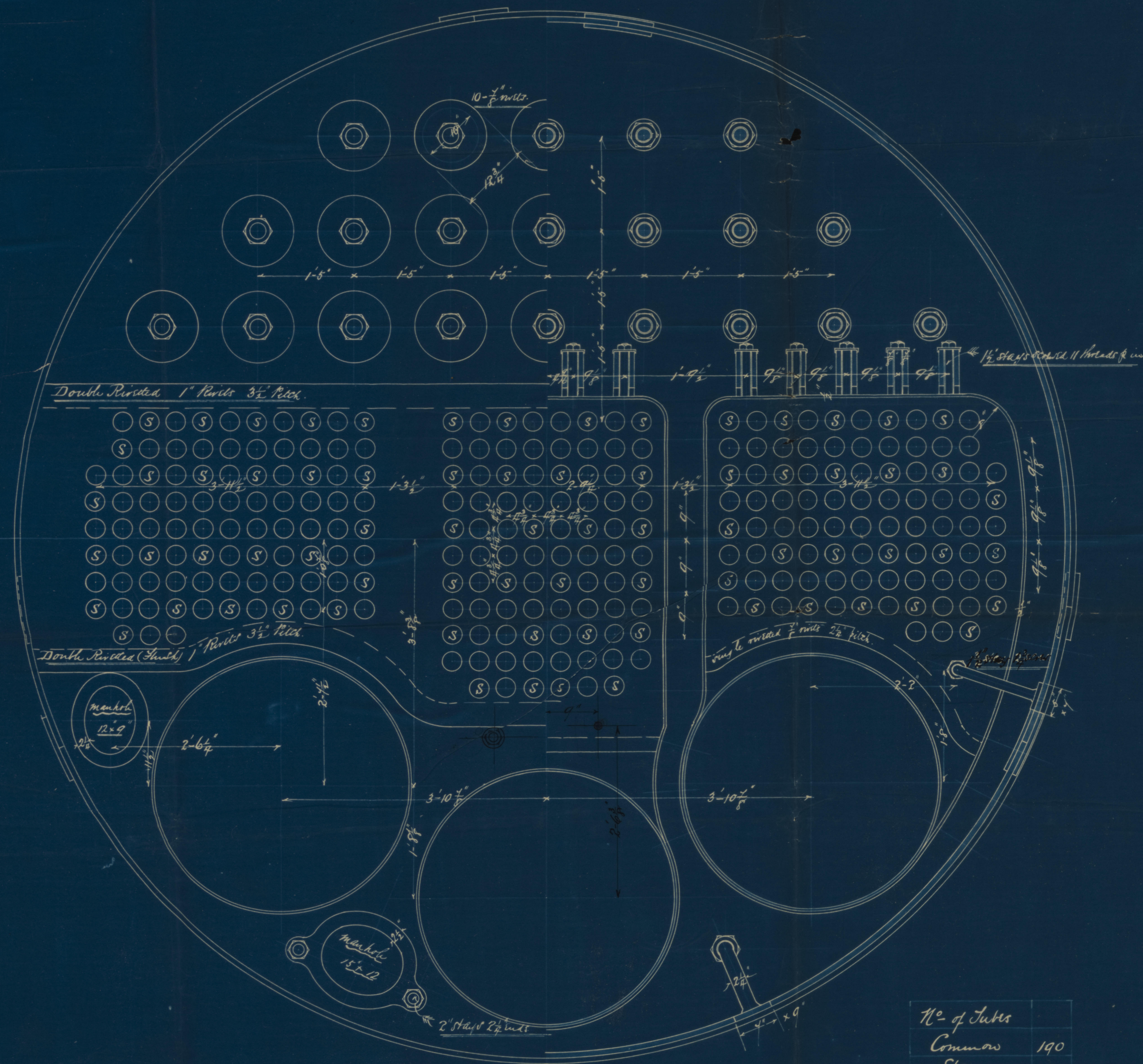
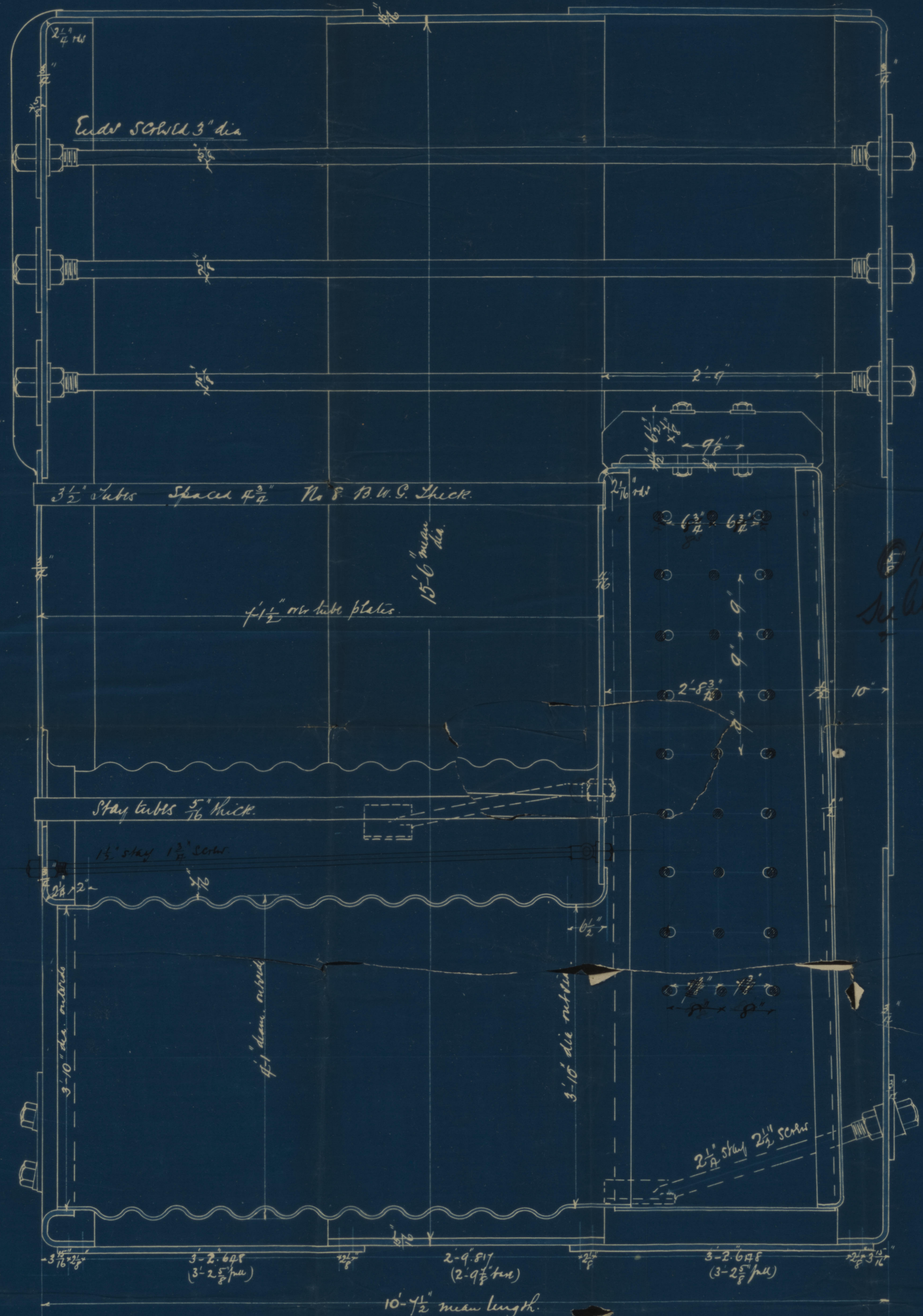


11 "Horsehead"

DR
Boiler No. 165



No. of Tubes	
Common	190
Stay	74
Total	264



Particulars of Riveting.
Shell
 Longitudinal Seam Double Butt straps 1/8" thick
 Double Rivets 1 1/2" Pitch 4.53" pitch
 Strength of Plate = 74.1 %
 " Rivet = 94.5 %
 Circumferential Seam Lap Seam Double Riveted
 1 1/2" Pitch 4 1/2" pitch
 Furnace Lap Seams Corrugated
 Furnace + Combustion Chambers single rivet.
 1 1/2" Pitch 2 1/2" Pitch
 End Plates Double Rivets 1" Pitch 3 1/2" Pitch
 All Seals drilled All Plates + Rivets of Steel
 Working Pressure 90 lbs per sq in
 Hydraulic Test Pressure 120 lbs per sq in

BOILERS N° 165

Scale 1 inch to one foot.

Main Bales
Holland Woolfs 165
L. P. Horn Head
Belfast Report
No 3053