

RECEIVED APR 23 1883
RECEIVED APR 23 1883
RECEIVED APR 23 1883

APR 23 1883
HARLAND & WOLFE
SHIPBUILDERS & ENGINEERS
LONDON

Dr. to Bel.
9/4/83.
21/4/83
9/5/83.
15/5/83.

MIDSHIP SECTION

Nº 165

IRON SS "HORNHEAD"

32.0' x 37' x 28'-8" TOP OF KEEL

TO CLASS 100A1 AT LLOYDS

SPAR DECK RULE

SMALL BRIDGE HOUSE

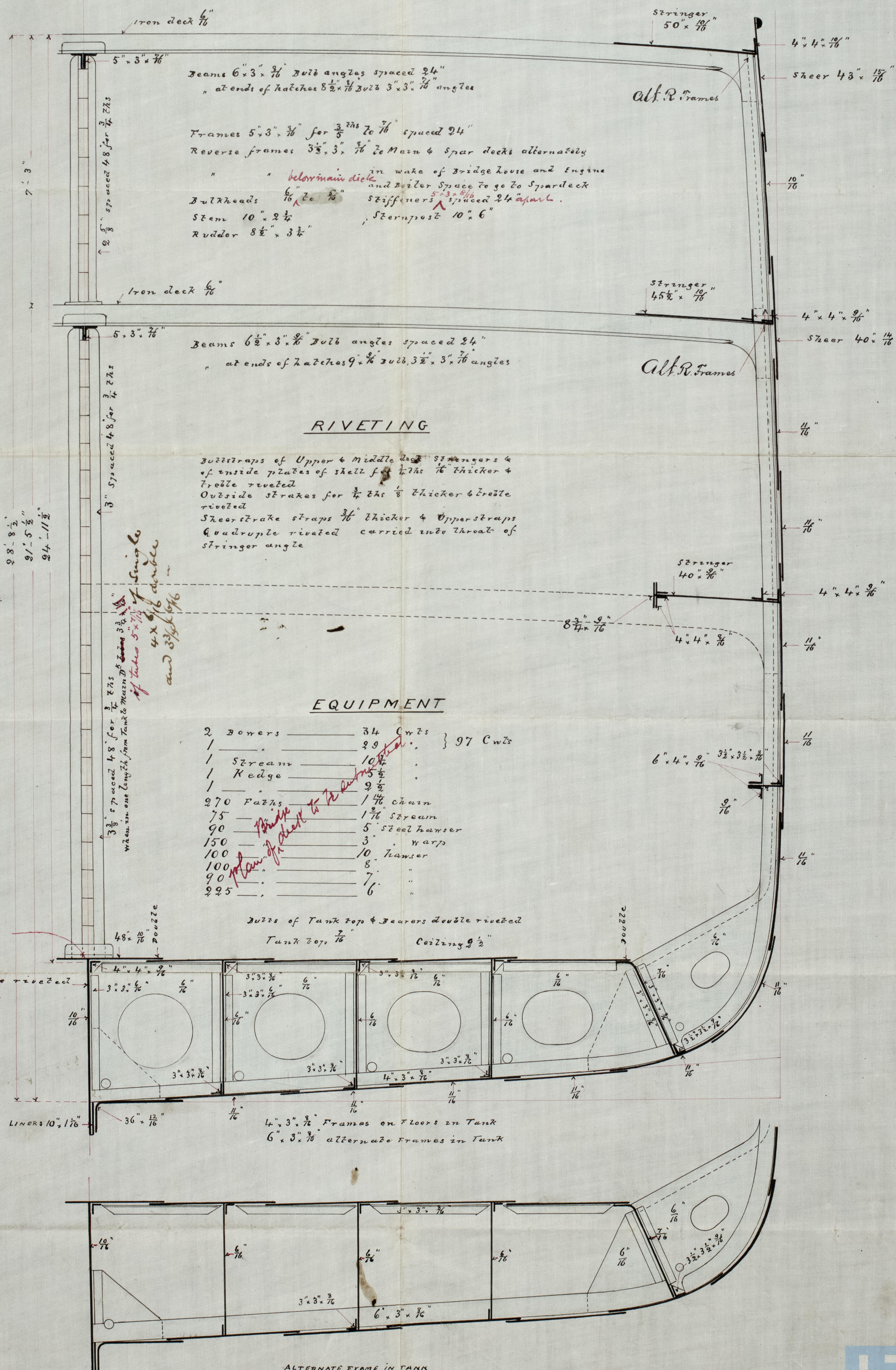
NUMERALS

18.5 + 36.66 + 21.45 = 76.61 FRAME NUMBER
76.61 x 320 = 24515 PLATING "
18.5 + 43.92 + 23.7 + 320 = 29158 EQUIPMENT "

8.64 BREADTHS 14.9 DEPTHS

S.S. "Hornhead"

Belfast Report Nº 3053



H.L.
4/4/83

4.2.83