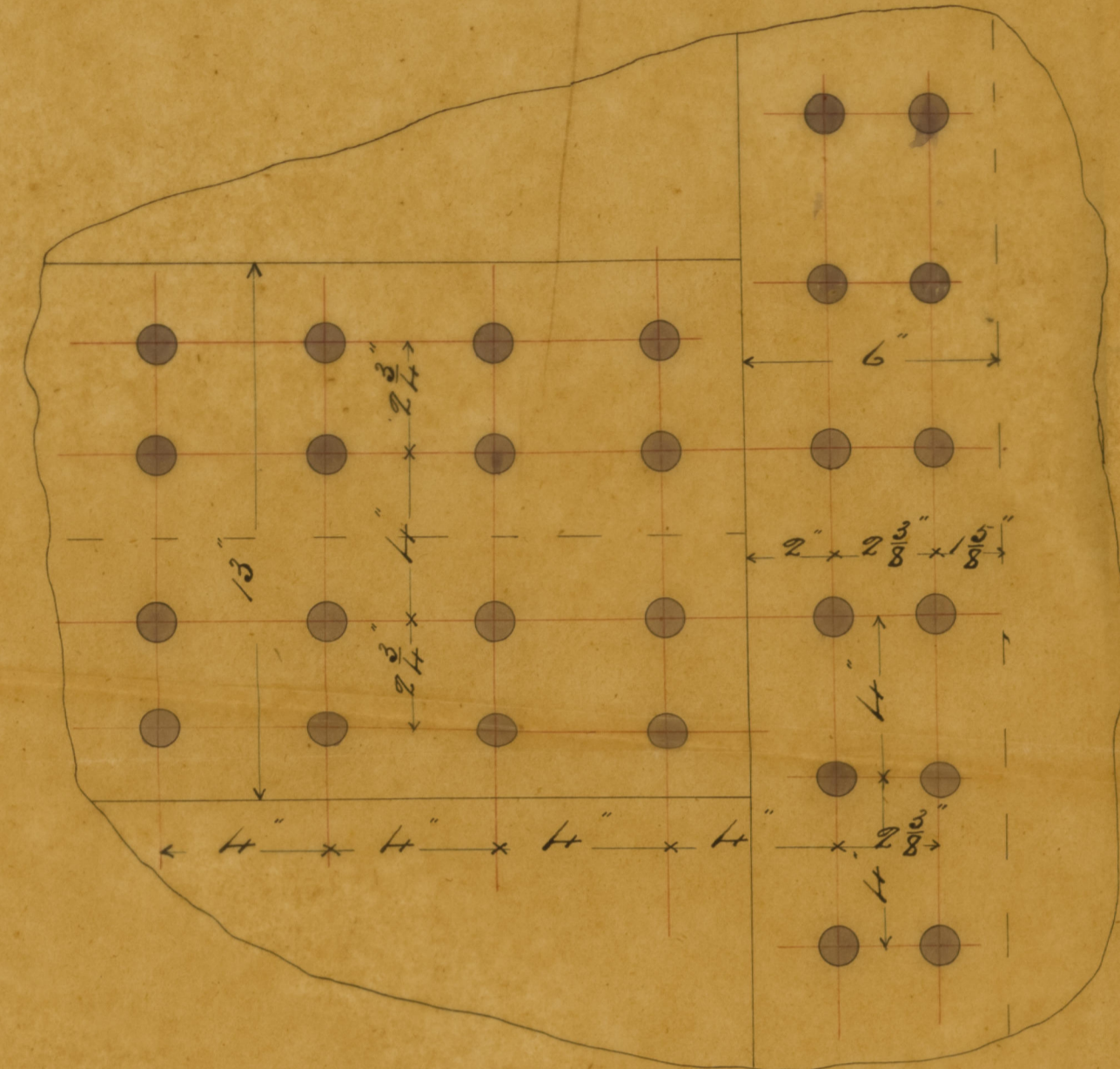


23/1/83



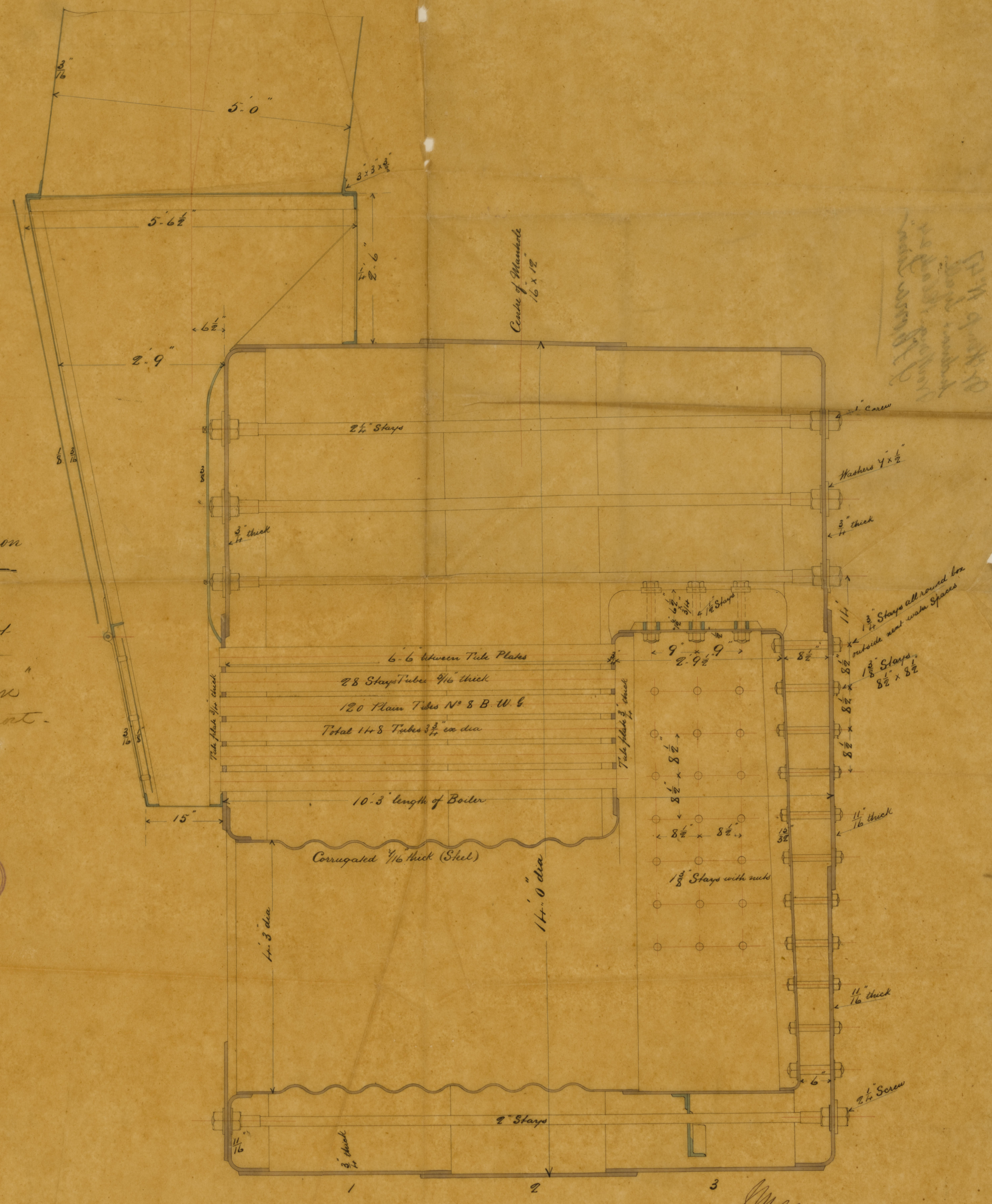
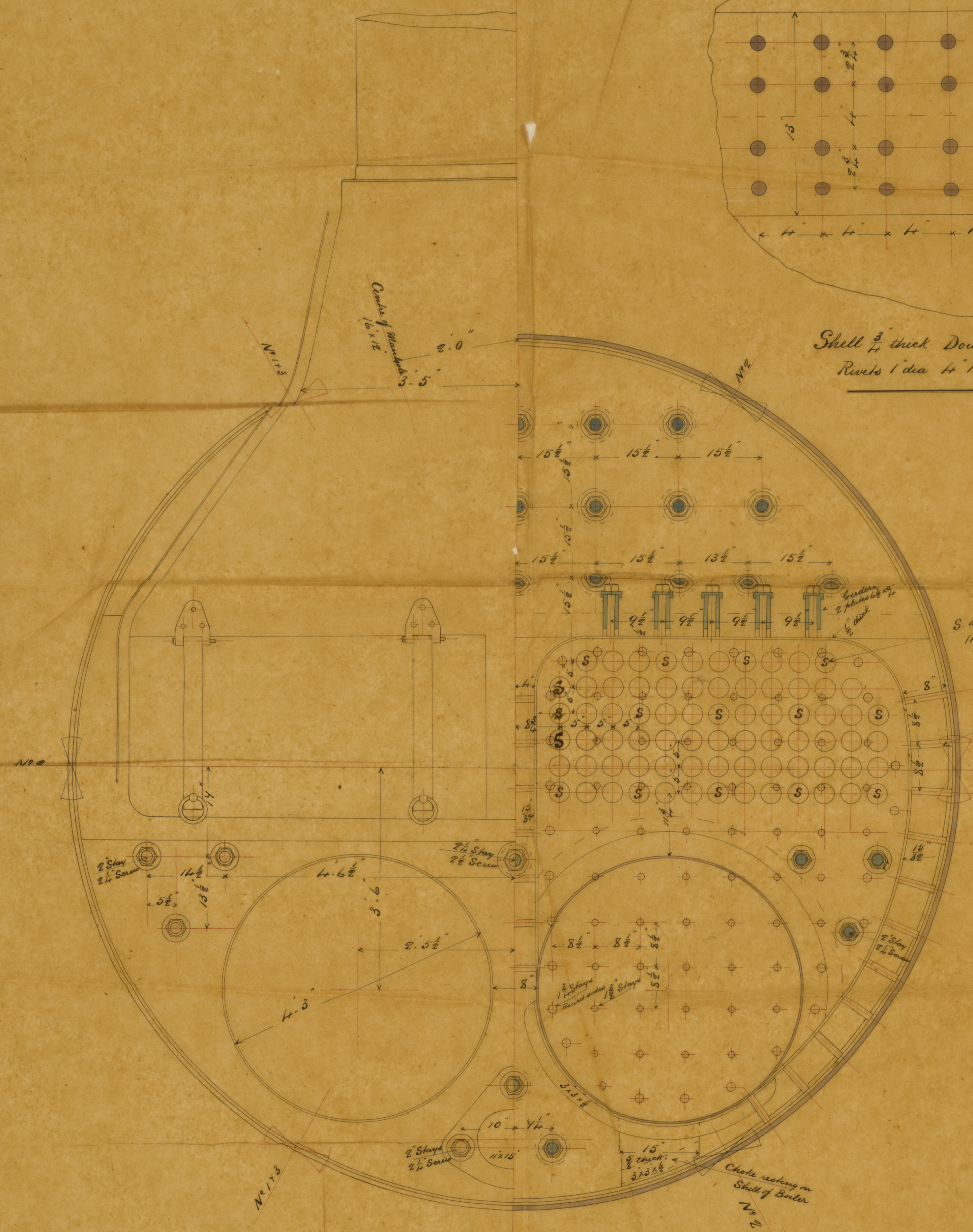
Shell $\frac{3}{4}$ inch thick Double Butt Straps $\frac{9}{16}$ inch thick
Rivets 1 inch dia 4 inch Pitch (Shell) All holes drilled $1\frac{1}{2}$ inch

Boiler No 44

Pressure 80 lbs per sq inch
All Plates of Steel Stays of Iron

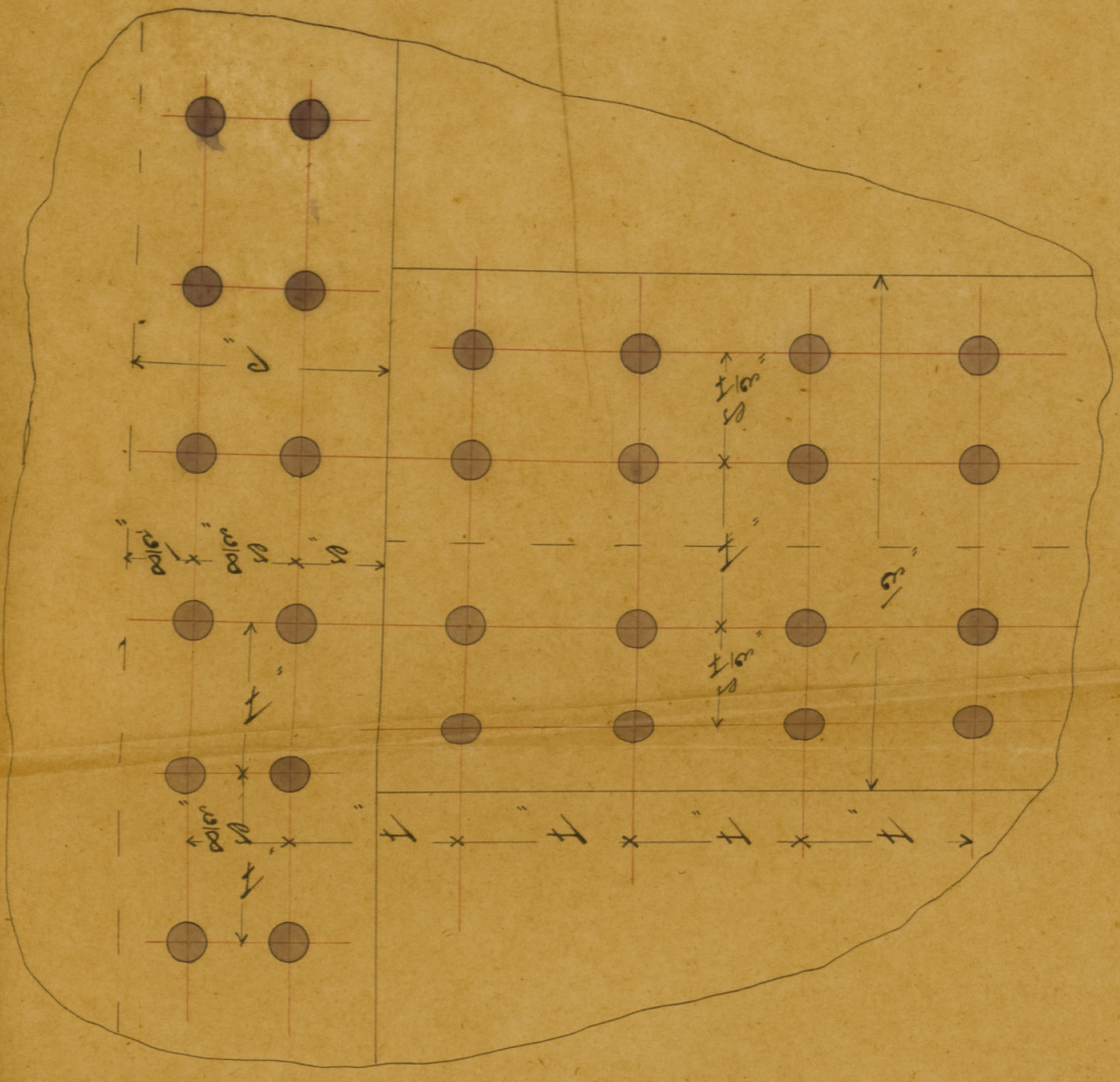
Scale 1" = one foot

S. S. Corra Linn
Glasgow & Belfast Repat.
Belfast No 3047



W. H. Glasgow
20/8/83

Small handwritten note in the top right corner.



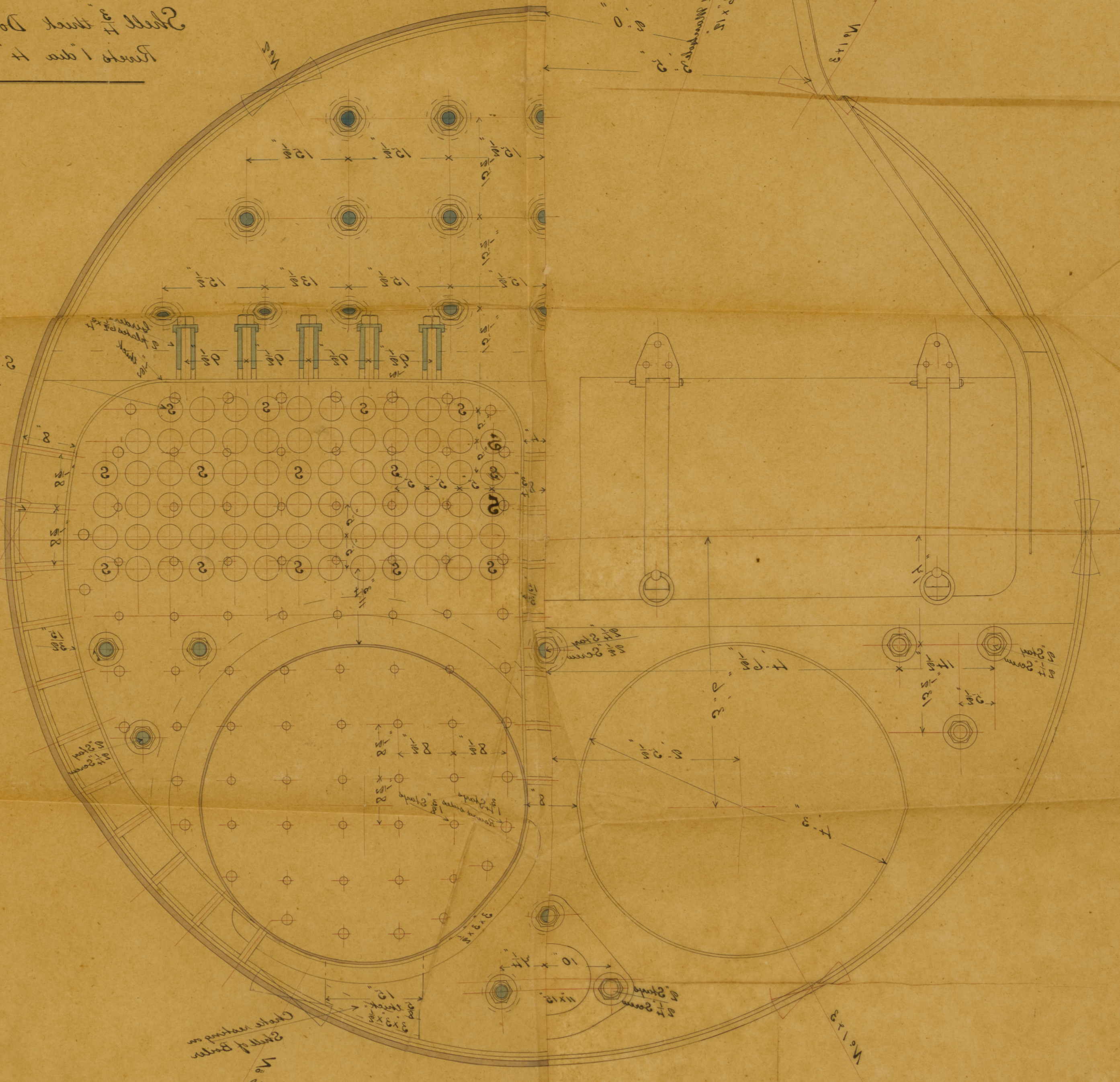
Shell 3 inch Double Butt Straps 1/2 inch
Rivets 1 inch 12 Rivets (Steel) All holes drilled 1/2

Boiler No 41

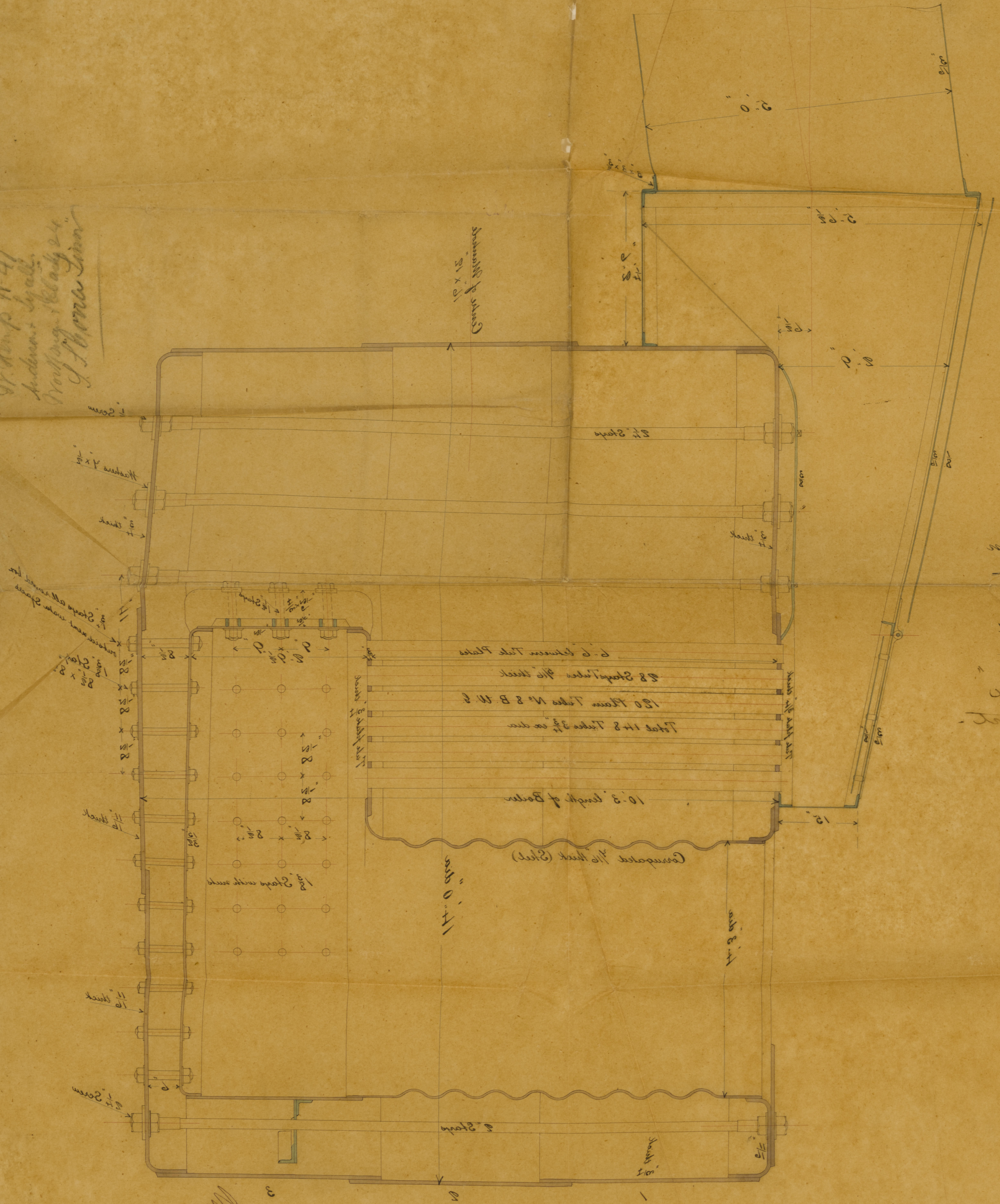
Pressure 80 lbs per sq inch
All Plates of Steel Straps of Iron

Scale 1" = 10 feet

J. C. Brown
Proprietor
No 304



Boiler No 47
J. C. Brown
Proprietor



Handwritten signature or note at the bottom left of the left page.