

TRACING N° 843

S. L. Saint Kevin
Belfast Report N° 2979

SHIP N° 18

Lt. to Belfast
2/10/82.

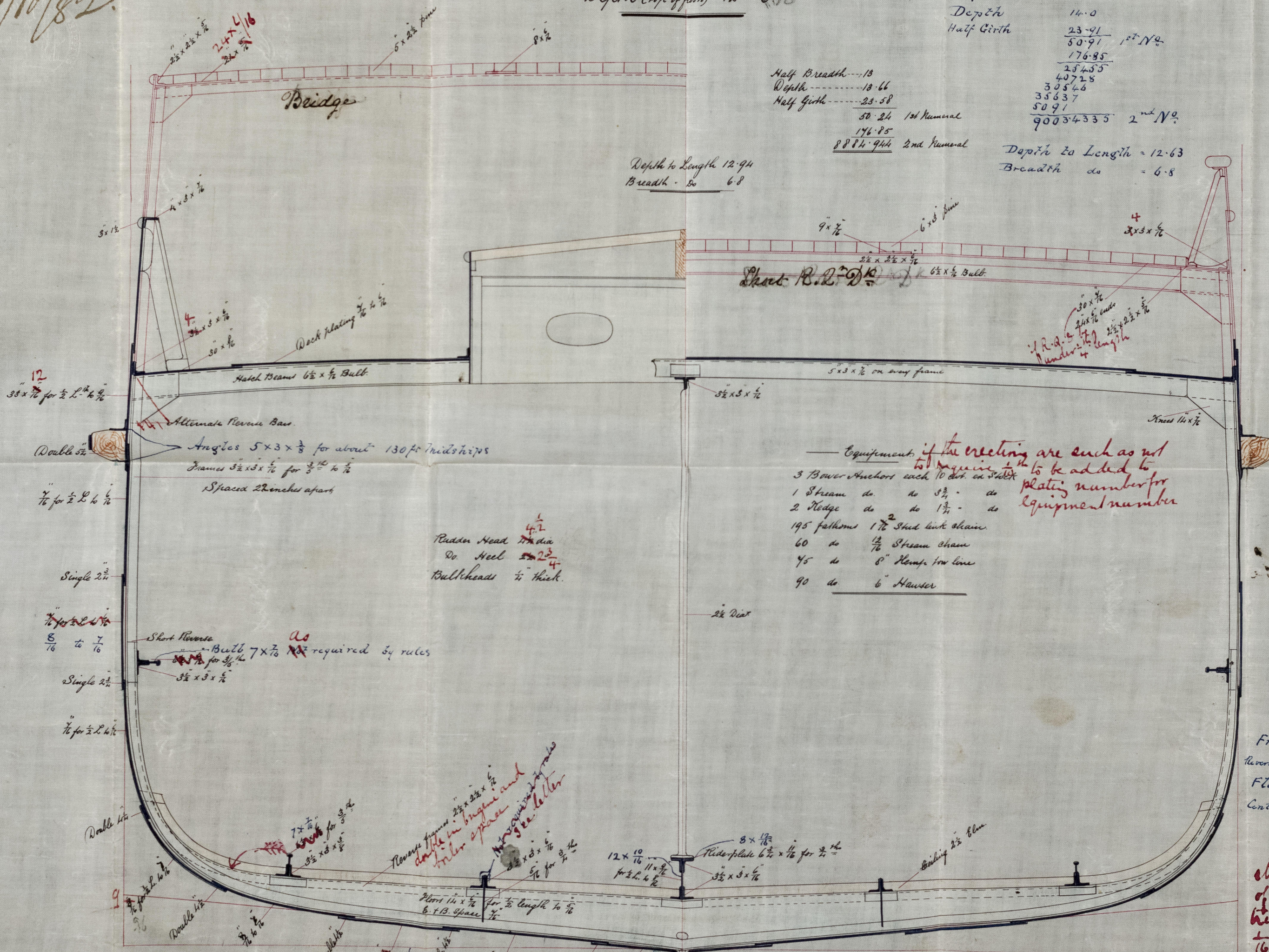
Length $\frac{54}{178} - 0$
Breadth $26 - 0$
Depth (top of floor) $12 - 6\frac{10}{16}$

Half Breadth $13 - 0$
Depth $14 - 0$
Half Girth $\frac{23-41}{50-91}$ 1st N°

Half Breadth 13
Depth $13-66$
Half Girth $\frac{23-58}{50-24}$ 1st Numeral
 $\frac{176-85}{8884-944}$ 2nd Numeral

Depth to Length $12-63$
Breadth do $6-8$

Depth to Length $12-94$
Breadth do $6-8$



Equipment if the erecting are such as not to require to be added to plating number for equipment number

- 3 Bower Anchors each 10 tons in weight
- 1 Stream do do 3 1/2 - do
- 2 Rodge do do 1 1/2 - do
- 195 fathoms 1 1/2 inch link chain
- 60 do 1 1/2 inch Stream chain
- 45 do 8 inch Rump for line
- 90 do 6 inch Hawser

Rules Proposed

Frames $3 \times 3 \times \frac{3}{8}$ $3 \frac{1}{2} \times 3 \times \frac{3}{8}$
Transverse Frames $2 \frac{1}{2} \times 2 \frac{1}{2} \times \frac{5}{16}$ $2 \frac{1}{2} \times 2 \frac{1}{2} \times \frac{3}{8}$
Floors $14 \times \frac{3}{8}$ $14 \times \frac{7}{16}$
Centre Keelson $12 \times \frac{7}{16}$ $12 \times \frac{10}{16}$

Butt straps of deck stringers shenstone & of 2 strakes at big end riveted with straps 1/8 thicker for half length

SCALE $\frac{1}{2}$ INCH TO A FOOT



Lloyd's Register Foundation