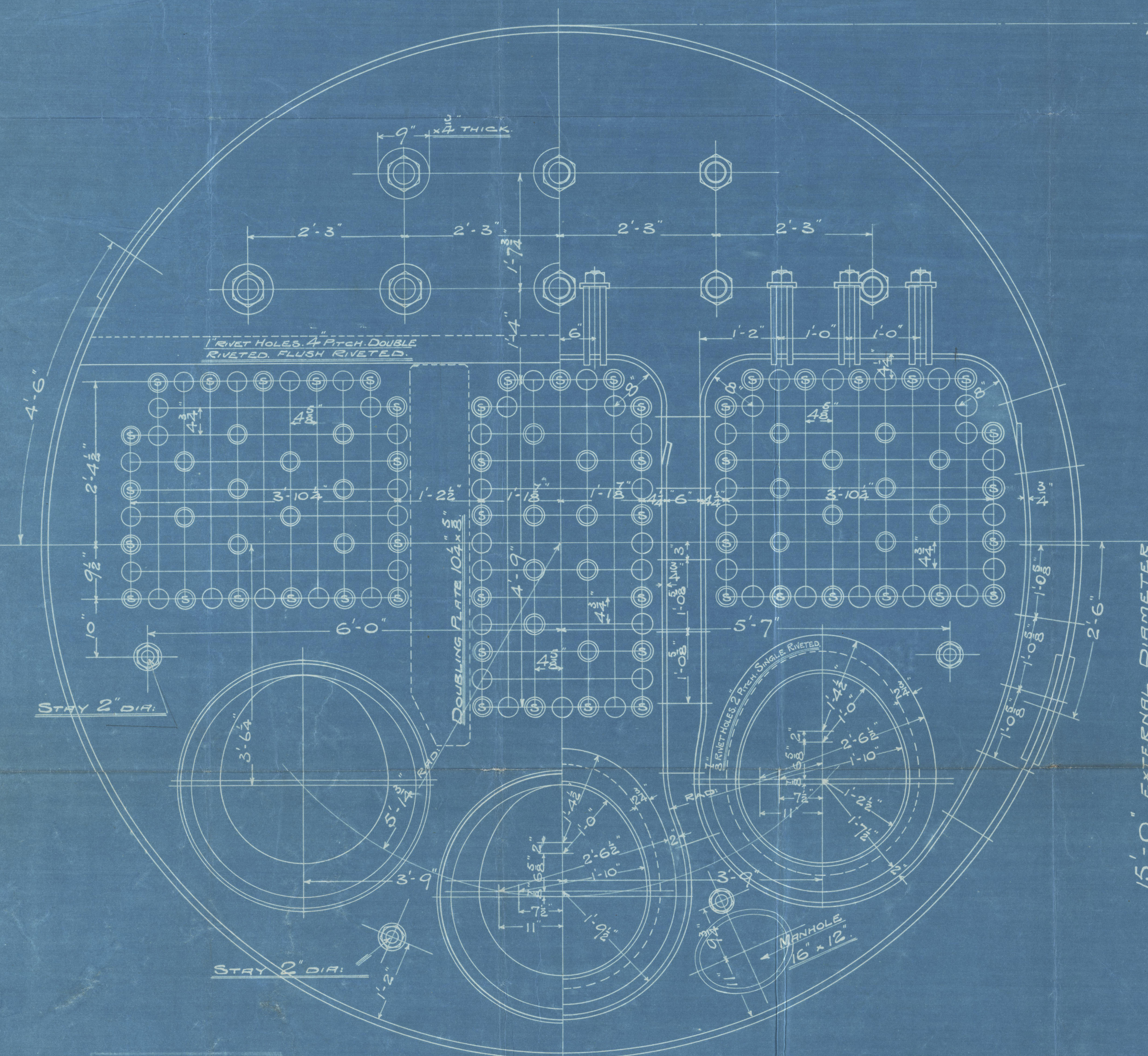


SUNDERLAND ENGINE WORKS

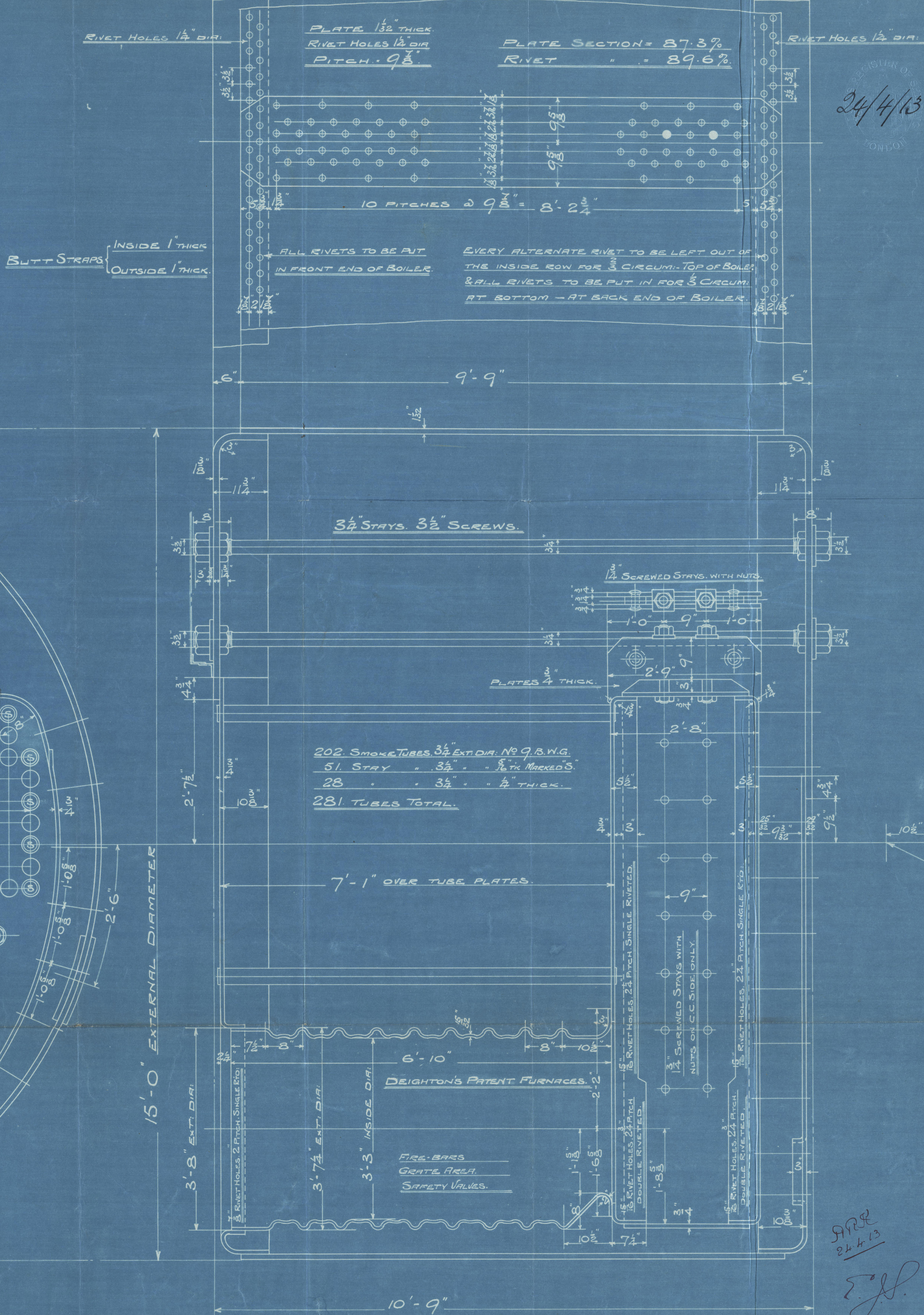
BOILER

DRAWING 4419 SCALE - 1 INCH TO A FOOT SCHEDULE "L"

WRITTEN DIMENSIONS ONLY TO BE TAKEN.



DRAWN BY J.A.S.
CHECKED BY J.A.S.
22.4.1913



TO PASS "LLOYD'S" SURVEY.

SHELL = 22.58 (16.5-2) 87.3	160.6 LBS PER SQ.
WORKING PRESSURE = 160	" " "
TEST " " = 320	" " "
HEATING SURFACE ON TUBES 1695 SQ. FEET.	" " "
" " OTHER PARTS 455	" " "
" " TOTAL 2150	" " "
EX. FRONT TUBE PLATE 2108	" " "
EFFECTIVE AREA OF STAYS	
3 1/2" STAY TUBES 107.9 THREADS PER IN. 2.17 SQ. INCHES.	
3 1/2" " " 9 " " " 1.64 " " "	
3 1/2" MAIN STAYS 6 " " " 8.29 " " "	
2" " " 6 " " " 2.51 " " "	
2" SCREWED " 11 " " " 2.79 " " "	
1 1/2" " " 11 " " " 2.43 " " "	
1 1/2" " " 11 " " " 2.1 " " "	
ALL PLATES RIVETS & STAYS - STEEL	
TUBES - WROUGHT IRON	
HOLES TO BE DRILLED IN PLACE AFTER BENDING	
TENSILE STRENGTH OF SHELL PLATES 28 1/2 TO 32 TONS	
" " GIRDER " 28 " 32 " "	
" " OTHER " 26 " 30 " "	
" " MAIN STAYS 28 " 32 " "	

24/4/13

24.4.13



N.E.M.E.C. LD.
C. N^o 2140.

BOILER 1. OFF

Armeda

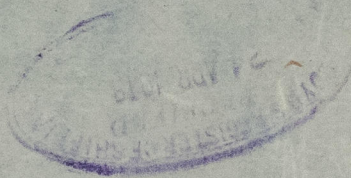
Sld. Rpt. 25711

N^o 3114.

LLOYD'S TEST

320 LBS

305-13 W.B.



ABNSZ-0170



© 2021

Lloyd's Register
Foundation